

Historic, Archive Document

Do not assume content reflects current scientific knowledge, policies, or practices.



Barr's

NURSERY CATALOG

1942

Special Introductory Offers

5 Hemlocks---

(Pennsylvania's State Tree) Strong, bushy plants, 15-18 inches high, a \$5.00 value -----

\$4.00
Postpaid

3 American Holly Trees---

Enjoy their brightening effect during Winter's dreary months. Strong rooted plants, 15-18 inches high, a \$5.25 value -----

\$4.00
Postpaid

Splendid Dogwood Trio---

2 White Flowering and 1 Red Flowering varieties, 3-4 feet high. Will bloom profusely each Spring, a \$6.00 value -----

\$5.00
By Express Prepaid

10 Hardy Chrysanthemums---

Named varieties, your selection from Page 7. Will flower until early Winter, their loveliness you'll especially enjoy, a \$3.00 value -----

\$2.50
Postpaid

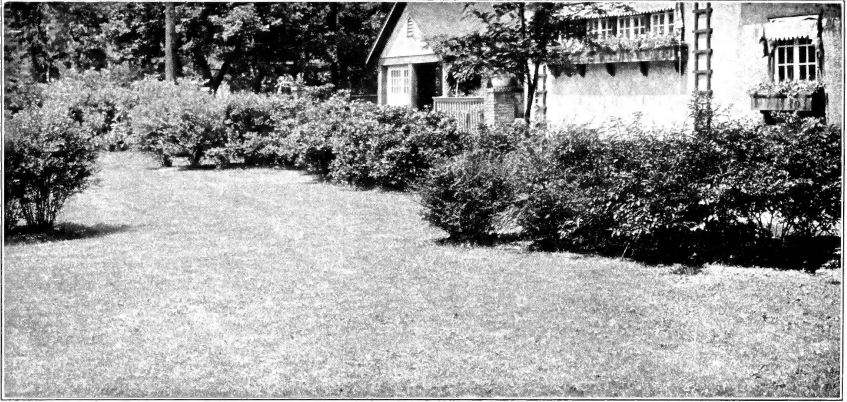
ORDER EARLY

*How, When
Where and
What to Plant*

B. F. Barr Nurseries

Lancaster, Pa

Barr's Grass Seed Makes Fine Lawns



Barr's Lawn Grass Seed Mixtures have been designed primarily to produce a lawn that is at once permanent, quick starting, and a good green color. They are guaranteed to be entirely free of Fall or Crab Grass seed. Re-cleaned by modern machinery, Barr's Lawn Grass Seed Mixtures are free from chaff which makes these mixtures go twice as far. They test especially high in germination, providing a thick stand from the beginning which is essential in holding weeds in check.

One pound of seed will sow 150 sq. ft. of lawn. Keep ground constantly moist until grass is ready to cut, then water heavily at intervals during dry periods.

BARR'S "Sunnyside" Lawn Seed Mixture

This is a combination of the most desirable permanent grasses; dwarf, close growing, fine leaved, producing a good green lawn even in dry weather. As the chief ingredient of a good lawn is superfine Kentucky Blue Grass there is a larger proportion of this ideal grass in this mixture. No Timothy nor Rye nor coarse-bladed annual grasses are used to cheapen this mixture. It will germinate quickly and provide a neat, permanent lawn. Besides the Kentucky Blue Grass other varieties included are fine-leaved perennial grasses and some Chewings Fescue, a higher priced grass that holds weeds in check much better than other varieties.

1 lb., 55c; 5 lbs., \$2.65; 10 lbs., \$5.00; 15 lbs., \$7.25; 25 lbs., \$11.75; 100 lbs., \$45.00; prepaid.

BARR'S Fancy White Dutch Clover

Fancy re-cleaned seed. Excellent for lawns. Mix 2 to 4 ozs. with each pound of above named mixtures if you want Clover on the lawn.

¼ lb., 45c; ½ lb., 80c; 1 lb., \$1.50; 5 lbs., \$6.75.

BARR'S "Green Mantle" Lawn Seed Mixture

This is a splendid mixture of good grasses for average conditions of soil and sunshine. It has a large proportion of Kentucky Blue Grass; also other desirable grasses for a good, quick effect which helps to hold weeds in check. Will give the lawn an enduring velvety, deep green mantle. Very free from weed seeds.

1 lb., 35c; 5 lbs., \$1.50; 10 lbs., \$2.90; 15 lbs., \$4.25; 25 lbs., \$7.00; 100 lbs., \$27.00; prepaid.

BARR'S "Shady Side" Lawn Seed Mixture

Composed of shade loving permanent varieties of fine-leaved grasses—no Timothy nor Ryegrass. Included are fine-leaved perennial grasses, including *Poa trivialis*, which have proven best adapted for situations of a difficult nature due to shade.

Feed lawns under trees heavily three times a year—Spring, early Summer and Fall. Failure under trees is due more to competition of tree roots than shade. Plenty of feed gives both grass and trees a chance to exist. As a fertilizer we recommend Barr's Special Lawn Fertilizer listed on Page 44.

1 lb., 60c; 5 lbs., \$2.85; 10 lbs., \$5.50; 15 lbs., \$8.00; 25 lbs., \$13.00; 100 lbs., \$50.00; prepaid.

QUALITY ROSE PLANTS --- Both Modern And Tested, Standard Kinds --- Our Specialty

Until April 15 Dormant Rose Plants are furnished in both Standard and Patented varieties, parcel post charges paid by us.

On orders for six or more dormant, non-Patented varieties you may deduct 10c per plant if ordered before April 1. This reduction in price cannot apply to Patented varieties on which the price is established by the patentee.

After April 15 Potted Rose Plants will be furnished in both Standard and Patented varieties at prices quoted.

Potted Rose Plants are best sent by express on account of their size and weight, purchaser paying transportation charges only. If desired by parcel post please add 15c per plant. These established, growing plants are guaranteed to reach you in good condition with roots properly protected, and will be ready to bloom within a short time after planting. Potted Plants are a convenience in extending the season for planting Roses successfully through late Spring, Summer and Autumn.

VARIETIES of Roses which have proved most satisfactory for the average planter, considering strength of growth, freedom from disease and insects, abundance of large, beautiful blooms, will be found listed on these pages.

They are the cream of the several thousand varieties known to the flower industry, and include the most indispensable of the time-tested standard varieties and the best of the gorgeous, free-flowering modern varieties.

All Barr's "Will Grow" Roses are heavy, first size, hardy, northern, field-grown, 2 yr. No. 1 plants. They have three or more heavy canes; and were "de-eyed" to prevent wild growth.

They are guaranteed to reach you in perfect condition and to grow and bloom the first season, or will be replaced free. Full planting and cultural directions are furnished with each order.

HYBRID TEA ROSES

(Monthly or Everblooming Varieties)

Alezane. (Pat.) Reddish-brown bud, gradually evolving to apricot. First to bloom in the spring. Dark green foliage; extra hardy. \$1.00 each; 3 for \$2.50.

Ami Quinard. Crimson-maroon with soft, black luster; semi-double, fragrant; very productive. 85c each; 3 for \$2.15.

Better Times. (Pat.) Flowers large, double, deliciously fragrant; brilliant ceise-red; long, strong stems; buds long. \$1.00 each; 3 for \$2.50.

Charles K. Douglas. Bright crimson-scarlet; slightly fragrant. Healthy, active grower. 85c each; 3 for \$2.15.

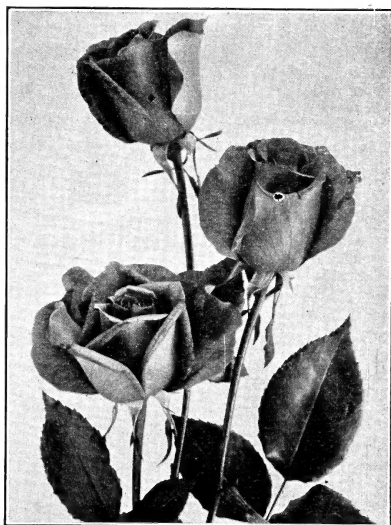
Christopher Stone. Scarlet-crimson, well-sustained; vividly colored new Rose with old-Rose perfume. 85c each; 3 for \$2.15.

Condesa de Sagato. Two toned; coppery red inside, golden yellow outside; delightfully fragrant. Free-blooming, vigorous variety. 85c each; 3 for \$2.15.

Countess Vandal. (Pat.) Lovely coppery pink and golden, extra-long, pointed buds. A continuous "movie" developing new beauty at all times during its long life. \$1.00 each; 3 for \$2.50.

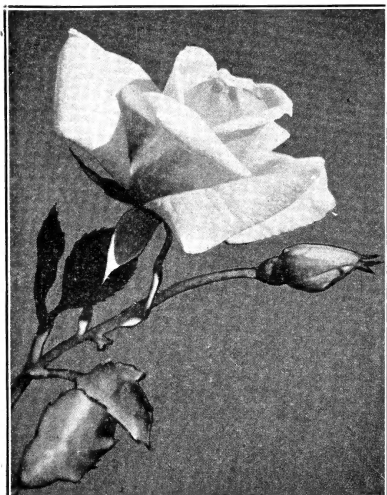
Crimson Glory. (Pat.) Large, urn-shaped buds opening into well-formed flowers of intense deep vivid crimson, shaded oxblood-red; soft, velvety nap. \$1.25 each; 3 for \$3.15.

Dicksons Red. (Pat.) Glowing scarlet-red, rich in fragrance. Very rugged, defying hottest sun's rays. Awarded Gold Medal by National Rose Society of England 1939, and First Award "All-American Rose Selections." \$1.00 each; 3 for \$2.50.



BETTER TIMES (Patented)

Roses Will Help You Get More Enjoyment From Your Home Grounds This Year



COUNTESS VANDAL (Patented)

Eclipse. (Pat.) International sensation; awarded prizes in Rome, Paris, etc. Long stream-lined buds are rich gold without shading. Strong upright plant with healthy dark green foliage. Gold Medal winner. \$1.00 each; 3 for \$2.50.

Edith Nellie Perkins. Long pointed, rich orange-pink buds, opening salmon-pink with golden underglow; very fragrant. 85c each; 3 for \$2.50.

Editor McFarland. Deep pink. Flowers large, on long stems. Vigorous grower. 85c each; 3 for \$2.15.

Etoile de Hollande. Brilliant scarlet, fragrant flowers of large size, a constant joy as it is a continuous bloomer. One of the best reds. 85c each; 3 for \$2.15.

Feu Pernet-Ducher. (Pat.) Bright yellow with edges lightly flushed pink; extra large, fully double, delightfully fragrant. Continuous bloomer; tall, bushy, vigorous grower; robust habit. \$1.00 each; 3 for \$2.50.

Gloaming. (Pat.) Large, urn-shaped buds on long stems. Ideal for cutting. Flowers soft, satiny pink, with underlying shades of orange. Fragrant \$1.00 each; 3 for \$2.50.

Golden Main. (Pat.) Brilliant yellow; continuously in bloom. Strong, dark foliage immune to diseases. \$1.00 each; 3 for \$2.50.

Good News. (Pat.) Glowing coppery-pink, toning to shell-pink on outer petals; large double blooms, richly fragrant. Strong growing, vigorous habit, blooming almost continuously. \$2.00 ea.; 3 for \$5.00.

Joanna Hill. Indian-yellow center surrounded by gold-buff petals; double, long lasting, moderately fragrant. 85c each; 3 for \$2.15.

Kaiserin Auguste Viktoria. Creamy white, large blooms on long stems; fragrant; constant, majestic bloomer. 85c each; 3 for \$2.15.

Margaret McGredy. Brilliant red petals on hinges of deep gold; buds upright; constant bloomer. Resistant to black-spot and mildew. Gold Medal winner. 85c each; 3 for \$2.15.

Matador. (Pat.) Large, full Rose, with the scarlet-crimson sheen of the matador's cape, with darker silky sheen on the reverse; very fragrant. \$1.00 each; 3 for \$2.50.

McGredy's Scarlet. Rich, velvety scarlet with orange base. Fragrant, full, double flowers of good size. Free blooming. 85c each; 3 for \$2.15.

McGredy's Yellow. Bright buttercup-yellow flowers, perfectly formed; undamaged by rains. Strong upright grower. Disease-resistant, glossy, dark bronze foliage. 85c each; 3 for \$2.15.

Miss Rowena Thom. Brilliant satiny pink, old-gold center, large, impressive buds and blooms. 85c each; 3 for \$2.15.

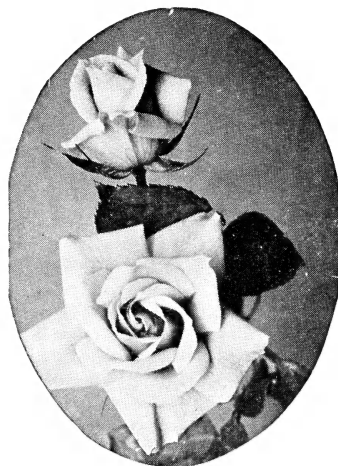
Mme. Cochet-Cochet. (Pat.) Soft salmon-pink with satiny sheen; buds long-pointed, coppery pink, flushed orange; fragrant. \$1.00 each; 3 for \$2.50.

Mme. Jules Bouche. Full, pearly white, camellia-like flower, tinged blush. Most dependable. 85c each; 3 for \$2.15.

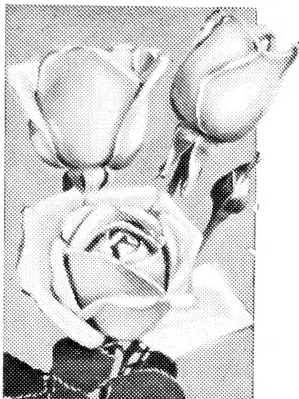
Mrs. Erskine Pembroke Thom. Rich lemon-yellow, full double flower; fine, long buds. Sweet scented. 85c each; 3 for \$2.15.

Mrs. Henry Morse. Two-tone. Petals bright carmine outside, pink with silver shadings inside; large, double, fragrant. 85c each; 3 for \$2.15.

Mrs. Pierre S. du Pont. Most continuous blooming yellow. Buds long pointed, rich reddish gold, almost orange in depths of petals. 85c each; 3 for \$2.15.



JOANNA HILL



RADIANCE

Mrs. Sam McGredy. Glistening scarlet-copper-orange; deep red shadings. Fine form, double; fragrant. Graceful long pointed buds. Disease resistant. 85c each; 3 for \$2.15.

Pink Dawn. Glistening deep rose, opening to lovely pink, tinted orange at base of petals; well-torned; double; fragrant. Vigorous and prolific. 85c each; 3 for \$2.15.

Poinsettia. Glowing, poinsettia-red; long pointed buds; fine for cutting; vigorous grower. Certificate of Merit, American Rose Society. \$1.00 each; 3 for \$2.50.

President Herbert Hoover. Contrasting shades of maroon, orange and gold, continuous bloomer; exquisitely formed buds; strong stems. Three-time medal winner. 85c each; 3 for \$2.15.

President Macia. Rich carmine-pink buds, inside of petals flesh-pink; fragrant. Flowers large on long stems; foliage leathery. \$1.00 each; 3 for \$2.50.

President Plumecocq. Bud coppery yellow; flower large, double, brilliant apricot. Continuous bloomer. 85c each; 3 for \$2.15.

R. M. S. Queen Mary. (Pat.) Rich, glowing salmon blended with an exquisite pure pink; orange base. Glorious combination of vivid shades; delicately perfumed. Awarded 4 Gold Medals and 3 First-Class Certificates in Europe and U. S. A. \$1.00 each; 3 for \$2.50.

Radiance. Beautiful light silvery pink to salmon-pink. A dependable pink; large and fragrant. 85c each; 3 for \$2.15.

Red Radiance. Beautiful deep red form of Radiance. 85c each; 3 for \$2.15.

Rex Anderson. (Pat.) Long-pointed, ivory buds; open rose is cream-white, several on each stem, in rapid succession; delicately fragrant. Handsome, dark green foliage, resistant to diseases. Gold Medal winner. \$1.25 each; 3 for \$3.15.

Rochester. (Pat.) Golden yellow with carmine markings. Foliage disease-resistant; growth vigorous. Always in bloom. \$1.00 each; 3 for \$2.50.

Rome Glory. (Pat.) Large crimson-red buds opening into full, well-formed fragrant cerise-red blooms, long lasting. More winter-hardy than most Hybrid Teas. \$1.25 each; 3 for \$3.15.

Roslyn. Full golden yellow bloom deeper in center with orange splashing on back of petals. Very free bloomer. Lustrous foliage. 85c each; 3 for \$2.15.

Signora. (Pat.) Long bud of a warm burnt sienna with yellow base in brilliant contrast; double and fragrant. Prolific. \$1.00 each; 3 for \$2.50.

Sister Therese. Golden yellow, exquisite, long-pointed buds touched with orange-carmine. Vigorous, fine bloomer. 85c each; 3 for \$2.15.

Souvenir de Claudius Pernet. Beautiful, pure sunflower-yellow, deeper in center; extraordinary yellow Rose. 85c each; 3 for \$2.15.

Souvenir de Mme. C. Chambard. Flashy deep rose-pink with golden glow at center; large; semi-double; fragrant. Vigorous, upright grower. 85c each; 3 for \$2.15.

Sterling. (Pat.) Bright pink, splendidly formed, delightfully fragrant. Fine for cutting. \$1.00 each; 3 for \$2.50.

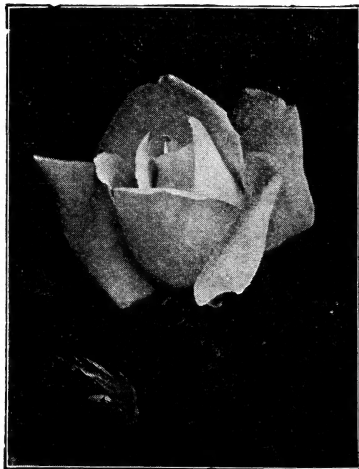
Talisman. Brilliant orange-red buds, opening a glowing golden yellow, tinted copper-red and orange-rose; large and fragrant. 85c each; 3 for \$2.15.

Texas Centennial. (Pat.) Blood-red toning to cerise-red in center. A most striking red of unusual color. Unusually vigorous. \$1.00 each; 3 for \$2.50.

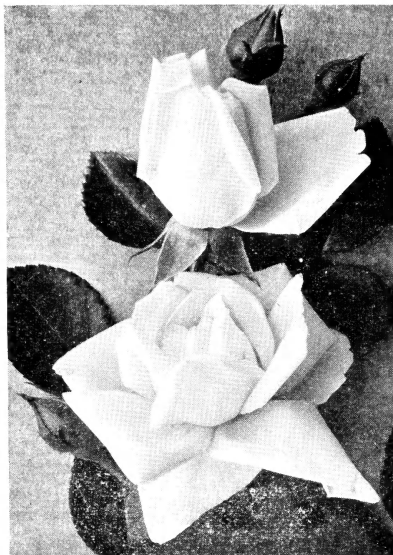
Ville de Paris. Buds of buttercup-yellow opening into fadeless, double flowers of Radiance type. 85c each; 3 for \$2.15.

White Briarcliff. (Pat.) An absolutely pure white Hybrid Tea Rose. Vigorous, bushy plant. \$1.00 each; 3 for \$2.50.

Willowmere. Long coral-red buds, developing into large flowers of rich shrimp pink, shaded yellow in the center. 85c each; 3 for \$2.15.



WHITE BRIARCLIFF (Patented)



CLIMBING ROSE NEW DAWN

HARDY CLIMBING ROSES

Useful for covering porches, trellises, arbors, fences, walls and banks, making a superb display of bloom. Prune after flowering.

American Pillar. Immense clusters of single bright crimson flowers, with white eye. 85c each; 3 for \$2.15.

Blaze. (Pat.) Scarlet-red flowers in great profusion; the everblooming Paul's Scarlet. \$1.00 each; 3 for \$2.50.

Climbing American Beauty. Rich carmine flowers, 3 to 4 inches across, in abundance. \$1.00 each; 3 for \$2.50.

Doublons. (Pat.) Clusters of large, cup-formed, saffron-yellow blooms, opening one after the other, thus prolonging the season. \$1.00 each; 3 for \$2.50.

Dr. W. Van Fleet. Long-pointed, deep pink buds opening a lighter shade of pink; large and fragrant. 75c each, 3 for \$1.90.

Golden Climber. (Pat.) Golden yellow, Hybrid Tea type flower on long stems; buds pure golden yellow flecked with orange-scarlet. Glossy green foliage. Recurrent blooms throughout season. \$1.00 each; 3 for \$2.50.

Jacotte. Coppery yellow, tinted coppery red; flowers large, semi-double. 85c each; 3 for \$2.15.

Mary Wallace. Brilliant, warm pink; large and charming; early. 85c each; 3 for \$2.15.

Mme. Gregoire Staechelin. Long-pointed crimson buds, showing iridescent pearl-pink inside as they open; perfumed. \$1.00 each; 3 for \$2.50.

New Dawn. (Pat.) The everblooming Dr. W. Van Fleet with which it is identical except that it blooms throughout the Summer and Fall. \$1.50 each; 3 for \$3.75.

Paul's Scarlet Climber. Vivid scarlet, shaded crimson; semi-double flowers in clusters borne in profusion. 75c each; 3 for \$1.90.

POLYANTHA or "BABY" ROSES

Constant abundance of clusters of small, perfectly formed flowers. Make ideal bedding plants, their heights seldom exceeding 15 to 20 inches.

Else Poulsen. Bright rose-pink, semi-double, medium-size flowers in large, branching clusters. Fine for everblooming hedge.

Gloria Mundi. Brilliant orange-scarlet, double flowers, in huge clusters. Showy edging and bedding Rose.

Golden Salmon. Large clusters of striking reddish-orange buds and blooms of most amazing bright, blazing orange color.

Any of above Polyantha Roses, 85c each, 3 for \$2.15.

REDUCED PRICES ON ROSES OF YOUR SELECTION

Make Up Your Own Combination by Using Any 3 or More Similarly Priced Varieties at Proportional Savings.

Any 3 — \$0.75 Roses	-----	\$1.90
Any 3 — .85 Roses	-----	2.15
Any 3 — 1.00 Roses	-----	2.50
Any 3 — 1.25 Roses	-----	3.15
Any 3 — 1.50 Roses	-----	3.75
Any 3 — 2.00 Roses	-----	5.00



PAUL'S SCARLET CLIMBER

Certified Plants as Furnished by Barr's Insure Vigorous Healthy Growth

Gorgeous Flowers Until Frost With Hardy "Mums"

In late Fall when nearly all other flowers have ceased to bloom the hardy, garden Chrysanthemums, or Winter Shrubs, as they are sometimes called, are still here to delight with their great variety of form and color.

Strong plants from pots for easy and most successful transplanting, ready for delivery May 1.

AZALEA Flowering MUMS

Chrysanthe-

These prolific-blooming, hardy Chrysanthemums have become very popular in the last few years. Each plant is literally covered with blooms in the Fall, estimates running as high as 600 flowers the first year.

They bloom from late July until frost, forming wide, dense "cushions" 1½ ft. high by two to three feet across when fully developed. Good for Rock Gardens.

Bronze Cushion. Deep bronze, turning bronzy yellow.

Pink Cushion. Beautiful shade of bright pink.

Queen Cushion. White.

Yellow Cushion. Brilliant golden-yellow.

PRICES: Any of above Cushion Chrysanthemums, 30c ea.; 3 for 75c.

COMPLETE SET OF FOUR CUSHION MUMS \$1.00.

LOVELY SPOON MUMS

A charming and most interesting new type. Petals are tubular for most of their length, but flatten out near the tip like miniature spoons.

Pink Spoon. Large, semi-double, light rose or shell pink.

White Spoon. Double, white flowers with creamy center.

Yellow Spoon. Very lovely double flowers of brilliant yellow color.

PRICES: Any of above Spoon Mums, 40c ea.; 3 for \$1.00.

KOREAN CHRYSANTHEMUMS

These exquisite, new hardy, creations with their lovely pastel shades compare with the Gerbera in daintiness and richness. Will bloom until frost, making wonderful late color effects in the garden. Excel in hardness, profuseness of bloom and ease of growth. 2-2½ ft. high.

Astrid. Lovely shell-pink warmed with old rose tints; bright yellow center. Single, daisy-like flowers three inches or more across. Dwarf habit.

King Midas. Charming soft yellow, occasionally tinted with bronze; full double flowers up to 4 inches across. Late September through October. Decorative.

Mandarin. Coral-salmon, copper and bronzy gold blending in a delightful combination. Flowers 2 in. across. 45c ea.; 3 for \$1.20.

Saladin. Oriental red, shading to coral-red with coppery tones on reverse; 3-inch flowers with four rays of petals; delightfully fragrant.

Symphony. Mauve-rose overcast with soft coppery-rose having the sheen of damask silk. Fascinating, double flowers 3 inches across.

PRICES: Any of above varieties except where noted, 30c each; 3 for 85c.

LARGE FLOWERING VARIETIES

Largest, most showy of the late Fall flowers, the ball-like bloom being 3-4 inches across. Should be planted in a protected location in good soil. For larger flowers allow only one bud to a plant. In full bloom by mid-October.

Mrs. H. E. Kidder. Elegant large yellow; petals incurved.

Oconto. Pure white, with incurved petals.

Rose Glory. Lavender-pink; petals incurved.

PRICES: Any Large Flowering Mums 35c ea.; 3 for \$1.00.

CHOICEST GARDEN MUMS

Barbara Cumming. Clear yellow, shading to orange-bronze toward the center; large, full flowers. August-November.

Early Bronze. Lively, double bronze-yellow; dwarf. August-October.

Gypsy Girl. Crimson shading to chestnut; single; dwarf. September-November.

Indian Summer. Glowing orange flowers 3 inches across; double. Erect and free flowering.

Judith Anderson. Clear buttercup-yellow flowers, nicely rounded 1½ inches across, completely covering the plant. October.

Louisa Schling. Salmon-red, single flowers attractively suffused with red; free flowering.

Minnau. Large, very double, white flowers. Button type. Compact plant.

Modesty. Lilac-rose. Large flowers with unique narrow petals. September.

Murillo. Best shade of pink among the hardy Chrysanthemums.

Pomponette. Becomes covered with a mass of golden flowers tinted gently with a bronze overcast. 1½ ft. Pompon.

Rose Glow. Lovely old-rose becoming opalescent rose. Semi-double flowers 2 inches across in great profusion, delightfully cinnamon scented. Magnificent. 45c each; 3 for \$1.10.

Ruth Cumming. Rich bronze terra-cotta. October.

Ruth Marion Hatton. Bright canary-yellow. Decorative Pompon type. September.

Skibo. Bronze changing to rich yellow, retaining a small, bronze center. Plant is covered with flowers 1 inch across. Pompon type.

Snappy. Red with golden reverse; semi-double. October.

Tasiva. Lovely, large, free-flowering, pure white, early; dwarf.

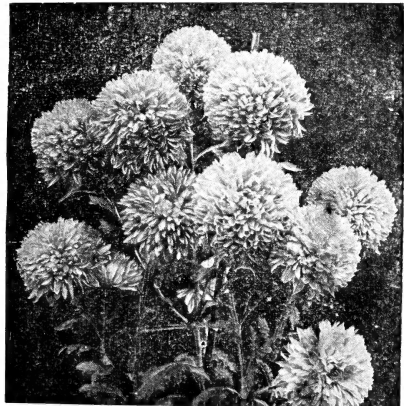
The Moor. Port-wine red flowers, 3 inches across and double, making intensely brilliant garden display. Late September.

PRICES: Any of above varieties, except where noted, 30c ea.; 3 for 75c.

RUBELLUM HYBRID MUM

C. Clara Curtis PINK SEPTEMBER DAISY Single, deep rose-pink, daisy-like flowers about 3 inches in diameter on reddish branching stems September; Bushy habit. 40c ea.; 3 for \$1.00.

(Perennials continued on Page 37)



POMPON CHRYSANTHEMUMS

Above Hardy Chrysanthemums Will Be Sent Postpaid

Barr's Evergreen Trees And Shrubs Give Beauty And Pleasure The Year 'Round

NO other plants offer so much in value as Evergreens giving as they do enjoyment twelve months the year 'round. Then, too, they can be used in so many interesting ways and make a lasting improvement to any property.

On the following pages there is a choice of Evergreens for every purpose—for foundation planting, for single or massed plantings on the open lawn, for lining walks, or for hedges.

How To Use Evergreens

When considering Evergreens for a planting visualize first what shape the plant should have for that particular location, keeping in mind, too, the ultimate height. Following the botanical name of each variety listed on the following pages we show its ultimate height for your guidance in selection.

The smaller members of the pyramidal group such as Redcedars, Arborvitae, etc., are used as accents at the corners of the house, beside the doorway, at the corners of a formal garden, and similar places. The round or globe-shaped plants such as Globe Arborvitae, Mugho Pine, etc., find best use in the formal garden and at each side of steps, but never

in groups. The spreading types, like Pfitzer Juniper, Spreading Yew, etc. are valued for foundation planting and general use. These types group together well, harmonize with deciduous shrubs, and soften the severe lines of the more pyramidal forms. The creeping types like Sargent Juniper, Spreading Juniper, etc. may be used in the rock garden, for covering small slopes and in the foreground of foundation plantings.

Don't Crowd Large-Growing Types

An error to be avoided in the use of Evergreens is to put large-growing types like Spruce, Pines, and Firs in front of porches. In a short time they will become crowded and grow out of bounds, requiring replacement which multiplies the cost of the planting unjustifiably.

B. & B. INCLUDED IN PRICES

All prices on Evergreens include digging with a ball of earth, (B.&B.). Packing is also included on plants up to 4 ft. in size, but for larger Evergreens to be packed for shipment add 25c per ft. of height to cover cost of packing materials and labor.

PLANT FIRS AS EFFECTIVE TALL SPECIMENS

Handsome, compact, large, rapid-growing, broad, pyramidal trees of symmetrical outline, useful in larger plantings and as lawn specimens where a tall, stately, outstanding conifer is desired. Lower branches retained many years.

ABIES concolor, 60-75 ft.

White Fir

Leaves flat, long and of soft, silvery hue, usually curved; lemon scented. Very hardy.

2-2½ ft. -----	\$ 2.00	3-4 ft. -----	\$ 3.00
2½-3 ft. -----	2.50	4-5 ft. -----	4.00

A. nordmanniana, 75-90 ft.

Nordman Fir

Flat, blunt needles, shining dark green above, silvery beneath. Rigid, horizontal branches.

6-8 ft. -----	\$15.00	8-10 ft. -----	\$20.00
---------------	---------	----------------	---------

Douglas Fir

Medium-conical form and rapid growing. Foliage dark bluish-green, flat, long persisting. One of the best tall-growing evergreens. Use as specimen plant or in screens. The needles of the Douglas Fir resemble those of the Spruce but are usually longer. Thrives in almost any soil and withstands both moisture and drought. Valued for its symmetrical, compact outline and persistence of lower branches.

PSEUDOTSUGA douglasi, 70-80 ft.

Douglas Fir

1½-2 ft. -----	\$ 1.25	4-5 ft. -----	\$ 5.00
2-2½ ft. -----	1.75	6-7 ft. -----	9.00
2½-3 ft. -----	2.25	10-12 ft. -----	30.00
3-4 ft. -----	3.50	12-14 ft. -----	35.00



DOUGLAS FIR

On Evergreens Over 4 ft. Add 25c per ft. to Cover Cost of Crating

Use Retinosporas For Graceful, Soft Effects

The graceful habit and the soft, fine foliage of the Retinosporas make them favorite Evergreens. These refined Evergreens attain unusual beauty. Recommended for foundation planting and as lawn specimens in sunny locations. Prefer moist soil.

CHAMAECYPARIS lawsoniana, 8-10 ft. **(Cupressus) Lawson Cypress**

Formal, pyramidal type; silvery-blue foliage contrasting effectively in groups of large Evergreens.
1½-2 ft. ----- \$ 1.50

C. obtusa nana, 4-5 ft. Dwarf Hinoki Cypress

Exquisite, low Evergreen with short, curiously twisted, graceful, dark green branchlets; narrow, irregular pyramid. Useful in rock gardens and low foundation plantings.

15-18 in. ----- \$ 4.00 1½-2 ft. ----- \$ 5.00

C. plumosa, 20-30 ft. Plume Retinospora

Pyramidal; dense foliage, soft and plume-like; rich green; handsome and distinctive.

15-18 in. ----- \$ 1.00 1½-2 ft. ----- \$ 1.50
2-2½ ft. ----- \$ 2.40

C. pl. argentea, 3-4 ft. Silvertip Retinospora

Dwarf; branches silver tipped; almost ball shaped. Useful in foundation plantings.

12-15 in. ----- \$ 1.00 2-3 ft. ----- \$ 3.00

C. pl. aurea, 20-30 ft. **Golden Plume Retinospora**

Tall, pyramidal; bright golden foliage, soft and plummy. Valuable for contrast.

15-18 in. ----- \$ 1.00 1½-2 ft. ----- \$ 1.50
2-2½ ft. ----- \$ 2.40



PLUME RETINOSPORA

C. pl. lutescens, 2½-3 ft. **Dwarf Yellowplume Retinospora**

Broad, dense bush with bright green, plummy foliage, tipped golden.

2-2½ ft. ----- \$ 2.75 2½-3 ft. ----- \$ 3.60

When To Plant All Kinds of Nursery Stock

Coniferous and Broad-leaved Evergreens

Evergreens transplant best during the Spring months, before and just as new growth is beginning, or for several months following August 1 when the new growth is completed and has become sufficiently hardened. (March 15 to June 15, and August 1 to December 20.)

Deciduous Trees, Shrubs and Vines

From the time the ground opens in the Spring until the plant starts growth, and again from the time the wood is ripened and the leaves begin to fall in the Autumn until the ground is frozen. (March 10 to June 1 and October 1 to December 20.)

After June 1 planting of Trees and Shrubs can still be continued if Balled and Burlapped plants are used. For this there is an extra charge of 20c each for Shrubs. Cost of Baling and Burlapping of Trees depends on size as per schedule given on Page 23. Where B. & B. is stated there is no extra charge.

Large trees are moved with safety during the entire Winter.

Grass Seed

Spring or Autumn. (March 10 to May 20, and August 1 to October 10.)

Perennials

Spring or Autumn. (April 1 to June 1, and September 1 to November 30.)

Allow reasonable time for filling orders received during the shipping season, as orders are filled in rotation.

ORDER EARLY

EXPERT GARDEN SERVICE AVAILABLE TO YOU

Our skilled men are available to do your pruning and spraying and other garden service in season. Often they are called long distances for Rock Garden Construction, Landscape Operations, Big Tree Moving, Tree-Surgery, Spraying, etc.

Junipers Worthily Fill Almost Every Planting Need



SILVER REDCEDAR
JUNIPERS

Junipers are valuable ornamental plants that thrive best in moist soils and sunny, open positions. The tall, columnar forms are used as accent plants; the low, bushy forms for foundations and massing; the prostrate forms for covering slopes, or in the rock garden, or in the foreground of foundation plantings. A very hardy class.

JUNIPERUS ch. pfitzeriana, 5-6 ft.

Pfitzer Juniper

Wide growing; plumose, graceful horizontally spreading branches; foliage blue-green.

12-15 in. spr. --\$ 1.00 1½-2 ft. spr. --\$ 2.25
15-18 in. spr. --\$ 1.75 2-2½ ft. spr. --\$ 3.00
3-4 ft. -----\$ 5.00

J. ch. sargentii, 1-2 ft. **Sargent Juniper**

Prostrate habit; grass green winter and summer. Good in rock gardens.

1½-2 ft. spr. --\$ 3.00 2-2½ ft. spr. --\$ 4.00

J. ch. smithii, 6-8 ft. **Smith Chinese Juniper**

Graceful, bushy form; foliage light green, remaining fresh and bright Summer and Winter.

2-2½ ft. -----\$ 2.50 2½-3 ft. -----\$ 3.00
3-4 ft. -----\$ 3.50

J. ch. sphaerica (fortunei), 10-12 ft.

Fortune Juniper

Densely branched, broadly pyramidal, rounded form with gray-green foliage. Useful in mixed plantings where it is quite distinctive.

2½-3 ft. -----\$ 3.00

J. communis depressa plumosa, 1 ft.

Purple Spreading Juniper

Spreading habit; foliage tinged with rich purple during fall and winter.

15-18 in. spr. --\$ 2.00 1½-2 ft. spr. --\$ 2.50
2-2½ ft. spr. -----\$ 3.50

J. com. hibernica, 6-8 ft.

Irish Juniper

Slender, columnar form; foliage silvery-gray on dense, upright branches. Its narrow form makes interesting contrast with other Evergreens.

1½-2 ft. -----\$ 1.50

J. excelsa stricta, 6-8 ft.

Spiny Creek Juniper

Slow, compact grower; glaucous, blue color; narrow, pyramidal form.

12-15 in. -----\$ 1.00 1½-2 ft. -----\$ 1.75

J. squamata meyeri, 3-4 ft.

Meyer Juniper

Shining blue color, tinted pink; dwarf, bushy habit; very attractive, unusual Evergreen that adds interest to any planting.

2-2½ ft. -----\$ 3.00

J. virginiana burkii, 8-10 ft.

Burks Juniper

Dense, columnar form; distinctive blue color in summer, plum-colored winter.

2-2½ ft. -----\$ 2.50 2½-3 ft. -----\$ 3.50

J. v. cannarti, 12-15 ft.

Cannart Redcedar

Compact columnar habit; rich dark green foliage. Its blue berries in autumn give it a distinct ornamental advantage.

2-2½ ft. -----\$ 2.50 3-4 ft. -----\$ 5.00
2½-3 ft. -----\$ 3.75 4-5 ft. -----\$ 6.25
7-8 ft. -----\$ 10.00

J. v. glauca, 12-15 ft.

Silver Redcedar

Columnar, vigorous grower; silvery blue, changing to bluish-grey. Good as a color accent among other Evergreens.

2-2½ ft. -----\$ 2.50 3-4 ft. -----\$ 5.00
2½-3 ft. -----\$ 3.75 4-5 ft. -----\$ 6.25
5-6 ft. -----\$ 7.50

J. v. keteleeri, 12-15 ft.

Keteleer Redcedar

Refined, symmetrical, compact pyramidal growth; intense green. In autumn bears large, showy slate-blue berries of considerable decorative value. Not susceptible to cedar apple rust.

2-2½ ft. -----\$ 2.50 3-4 ft. -----\$ 5.00
2½-3 ft. -----\$ 3.75 7-8 ft. -----\$ 10.00

A large ball of Lancaster County's famous fertile soil goes with each "Will Grow" Evergreen which helps it in getting off to a good start and making continued satisfactory growth.

Because we ball and burlap and prepare "Will Grow" Evergreens for shipment by freight our customers have the advantage of this more economical method of delivery.

Evergreens Should Be Kept Thoroughly Watered to Obtain Best Growth

Spruces Are Most Effective on the Open Lawn

SPRUCES

Spruces are valued especially for specimen planting either singly, or in groups on large lawns; too large growing for foundation planting. These magnificent trees do best in suburban sections. The stately, regular, pyramidal outline of these hardy trees is strikingly effective.

PICEA barri, 40-50 ft. **Barr Spruce**

Slow growing, dense, pyramidal Evergreen with glossy, dark green needles.

3-4 ft. ----- \$ 4.00 4-5 ft. ----- \$ 5.00

P. c. albertiana, 40-50 ft. **Black Hills Spruce**

Conical, symmetrical outline; bluish-green; compact and hardy; drought resisting.

2-3 ft. ----- \$ 2.50 4-5 ft. ----- \$ 4.00
3-4 ft. ----- 3.00 6-8 ft. ----- 8.50

P. excelsa, 60-80 ft. **Norway Spruce**

Fast growing; dark green; valuable for screens and hedges. When older makes a fine silhouette against the sky.

15-18 in. ----- \$ 1.00 4-5 ft. ----- \$ 4.00
1½-2 ft. ----- 1.25 5-6 ft. ----- 6.00
2-3 ft. ----- 1.75 6-7 ft. ----- 8.50
3-4 ft. ----- 2.50 12-14 ft. ----- 15.00

Finest of The Green Spruces

P. orientalis, 50-70 ft. **Oriental Spruce**

Its classic outline and small, neat, glossy green needles closely clothing the branches make this a plant of uncommon beauty. One of the most beautiful of all spruces.

1½-2 ft. ----- \$ 2.50 3-4 ft. ----- \$ 4.50
2-2½ ft. ----- 3.00 4-5 ft. ----- 6.00
2½-3 ft. ----- 3.50 5-6 ft. ----- 7.00

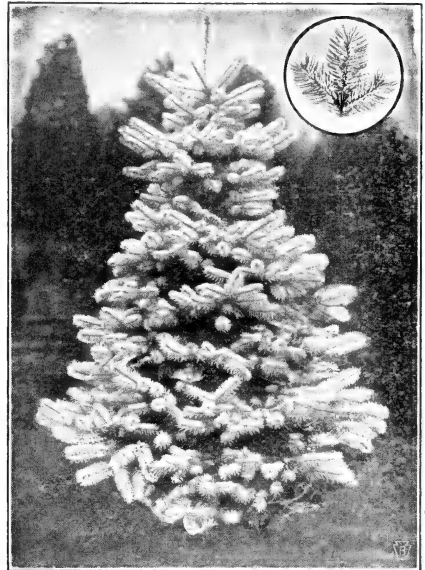
PLANT BY PLAN — GET BETTER RESULTS FOR YOUR MONEY

A plan, based on skilled selection and arrangement, will transform \$25.00 worth of plants into a \$100.00 effect; while \$100.00 worth of plants, ordinarily selected and arranged, are merely a maintenance liability and generally unsatisfactory.

A good plan, therefore, greatly increases the value of the garden and the plants included.

If it is worth planting, it is worth the most skilled planning and suggestions available.

Ask us about our Free Landscape Planning Service.



MOORHEIM BLUE SPRUCE

P. pungens, 60-80 ft. **Colorado Spruce**

Foliage light-green. Withstands heat and drought. Striking in appearance due to its perfect pyramidal outline and horizontally spreading branches.

1½-2 ft. ----- \$ 1.50 2½-3 ft. ----- \$ 2.50
2-2½ ft. ----- 2.00 3-4 ft. ----- 3.00
4-5 ft. ----- \$ 4.50

P. p. glauca, 60-80 ft. **Blue Colorado Spruce**

Like above, except for a slight bluish tinge.

2-2½ ft. ----- \$ 3.50 3-4 ft. ----- \$ 6.00
2½-3 ft. ----- 4.00 4-5 ft. ----- 8.00
6-8 ft. ----- \$14.00

P. p. kosteri, 60-80 ft. **Koster Blue Spruce**

Beautiful silvery-blue, broad, symmetrical tree making a striking appearance as a specimen on the lawn, or planted in groups. Very hardy.

1½-2 ft. ----- \$ 4.00 4-5 ft. ----- \$10.00
2½-3 ft. ----- 6.00 5-6 ft. ----- 16.00
3-4 ft. ----- 7.00 6-7 ft. ----- 20.00

Most Intensely Blue Spruce

P. p. moorheimi, 60-80 ft.

Moorheim Blue Spruce

More intensely blue than Koster Blue Spruce, and with larger needles making a glorious effect in color and form.

1½-2 ft. ----- \$ 4.00 3-4 ft. ----- \$ 8.00
2-2½ ft. ----- 5.50 4-5 ft. ----- 11.00
2½-3 ft. ----- 6.50 5-6 ft. ----- 17.50



AUSTRIAN PINE

PINES

The Pines with their spreading branches bearing clusters of long, needle-shaped leaves, make valuable, majestic evergreens for permanent planting. They endure a wide range of soil and climate, and as they grow older gain in picturesqueness.

***Pinus montana mughus*, 4-5 ft. Mugho Pine**

Dwarf; many stems spreading outward and upward; erect new growth resembling candles. A low, compact plant, almost globular in outline. Suitable for foundation plantings, or in groups.
 10-12 in. wide -- \$ 1.50 15-18 in. wide -- \$ 3.00
 12-15 in. wide -- 2.00 1½-2 ft. wide -- 4.00

***P. nigra*, 60-80 ft. Austrian Pine**

Heavily plumed, with long, rich, glossy, dark green, rigid needles. Will thrive in poor soil, or damp situations. Good for specimen, or mass planting; also for windbreaks.
 2-3 ft. ----- \$ 3.00 10-12 ft. ----- \$22.50
 4-5 ft. ----- 7.00 12-14 ft. ----- 25.00
 14-18 ft. ----- \$30.00

***P. resinosa*, 50-60 ft. Red Pine**

Spreading, somewhat pendulous branches; dark green leaves. Good in massed background planting or as a specimen.
 1½-2 ft. ----- \$ 1.75 4-5 ft. ----- \$ 4.00
 3 -4 ft. ----- 3.50 5-6 ft. ----- 7.00
 12-15 ft. ----- \$25.00

***P. strobus*, 60-80 ft. White Pine**

A tall, straight, fast-growing, hardy tree with long, flexible, light-green needles. Very graceful. Good as specimen or in groups.
 1½-2 ft. ----- \$ 1.75 3-4 ft. ----- \$ 3.00
 8-10 ft. ----- \$17.50

***P. s. glauca*, 60-80 ft. Blue White Pine**

Plume-like, soft, blue-green foliage; extremely picturesque. Columnar in growth.
 3-4 ft. ----- \$ 3.75 4-5 ft. ----- \$ 4.50

***P. sylvestris*, 25-35 ft. Scotch Pine**

Fast growing, open, round-headed, picturesque tree; twisted needles with bluish-green hue. Resists smoky, city conditions.
 2-3 ft. ----- \$ 2.00 3-4 ft. ----- \$ 3.75
 4-5 ft. ----- \$ 5.00

YOU GET BEAUTY AND VIGOR IN "WILL GROW" EVERGREENS

Barr's "Will Grow" Evergreens have a character all their own, due to our system of shaping, root-pruning and frequent transplanting, which results not only in a close, beautiful, compact growth so desirable in Evergreens, but aids in quick recovery after transplanting.

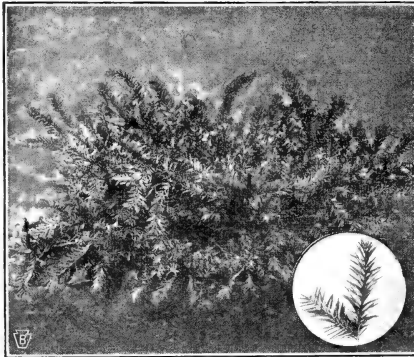
Being hand-dug when your order is received all roots are carefully secured. Taken fresh from the ground is assurance that your Evergreens will have their full vitality and that you can count on them giving you the most satisfactory results.



WHITE PINE

All Barr's "Will Grow" Evergreens Have Vigor and Beauty Grown Into Them

Yews Unexcelled In Either Sunny or Shady Places



SPREADING ENGLISH YEW

YEWS

Adaptability to part shade, semi-dwarf habit, handsome, dark green foliage winter and summer, give the Yews their high value as Evergreens for foundation and other ornamental planting. Best evergreen family for difficult city conditions and foundation planting. Any planting can be greatly enriched by a liberal use of Yews. Many of the Yews produce a profusion of red berries during the Fall.

TAXUS baccata repandens, 4-5 ft.

Spreading English Yew

Low, gracefully spreading habit; long, glossy, blue-green foliage. Ideal as a low plant to face off groups. Thrives in shade.

15-18 in. spr. ----- \$ 4.00

T. cuspidata, 8-12 ft.

Common Spreading Yew

Most vigorous of the Yews; very hardy; dark, green foliage; excellent for foundation planting or hedges. Has a pleasing informal spreading habit. Lends itself well for group planting.

12-15 in. wide ..\$ 1.50	2½-3 ft. wide ..\$ 7.50
15-18 in. wide .. 2.25	3-3½ ft. wide .. 10.00
1½-2 ft. wide .. 3.75	3½-4 ft. wide .. 12.50
2-2½ ft. wide .. 5.00	4 -5 ft. wide .. 15.00

T. c. capitata, 15-20 ft.

Upright Yew

Symmetrical, upright and compact grower; foliage dark green; fruit, bright scarlet. Very hardy; invaluable for foundation planting; excellent in masses. Makes a rich hedge.

12-15 in. -----\$ 1.50	2½-3 ft. -----\$ 5.50
1½-2 ft. ----- 3.50	3-3½ ft. ----- 7.00
2-2½ ft. ----- 4.50	3½-4 ft. ----- 9.00
4-5 ft. ----- \$12.50	

Yews Are the Most Satisfactory of All Evergreens. A Complete Planting Can Be Made of Them Alone.

T. c. nana (brevifolia), 3-4 ft. Dwarf Yew

Very handsome, slow growing, low, compact Evergreen, with short, rich, dark green needles. Splendid for foundation plantings. Unexcelled for permanence.

10-12 in. wide ..\$ 1.50	18-21 in. wide ..\$ 5.00
12-15 in. wide .. 3.00	21-24 in. wide .. 6.00
15-18 in. wide .. 4.00	2-2½ ft. wide .. 7.00
	2½-3 ft. wide ---\$ 8.50

T. media hatfieldi, 6-8 ft. Hatfield Yew

Compact, conical form, with upright branches, center full; very beautiful, hardy variety; rich black-green, darkest of all Yews.

15-18 in. -----\$ 3.50	1½-2 ft. ----- \$ 4.00
	2-2½ ft. ----- \$ 6.00

T. m. hicksi, 8-12 ft.

Hicks Yew

Upright, narrow, conical form; dense, dark green foliage. Effective accent plant. Very attractive in Fall for its profusion of red berries.

1½-2 ft. -----\$ 3.50	2½-3 ft. -----\$ 6.50
2-2½ ft. ----- 5.00	3 -4 ft. ----- 9.00
	4-5 ft. ----- \$12.50



UPRIGHT YEW

"Will Grow" Yews Are Quality Plants at Prices You Can Afford for Better Results

Arborvitae---Popular Evergreens At A Low Cost

ARBORVITAE

The clean, neat, compact appearance and soft foliage of the Arborvitae make them appropriate for foundation planting where they are almost indispensable, and for planting on small lawns as well as large areas. The Arborvitae are hardy and easy to transplant, but prefer moist soils. They offer a wide range of possibilities.

THUJA occidentalis, 15-25 ft.

American Arborvitae

Broad, conical tree; foliage bright green. Good for screens and hedges and accent purposes in evergreen plantings.

1½-2 ft. -----	\$ 1.25	4-5 ft. -----	\$ 4.00
2-2½ ft. -----	1.50	5-6 ft. -----	5.50
2½-3 ft. -----	2.00	10-12 ft. -----	11.00
3-4 ft. -----	2.75	12-14 ft. -----	12.50

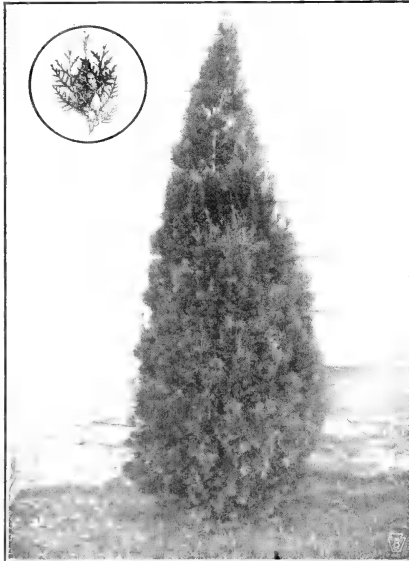
T. oc. elegantissima, 15-20 ft.

Lee Golden Arborvitae

Compact, pyramidal plant; golden green foliage; hardy and vigorous in growth. Its bright color will enliven any evergreen planting.

1½-2 ft. -----	\$ 1.50
----------------	---------

Arborvitae Are Widely Used for Economical Foundation Plantings, Open Lawn Specimens, or Evergreen Hedges.



PYRAMIDAL ARBORVITAE

T. oc. globosa, 3-4 ft.

American Globe Arborvitae

Grows naturally in ball-like form; light green foliage. Very hardy. Use as a low type for variety in foundation plantings, or as accent plant for colonial type house on each side of entrance step. 12-15 in. ----- \$ 1.25 15-18 in. ----- \$ 2.25

T. oc. lutea, 10-15 ft.

George Peabody Arborvitae

Graceful, pyramidal, with healthy, bright golden foliage retained throughout year. 3-3½ ft. ----- \$ 3.00 3½-4 ft. ----- \$ 4.00 4-5 ft. ----- \$ 5.50

T. oc. plicata, 10-15 ft.

Moss Arborvitae

Dense, attractive, blue-green, pyramidal variety. Very beautiful crested, obtuse foliage. 2½-3 ft. ----- \$ 2.50 3-4 ft. ----- \$ 3.00

T. oc. pyramidalis, 15-25 ft.

Pyramidal Arborvitae

Narrow columnar growth; denser and darker green than American Arborvitae. Most widely used tall, narrow type. Holds color well throughout year. 1½-2 ft. ----- \$ 1.50 3-4 ft. ----- \$ 3.50 2-2½ ft. ----- 2.00 4-5 ft. ----- 4.50 2½-3 ft. ----- 2.50 8-10 ft. ----- 14.00

T. oc. wareana, 10-15 ft.

Ware (Siberian) Arborvitae

Broad conical type; dense, slow growing, of rugged appearance. Pleasant bluish-green foliage unchanged by winter. Very hardy. 1½-2 ft. ----- \$ 1.75 2½-3 ft. ----- \$ 3.50 2-2½ ft. ----- 2.50 3-4 ft. ----- 5.00

BIOTAS

Branchlets in vertical planes on slender, ascending branches from near the base.

THUYA orientalis---BIOTA aurea conspicua,

7-8 ft. Goldspire Oriental Arborvitae

Pyramidal shaped and a very interesting novelty. Golden yellow in spring, bronze-yellow in winter. 1½-2 ft. ----- \$ 1.50 2-3 ft. ----- \$ 3.00

T. or.---Biota aurea nana, 2-3 ft.

Dwarf Golden Oriental Arborvitae

Popular, low, conical plant; bright golden hue becoming bronze-tipped in winter. A spectacular living globe of gold and green. 9-12 in. ----- \$ 1.00 12-15 in. ----- \$ 1.75 15-18 in. ----- \$ 2.25

T. or.---Biota barri, 5-6 ft.

Dwarf Oriental Arborvitae

Conical plant of slow growth, retaining rich green color all winter. 4-5 ft. ----- \$ 5.00

T. or.---Biota compacta, 4-5 ft.

Siebold Arborvitae

Compact, formal type like Biota aurea nana but with constant, fresh green foliage. Desirable for formal effects or hedges. 15-18 in. ----- \$ 1.40

Use Hemlocks For Their Graceful, Handsome Foliage

HEMLOCKS — A Leading Specialty at Barr's

The Hemlock with its graceful branches, and beautiful, neat, needle foliage can well be made the basis of many fine plantings. Its informality of outline is particularly pleasing. On the open lawn it makes a handsome specimen, but wherever planted it is never out of place. Will remain small many years if sheared regularly.

TSUGA canadensis, 60-80 ft.

Canada Hemlock

The soft, feathery, dark green, fern-like foliage of the Canada Hemlock will give a softening touch to any planting, and combined with its gracefully spreading branches makes of it a magnificent tree. It is the State Tree of Pennsylvania. For specimen planting or in groups on the open lawn, or for hedges.

15-18 in.	\$ 1.00	4- 4½ ft.	\$ 5.50
1½-2 ft.	1.75	4½- 5 ft.	6.00
2-2½ ft.	2.50	5 - 6 ft.	7.50
2½-3 ft.	3.00	6 - 7 ft.	10.00
3-3½ ft.	4.00	10 -12 ft.	22.50
3½-4 ft.	4.75	12 -14 ft.	25.00
	14-16 ft.		\$27.50

T. caroliniana, 50-60 ft. Carolina Hemlock

More compact, darker green and smaller growing than preceding. Yew-like foliage. Its conspicuous, yellowish-brown cones in contrast with the dark foliage makes a most interesting effect.

8-10 ft.	\$17.50	10-12 ft.	\$22.50
---------------	---------	----------------	---------



CANADA HEMLOCK

When Building A New Home

It is advisable to budget 2 to 3 percent for landscaping. Real estate men agree an investment of 3 percent of the cost of the house in Evergreens, Trees, and Shrubs increases the value at least 10 percent and your enjoyment of your home to an immeasurable extent.

At the very beginning of operations put aside the amount you purpose spending for landscaping. Without good landscaping a house gives the appearance of "something wanting," or not being finished.

When and How to Plant Evergreens



(1) Dig hole 6 inches to a foot larger and deeper than ball of earth.

Evergreens transplant best during the Spring months, before and just as new growth is beginning, or for several months following August 15 when the new growth is completed and has become sufficiently hardened.

The excavation for planting should be considerably larger and deeper than the encased roots so as to allow liberal space around the ball for filling in with good soil. Do not remove burlap, only loosen it at top and roll back as indicated in illustration. Carefully pack soil under earth ball. Mix peat moss and rotted manure, or Vigoro, with soil used for back fill. When hole is two-thirds refilled, FLOOD WITH WATER.

In restoring the remainder of the excavated soil allow a shallow basin to remain around the tree to collect the rain and enable it to soak into the ground. Mulch with well-rotted manure or straw to conserve the moisture in the ground and keep it from becoming hard. In the Fall mound the soil against the plants.

Nightly spray the foliage with plain water, and weekly direct a STRONG force of water against the under side of the foliage, when the sun is not shining. This treatment preserves the vigor and beauty of the plant.

Evergreens Should Be Kept Thoroughly Watered to Obtain Best Growth

Beautiful Broad-Leaved Evergreen Shrubs

These splendid plants hold their bright green foliage all the year round and many varieties make a magnificent showing of bloom. Shaded situations are preferred by most of the varieties, giving them an added value in making them available for planting about the north foundation of houses or shady corners. Prefer acid soil.



ABELIA GRANDIFLORA

ABELIA

ABELIA grandiflora, 3-4 ft.

Glossy Abelia or Bush Arbutus

Graceful, arching branches; shining, dark green leaves; dainty, waxy, pinkish-white, fragrant flowers from June to November, followed by interesting display of persistent, purplish sepals. Very attractive in foreground of foundation plantings, singly or in groups; also makes good hedges.

15-18 in., B. & B. ----- \$ 1.25
1 1/2 ft., B. & B. ----- 1.75

A. g., Edward Gouchet, 3-4 ft.

Edward Gouchet Abelia

(New). Large, bright pinkish-lavender flowers. Unusual, lovely, compact plant of spreading habit. Foliage has bronze tinge.

12-15 in. pot grown ----- \$ 1.25

COTONEASTERS

COTONEASTER horizontalis, 1-1 1/2 ft.

Rock Cotoneaster

Small, pink flowers; ornamental bright red fruit; shiny, green leaves; semi-evergreen. Ideal for rock gardens, or for covering banks.

12-15 in., B. & B. ----- \$ 2.00

C. Francheti, 5-6 ft.

Franchet Cotoneaster

Semi-evergreen with gradually arching branches; fruit orange-red persisting greater part of Winter.

12-15 in., (Potted) ----- \$ 1.25

How To Treat The Soil For Azaleas and Rhododendrons

Rhododendrons and Azaleas require an acid soil. For best results, plant in a mixture of three parts leaf mould or Holland Peat to one part soil. In limestone localities one pound aluminum sulphate to each square yard of surface broadcast Spring and Fall, will prove beneficial in acidifying the soil.

The Rhododendrons we list are nursery-grown, and acclimated, and have had the benefit of careful transplanting by which they have gained root systems which will cause them to make better growth than ordinary collected or poorly grown plants.

AZALEAS

(Also see Deciduous Azaleas under Ornamental Shrubs, Page 28.)

Few flowering plants can excel the Azaleas for all around usefulness. They make a most brilliant color display, either singly or in groups, and can be used to good advantage in brightening the foundation planting, doing well among other evergreens.

AZALEA coccinea, 3-4 ft.

Hardy Evergreen Azalea

Improved form of amoena variety; brilliant red flowers. Hardy.

12-18 in., B. & B. ----- \$ 3.00

A. hinodegiri, 3-4 ft.

Crimson Evergreen Azalea

Bright red, double flowers; very showy.

8-10 in., B. & B. \$1.25 12-15 in., B. & B. \$2.50

10-12 in., B. & B. 2.00 15-18 in., B. & B. 3.00

1 1/2-2 ft., B. & B. ----- \$ 5.00

A. yodogawa, 2-3 ft.

Yodogawa Azalea

Brilliant pinkish-lavender, double flowers in early Spring. Very hardy.

1 1/2-2 ft., B. & B. \$3.50 2-2 1/2 ft., B. & B. \$5.00

BOXWOODS

Will thrive in full sunlight, or in shady locations where no other Evergreen will grow.

BUXUS sempervirens, 12-15 ft.

Boxbush

Bushy; deep rich color; slow growing. Frequently used for hedges.

10-12 in., B. & B. ----- \$ 1.00

B. suffruticosa, 3-4 ft.

Dwarf English Box

Especially adapted to edging walks or as a low hedge. This is the attractive variety growing in the formal gardens at Washington's home, Mt. Vernon.

	Ea.	Per 10	Per 100
4-6 in., B. & B. -----	\$0.30	\$ 2.75	\$25.00
6-8 in., B. & B. -----	.60	5.50	50.00
8-10 in., B. & B. -----	1.25	11.00	100.00
10-12 in., B. & B. -----	1.50	13.50	
12-15 in., B. & B. -----	2.00	17.50	

DAPHNE

DAPHNE cneorum, 1 ft.

Rose Daphne

Covered in May with beautiful pink, tubular flowers; fragrant. A splendid rock garden plant.

6-9 in., B. & B. \$0.90 9-12 in., B. & B. \$1.25

Low-Growing Broad-Leaved Evergreen Shrubs Are Very Good for Foundation Planting

EUONYMUS

EUONYMUS patens (sieboldianus), 6-7 ft.

Spreading Euonymus
 Handsome, large, dark green foliage; white flowers July; red berries in Fall.
 12-15 in., B. & B. \$0.60 1½-2 ft., B. & B. \$1.25

E. radicans variegatus, 3-4 ft.

Variiegated Leaf Wintercreeper
 Clinging vine; compact; small, variegated leaves.
 2 yr. potted plants ----- \$ 0.50

E. r. vegetus, 3-4 ft. Bigleaf Wintercreeper
 (Evergreen Bittersweet). Bushy growth, bright scarlet fruits. Will climb, or grow as bush.
 9-12 in., 2 yr. plant ----- \$ 0.75
 12-15 in., 4 yr. plant ----- 1.00

LAUREL

KALMIA latifolia, 4-8 ft. Mountain Laurel
 (The Pennsylvania State Flower)

Bright, dark-green leaves; large showy clusters of rose-colored flowers. One of the most beautiful, most popular and most useful of native, woody plants.
 2-2½ ft., B. & B. \$ 3.50 2½-3 ft., B. & B. \$ 5.00

HOLLY

ILEX crenata microphylla, 5-6 ft.

Small-leaved Holly

Deep green, boxlike leaves. Black berries. Unusually attractive in foundation plantings or as specimens. Compact and slow growing.

1½-2 ft., B. & B. \$3.00 2½-3 ft., B. & B. \$ 5.50
 2-2½ ft., B. & B. 4.50 3-3½ ft., B. & B. 7.50

I. c. convexa (bullatum), 3-4 ft. Boxleaf Holly

Exquisite, dwarf, spreading Evergreen Shrub with small, box-like, convex, glossy, persistent leaves. Small, black berries, ripening in October and remaining over Winter. Good for rock gardens. Especially suitable for foundation planting in sun or shade, or where a dwarf plant is desired.

12-15 in. B.&B. \$ 2.00 1½-2 ft. B.&B. \$ 3.50

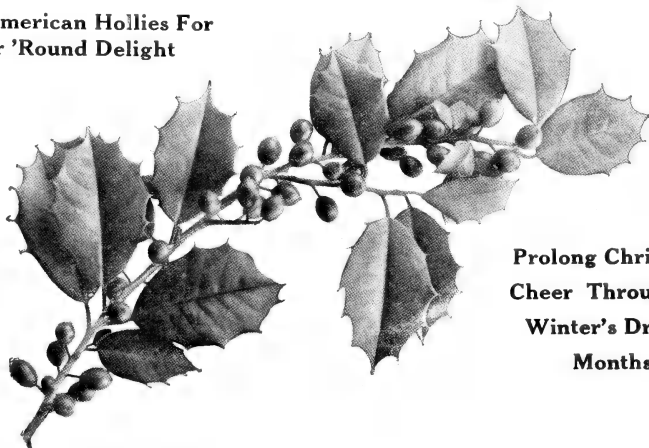
I. glabra, 4-6 ft.

Inkberry

Deep green leaves turning metallic deep purple in Winter; black berries, attractive to birds.

15-18 in. B. B. \$ 2.50 1½-2 ft. B. & B. \$ 3.00

**Plant American Hollies For
 Year 'Round Delight**



**Prolong Christmas
 Cheer Throughout
 Winter's Dreary
 Months**

AMERICAN HOLLY

The glossy, evergreen leaves of the American Holly, with their characteristic wavy margins and spiny teeth, are a beauty to behold throughout the year. When Winter comes, the effect is glorified by the appearance of the brilliant red berries so popular at Christmas time.

American Holly (*Ilex opaca*, 10-12 ft.) is one of the finest plant gems you can introduce on your grounds. It is one that gives pleasure the year round; but it is during the Christmas season that its beauties are most enjoyed. Happily, this beauty remains fresh throughout the dreary Winter months that follow, thus prolonging the Christmas cheer.

Hollies love a slightly acid, well-drained, loamy soil. Dug with a ball of earth, as especially prepared at Barr's, they transplant comparatively easy.

For berries in abundance one must plant the non-bearing type (if there is not another in the vicinity) as well as the berrying kind.

GUARANTEED BERRY-BEARING, B. & B.

12-18 in. ----- \$ 2.00 3- 4 ft. ----- \$ 6.50
 2- 3 ft. ----- 4.00 4- 5 ft. ----- 9.00
 10-12 ft. ----- \$35.00

NON-BEARING, (Male Trees), B. & B.

6- 8 ft. ----- \$12.00 8-10 ft. ----- \$15.00
 10-12 ft. ----- \$20.00

SEX UNDETERMINED, B. & B.

(50 to 60% of these plants will berry)
 12-18 in. ----- \$ 1.75 2- 3 ft. ----- \$ 3.00
 3- 4 ft. ----- \$ 4.00

Evergreen Shrubs Include Some Most Useful and Beautiful Shade-Enduring Plants

PACHYSANDRA

PACHYSANDRA terminalis, 6-8 in.

Pachysandra or Spurge

Evergreen ground cover with dense, glossy foliage forming thick carpet. One of the most valuable plants for difficult situations under trees and in dense shade.

1 yr., 4-6 in., per 10, ---\$1.00; per 100, ---\$7.00
2 yr., 4-6 in., per 10, --- 1.50; per 100, --- 9.00

ANDROMEDA

PIERIS japonica, 3-5 ft.

Andromeda

Bears graceful pendants of white flowers in early Spring. Glossy bright green foliage, especially attractive in Winter when bronze.

15-18 in., B. & B. \$ 4.00 1½-2 ft., B. & B. \$ 5.00

FIRETHORN

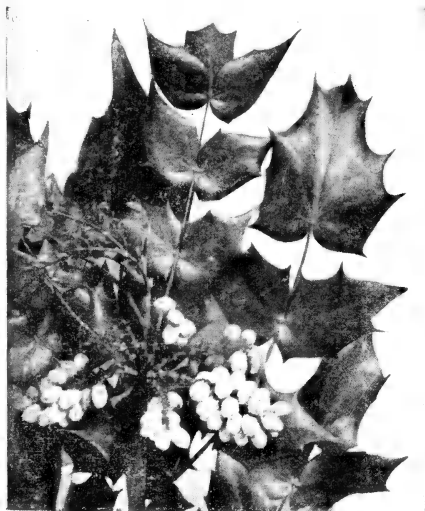
PYRACANTHA coccinea lalandi, 6-8 ft.

Laland Scarlet Firethorn

Glossy foliage; white flowers, followed by large clusters of orange berries; very ornamental.

10-12 in., (Potted) ----- \$ 1.00
1½-2 ft., (Potted) ----- 3.00
2-2½ ft., (Potted) ----- 3.75
2½-3 ft., (Potted) ----- 4.50

(Guaranteed to fruit)



MAHONIA

LEUCOTHOE

LEUCOTHOE catesbaei, 3-4 ft.

Drooping Leucothoe

Attractive, fragrant, white flowers in May, borne in long, pendulous racemes.

15-18 in. clumps, B. & B. ----- \$ 2.75

OREGON GRAPE

MAHONIA aquifolium, 3-4 ft. Hollygrape

Bright, glossy-green, holly-like leaves, turning rich red and bronze in Autumn. Attractive yellow flowers in Spring; berries black.

12-18 in., B. & B. ----- \$ 2.00

1½-2 ft., B. & B. ----- 3.00

FREE LANDSCAPE PLANS AND ESTIMATES

We will gladly help you in your Home Grounds beautifying by furnishing plans and estimates covering the improvements contemplated. Write us for any further information desired.

Evergreen Ground Cover Plants For Difficult, Shady Places

For difficult places under trees and on banks where it is impossible for grass to thrive a class of plants designated as "Ground Cover Plants" can be used with good results. These plants are also valuable in Evergreen and Shrub plantings, filling up the intervening spaces. Other advantages are that they always look well, yet require practically no attention; and being evergreen, are as effective in Winter as in Summer. Among the best plants for this purpose are English Ivy, Pachysandra and Periwinkle.

PACHYSANDRA

Under trees Pachysandra is the real answer to the problem of covering the bare ground with greenery. Another advantage is the protection to the roots of trees afforded by the Pachysandra. The glossy foliage is very attractive. Use ¾ or 1 to 1 sq. ft. of the area to be covered.

	Per 100	Per 1000
1 yr. plants	... \$7.00	\$60.00
2 yr. plants	... 9.00	80.00

ENGLISH IVY

The English Ivy is particularly effective used on banks, to edge walks and under trees. An advantage in using Barr's English Ivy is that it goes further in coverage, each pot containing two plants—a twofold advantage. Plant 10 to 12 inches apart and you will soon have a carpet of green.

	Per 10	Per 100
2¼ in. pot size	... \$ 1.40	\$10.00
(Large or Small-leaved)		

PERIWINKLE

Not only is the Hardy Periwinkle a good ground cover under trees and on hillsides, but its pretty blue flowers also make an appeal. The glossy, evergreen foliage remains beautiful the year round. When planting do not place the crown of the plant below the surface of the soil. Use 3 or 4 to 1 sq. ft. of area.

	Per 100	Per 1000
Strong, field-grown plants	\$8.00	\$70.00
Potted plants	12.50	100.00

25 Plants at the quoted 100 rate; 250 or more Plants at the 1000 rate.

Low-Growing Broad-Leaved Evergreen Shrubs Are Very Good for Foundation Planting

Rhododendrons For Shady Place Plantings

The Rhododendron is a very effective plant used in masses or groups or near dark foliaged evergreens. It is excellent for the difficult shaded corner or on the north side of the house. It fills a need not supplied by any other plant. Its appealing beauty is not only its magnificent florescence but the thick, smooth, glossy leaves borne the year 'round.

Rhododendron Hybrids

Handsomest of the Rhododendrons, the flowers being larger and of a bright, clearer color. They grow into compact, beautiful bushes five to eight feet high. The named varieties are grafted plants.

RHODODENDRON Caractacus. Purple-crimson.

- Medium.
- 1½-2 ft., B. & B. ----- \$ 6.50
- 2 -3 ft., B. & B. ----- 8.00

R. Charles Bagley. Bright red. Medium.

- 1½-2 ft., B. & B. ----- \$ 6.50

R. Mrs. C. S. Sargent. Deep pink, yellow eye. Tall.

- 1½-2 ft., B. & B. ----- \$ 6.50
- 3 -4 ft., B. & B. ----- 12.50

R. Parsons Gloriosa. Lavender blush. Tall.

- 1½-2 ft., B. & B. ----- \$ 6.50

R. Roseum elegans. Rich pink. Tall.

- 1½-2 ft., B. & B. ----- \$ 6.50
- 2-2½ ft., B. & B. ----- 8.00
- 3 -4 ft., B. & B. ----- 12.50

RHODODENDRON carolinianum, 4-5 ft.

Carolina Rhododendron

Light rose flowers in early May. Foliage is relatively small and plant is broad and compact. Tolerates sunshine.

- 1½-2 ft. clumps, B. & B. ----- \$ 3.75



RHODODENDRON

R. c. album, 3-4 ft.
White Carolina Rhododendron
 Pure white form of the preceding.
 2-2½ ft. clumps, B. & B. ----- \$ 3.25

R. maximum, 6-10 ft. Rosebay Rhododendron
 Flowers pale rose to nearly white. July. Good for mass planting.
 2½-3 ft. clumps, B. & B. ----- \$ 5.00
 3 -4 ft., clumps, B. & B. ----- 8.00

What Others Say About Barr's "Will Grow" Evergreens

Conshohocken, Pa.
 I received the evergreens yesterday. They were packed fine and carried in perfect condition. We planted them at once and they improve the appearance of our place already.

MRS. A. P.

State College, Pa.
 All plants we have received from your company have been perfectly satisfactory. We have growing on our lawn some very nice specimens of your Evergreens.

F. H. S.

Nicholson, Pa.
 The True Dwarf English Box arrived and I had them immediately planted. They were in excellent condition. Last evening I went up to see how they stood two hot days. They were fine. Both my husband and I are very pleased. There's nothing like it in our cemetery.

MRS. F. E. R.

Peach Bottom, Pa.
 I am very pleased with the Mahonia, it is a real beauty. However, I have always found Barr's Trees satisfactory and in 20 years have never lost a single tree or shrub from you.

MRS. EDGAR KIRK

Ephrata, Pa.
 I just wish you could see the setting of Evergreens you planted. It looks wonderful. I don't think you could buy same for \$1,000. I am a good booster for Barr's Nurseries.

G. R. S.

Bradford, Pa.
 Our spruce trees are growing wonderfully well, and are more beautiful that I ever dreamed they would be. In fact, they are the finest specimen of spruce trees in the city, and we naturally are very proud of them.

MRS. HUGH GRANT

In Borders, In Groups, In Shady Foundation Plantings Rhododendrons Prove Useful

"Will Grow" Shade and Ornamental Trees

Does your home stand out in the bare sun, without background and unframed? Shade trees will make a wonderful transformation and give comforting shade as well.

Plant a tree—one with a future preferably. It pays to buy the larger sizes for immediate effect—you have no waiting to realize results.

Figures following names indicate approximate height these varieties attain.

"Cal." means thickness of trunk.



NORWAY MAPLE

THE MAPLES

Maples are widely used for street and lawn planting, being one of the best shade trees known. Their great popularity is evidence of their reliability.

ACER platanoides, 50-75 ft. Norway Maple

Handsome, round-headed tree with broad, smooth, deep green leaves, holding color till late in Fall. Popular tree for street planting.

6-8 ft.	\$ 2.00
8-10 ft.	2.50
8-10 ft., 1 -1¼ in. cal.	3.00
12-14 ft., 2 -2½ in. cal.	6.50
14-16 ft., 2½-3 in. cal.	8.00
15-17 ft., 3 -3½ in. cal.	10.00
18-20 ft., 5 -6 in. cal., B. & B.	32.00
20-24 ft., 6 -7 in. cal., B. & B.	40.00

A. p. schwedleri, 30-40 ft.

Schwedler Purple Maple

Leaves a deep purple in Spring, changing to dark bronze-green during the Summer. Habit same as Norway Maple.

6-8 ft.	\$ 3.00
16-18 ft., 4-5 in. cal., B. & B.	25.00
18-20 ft., 5-6 in. cal., B. & B.	32.00
20-24 ft., 6-7 in. cal., B. & B.	40.00
22-24 ft., 7-8 in. cal., B. & B.	43.00

A. rubrum, 40-60 ft. Red Maple

Dense, round head. Gorgeous scarlet in Autumn. Do not confuse this shade tree with the smaller Bloodleaf Dwarf Maple.

	Not B.&B. B.&B.
6-8 ft.	\$ 2.50
8-10 ft.	3.50
12-14 ft., 2 -2½ in. cal.	7.50
12-14 ft., 2½-3 in. cal.	9.00
14-16 ft., 3 -3½ in. cal.	12.50
16-18 ft., 4 -5 in. cal.	27.00

A. saccharinum wieri, 50 ft. Wier Maple

Graceful, half-drooping habit; delicately cut leaves.

8-10 ft.	\$ 2.50
---------------	---------

A. saccharum, 40-60 ft. Sugar Maple

Upright and dense in growth; large leaves, assuming beautiful yellow or scarlet in Fall making it a most brilliant spectacle. Its strong, vigorous growth, perfect health, and resistance to disease make this a first choice for a street or lawn tree.

	Not B.&B. B.&B.
6-8 ft.	\$ 2.50
8-10 ft.	3.00
10-12 ft., 1¼-1½ in. cal.	4.00
12-14 ft., 1½-2 in. cal.	5.50
12-14 ft., 2 -2½ in. cal.	7.50
12-14 ft., 2½-3 in. cal.	10.00
14-16 ft., 3 -3½ in. cal.	12.50
16-18 ft., 4 -5 in. cal.	25.00
18-20 ft., 5 -6 in. cal.	35.00

ORNAMENTAL DWARF MAPLES

Beautiful low growing trees or shrubs. Attractive as single specimens on the lawn or in masses. Will grow and retain color best in full sun.

ACER palmatum atropurpureum, 10-15 ft.

Bloodleaf Dwarf Maple

Leaves star-shaped, blood red in spring; in autumn assuming striking tints of red.

15-18 in. (Potted)	\$ 2.50
1½-2 ft., B. & B.	3.50
2 -2½ ft., B. & B.	5.00
3 -3½ ft., B. & B.	8.00
4 -4½ ft., B. & B.	10.00
4½-5 ft., B. & B.	12.00
5 -6 ft., B. & B.	15.00

A. p. a. dissectum, 4-6 ft.

Red Cutleaf Dwarf Maple

A form of the Cutleaf Dwarf Maple in which the finely cut leaves remain red all season.

15-18 in. B. & B.	\$ 4.00
------------------------	---------

A. p. dissectum, 4-6 ft.

Green Cutleaf Dwarf Maple

Finely cut green leaves, assuming striking tints of red in Autumn. Dwarf, spreading habit; pendulous branches.

3 -3½ ft., B. & B.	\$ 7.00
3½-4 ft., B. & B.	10.00

We Advise Baling and Burlapping (B.&B.) All Trees Over Four Inches in Caliper (Cal.)

BIRCH

BETULA alba, 40-50 ft. White Birch
Highly colored, silvery-white bark; small, triangular leaves; pyramidal in form.
5-6 ft. ----- \$ 2.50

B. a. laciniata, 30-40 ft. Cut Leaf Weeping Birch
Silvery-white bark, drooping branches and finely cut, bright foliage. Very graceful.
5-6 ft. ----- \$ 3.00
8-9 ft. ----- 4.00

REDBUD

CERCIS canadensis, 12-15 ft. American Redbud (Judas Tree)
Profusion of pinkish-red flowers before the leaves appear. Small, round-headed tree.
3-4 ft. ----- \$ 1.50
5-6 ft., B. & B. ----- 2.50
6-8 ft., B. & B. ----- 3.00

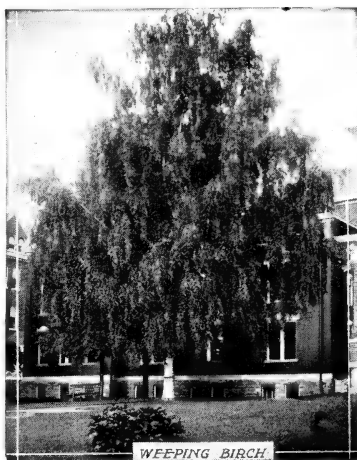
FRINGETREE

CHIONANTHUS virginica, 15-18 ft. White Fringetree
Attractive, fragrant, tassell-like, white flowers. May-June. Rich, heavy foliage.
2-3 ft. ----- \$ 1.00 3-4 ft. ----- \$ 1.25

DOGWOODS

One of the best small ornamental trees for lawn decoration; pretty in border with Evergreens, or in masses. Showy spring flowers, followed by bright-red berries and beautiful autumn foliage display.

CORNUS florida, 12-20 ft. White Dogwood
Showy white flowers in Spring before the leaves appear. In Fall has scarlet berries and rich crimson foliage. For specimen planting or in groups.
Not B.&B. B.&B.
3-4 ft. ----- \$ 1.25
4-5 ft. ----- 2.50 \$ 3.25
5-6 ft. ----- 4.00 5.00
6-8 ft. ----- 6.00 7.00

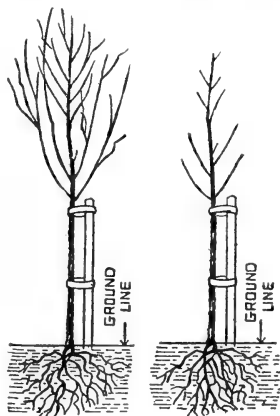


C. f. rubra, 12-18 ft. Red Flowering Dogwood
Its deep rose "flowers" make a very impressive sight. Brilliant Fall foliage gives added interest.
2½-3 ft., B. & B. ----- \$ 2.75
3 -3½ ft., B. & B. ----- 3.50
3½-4 ft., B. & B. ----- 4.50
4 -5 ft., B. & B. ----- 6.00

C. kousa, 15-18 ft. Kousa Dogwood
Small, creamy-white flowers in showy clusters. Good for prolonging Dogwood season by blooming in June after the other Dogwoods.
2-3 ft. ----- \$ 1.50

C. mas, 12-18 ft. Cornelian Cherry
Showy, small tree with profuse, small, delicately scented, yellow flowers before the leaves. Large, cherry-red, edible fruits in August.
3-4 ft. ----- \$ 1.80

How To Plant and Prune Shade and Ornamental Trees



Constantly protect all roots from sun and air. Plant in holes dug much larger than the spread of the roots so that the latter can be carefully placed in their natural directions. Tap roots of oaks should extend straight down.

Tree should stand two inches deeper than it did in the nursery. Work the soil firmly under and about the roots. When the hole is two-thirds filled, water heavily to set soil about roots. Complete the filling of the hole with good rich soil, then mulch with straw manure spread three inches deep.

Before setting trim the branches by removing three-fourths of last year's growth, but with shade trees having a heavy top, from one-third to one-half of the top should be removed by cutting out some of the small branches, and trimming back the side branches. Do not cut off the leader branch (main stem branch). Leave branches at wide angles so as to provide a broad head. Cut off all bruised or broken roots.

Drive a solid stake into the ground and tie tree to it with heavy twine or strips of old cloth. This prevents tree whipping in the wind and loosening roots in the soil. Two stakes should be used if required.

HAWTHORNS

The Hawthorns make a brilliant floral display in May, and in Autumn are especially attractive in their colored foliage. Highly ornamental when in fruit, too. For specimen or border planting.

CRATAEGUS coccinea, 12-15 ft.

Thicket Thorn

Showy with large scarlet fruit; smooth, cut-toothed, large leaves; white flowers. ----- \$ 6.00
6-8 ft., B. & B.

C. cordata, 12-16 ft. Washington Thorn

White flowers, bright red fruit in Fall displayed in clusters against orange or scarlet foliage. Best for showy fruit.
3-4 ft., B. & B. ----- \$ 1.50
4-5 ft., B. & B. ----- 4.00
12-14 ft., 3-4 in. cal., B. & B. ----- 25.00

C. crusgalli, 10-12 ft. Cockspur Thorn

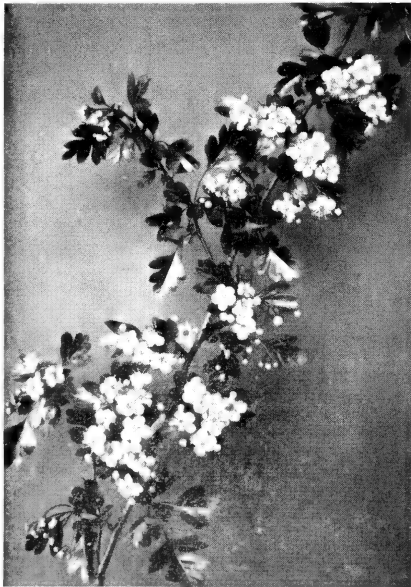
Attractive, white flowers, shiny green foliage; useful for hedges or planted as specimens.
6-8 ft., B. & B. ----- \$ 6.00

C. oxycantha, 10-12 ft. English Hawthorn

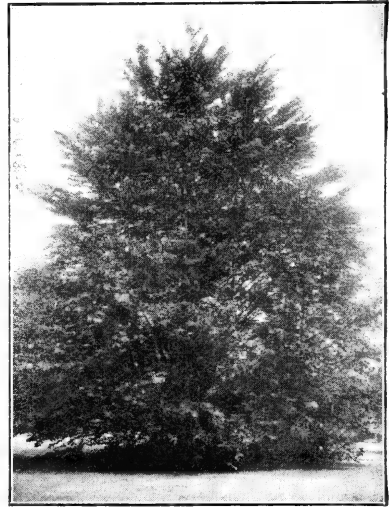
Covered in Spring with fragrant, white flowers and in Fall with bright red fruit; bushy.
5-6 ft. ----- \$ 4.00 6-8 ft. ----- \$ 5.00

C. o. pauli, 12-15 ft. Paul Scarlet Thorn

Showy, numerous large, scarlet-crimson flowers.
5-6 ft. ----- \$ 4.00
6-8 ft., 1-1¼ in. cal. ----- 5.00



WASHINGTON THORN



RIVERS PURPLE BEECH
BEECH

The Beech develop into one of the most magnificent of trees—tall, broad and stately. Make excellent lawn specimens. Use leaf-mold when planting.

FAGUS americana, 40-50 ft. American Beech

Close and smooth, light gray bark. Its dark green leaves turn rich golden-brown in autumn. An interesting tree of incomparable beauty, the branches "facing down" to the ground. Excellent tree for specimen planting on the open lawn.
8-10 ft., 2-2½ in. cal., B. & B. ----- \$ 7.50
10-12 ft., 2½-3 in. cal., B. & B. ----- 10.50
12-14 ft., 3-4 in. cal., B. & B. ----- 15.00

F. sylvatica, 40-50 ft. European Beech

More compact than americana and smaller leaves, particularly beautiful in their Spring coloring. Standard or low branched.
3-4 ft. ----- \$ 3.00

F. s. heterophylla (asplenifolia), 30-40 ft. Fernleaf Beech

Graceful, dense, low, shrubby tree with narrow, deeply toothed and lobed foliage.
3-4 ft., B. & B. ----- \$ 5.00
4-5 ft., B. & B. ----- 7.50

F. s. pendula, 25-35 ft. Weeping Beech

Broad, downward branches, bending to the ground. An unusual tree that will make a very picturesque specimen on the lawn.
4-5 ft., B. & B. ----- \$8.00 6-8 ft., B. & B. ----- \$14.00
8-10 ft., 1½-2 in. cal., B. & B. ----- \$18.00

F. s. riversi, 35-40 ft. Rivers Purple Beech

Intensely colored tree; large, dark, crimson-purple leaves holding color all season.
4-5 ft., B. & B. ----- \$10.00 7-8 ft., B. & B. ----- \$16.00
8-9 ft., 1½-2 in. cal. ----- 20.00

"Will Grow" Trees Are Freshly Dug on Receipt of Order—Not Dried-Out Cold Storage Stock

WHITE ASH

FRAXINUS americana, 60-70 ft. White Ash
 Rapid-growing, open, broad-headed tree; straight, clean trunk; smooth gray bark.
 8-10 ft., 1¼-1½ in. cal. ----- \$ 3.00

GINKGO TREE

GINKGO biloba, 50-70 ft. Maidenhair Tree
 Pyramidal tree with clean, straight trunk, and fan-shaped, Maidenhair Fern-like leaves; immune from insects. A most interesting and unusual tree, varying greatly in outline. Makes a handsome lawn specimen and is a good street tree where dense shade is not desired.
 6-8 ft. ----- \$ 2.50
 10-12 ft., 1¼-1½ in. cal. ----- 5.00
 10-12 ft., 1½-2 in. cal. ----- 7.00
 12-14 ft., 2 -2½ in. cal. ----- 10.00
 14-16 ft., 2½-3 in. cal. ----- 14.00
 16-20 ft., 3 -3½ in. cal. ----- 18.00
 20-22 ft., 4 -5 in. cal. ----- 25.00

COFFEE TREE

GYMNOCLADUS dioica, 40-50 ft. Kentucky Coffee Tree
 Immense blue-green leaves. White flowers in open racemes, followed by interesting fruit-pods persisting through the winter. A picturesque and unusual ornamental tree for the lawn.
 6-8 ft. ----- \$ 4.00
 10-12 ft., 2-2½ in. cal. ----- 10.00

SILVERBELL

HALESIA tetraptera, 12-15 ft. Great Silver Bell
 Drooping, snow-white, bell-shaped flowers in profusion in May. Decorative, brown, winged fruits.
 3-4 ft. ----- \$ 1.25

GOLDENCHAIN

LABURNUM vossi, 20-30 ft. Voss Goldenchain
 Dark green leaves falling late in Autumn; long graceful chains of bright yellow, Wisteria-like flowers late Spring. Hardier than *L. vulgare*.
 4-5 ft. ----- \$ 3.00

BALL and BURLAP CHARGES

When it is desired to have Trees or Shrubs balled and burlapped (B. & B.) there will be an extra charge for this additional treatment unless quoted as B. & B. This charge will be in conformity with the following schedule:

	Size	Extra
	of Ball	for B&B
Large Shrubs	8-10 in.	\$ 0.35
<i>Size of Tree</i>		
5-10 ft., 1 -1¼ in. cal.	10-12 in.	.50
8-10 ft., 1¼-1½ in. cal.	12-15 in.	.75
10-12 ft., 1½-1¾ in. cal.	16-18 in.	1.25
10-12 ft., 1¾-2 in. cal.	18-20 in.	2.00
12-14 ft., 2 -2½ in. cal.	20-24 in.	3.50
12-14 ft., 2½-3 in. cal.	24-30 in.	5.50
14-16 ft., 3 -3½ in. cal.	30-35 in.	8.50
16-18 ft., 3½-4 in. cal.	36-40 in.	11.50
18-20 ft., 4 -5 in. cal.	45-50 in.	16.00

L. vulgare, 25-30 ft. Common Goldenchain
 Flowers yellow, pea-like, in hanging clusters, resembling yellow Wisterias, in early June. Plant in sheltered location.
 3-4 ft. ----- \$ 1.50

LARCH

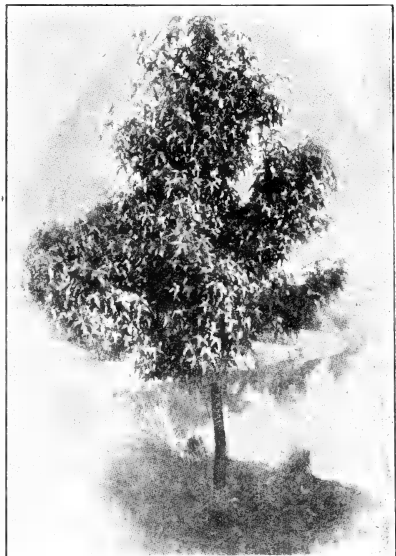
LARIX europae, 50-60 ft. European Larch
 Evergreen-like tree with bright green, needle-like foliage in early Spring studded with purplish flowers.
 4-5 ft., B. & B. ----- \$ 5.00

SWEET GUM

LIQUIDAMBER styraciflua, 50-60 ft. Sweet Gum
 Leaves star-shaped and glossy, changing to brilliant crimson in Fall making it an outstanding tree. Tall, pyramidal type, with interesting, corky bark.
 4-5 ft. ----- \$ 2.50
 6-8 ft., 1 -1½ in. cal. ----- 5.00
 8-10 ft., 1½-2 in. cal., B. & B. ----- 8.50
 10-12 ft., 2½-3 in. cal., B. & B. ----- 14.50
 12-14 ft., 4 -5 in. cal., B. & B. ----- 25.00

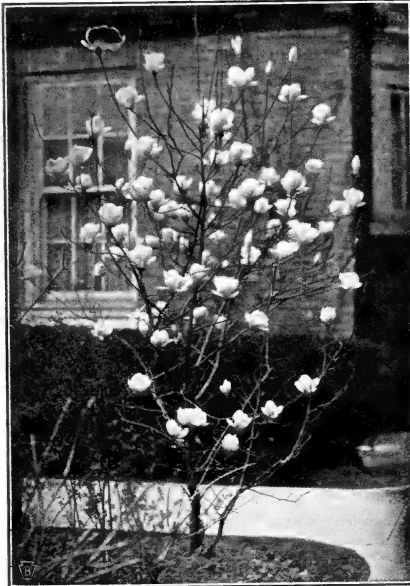
TULIP TREE

LIRIODENDRON tulipifera, 50-70 ft. Tulip Tree
 Handsome pyramidal tree; tulip-like flowers, yellow with orange and green, in late Spring. As the tree matures its stateliness easily replaces the passing beauty of the flowers.
 4-5 ft. ----- \$ 2.00
 8-10 ft., 1¼-1½ in. cal. ----- 4.00
 10-12 ft., 2 -2½ in. cal., B. & B. ----- 10.00



SWEET GUM

After Leaves Have Appeared Only Balled and Burlapped (B.&B.) Trees Can Be Planted



MAGNOLIA

MAGNOLIAS

The Magnolias are small trees that give distinction to any lawn, being especially beautiful in foliage and in the large flowers, conspicuous in the early spring. A lawn is not complete without Magnolias. American varieties flower after the leaves appear; oriental, before, and more profusely.

MAGNOLIA glauca, 15-20 ft. Sweetbay
Large, globular, creamy white, fragrant flowers 2-3 in. across; fruit pink and showy; long, glossy leaves. American.

2-3 ft., B. & B. \$2.00 3-4 ft., B. & B. \$4.00
4-5 ft., B. & B. \$6.50

M. kobus, 20-30 ft. Kobus Magnolia
Beautiful semi-double, starry, white flowers 4-5 inches across in May, followed by fruits 4-5 inches long. Narrow pyramidal tree; hardiest of the Magnolias. Oriental.

6-8 ft., B. & B. \$8.00 8-10 ft., B. & B. \$12.00

M. soulangeana, 12-18 ft. Saucer Magnolia
Showy, 5 to 6 inch flowers, pink outside, white within; April. Glossy foliage. Oriental.

1½-2 ft., B. & B. \$3.00 3-4 ft., B. & B. \$6.50
6-7 ft., B. & B. \$12.00

M. s. lennei, 12-18 ft. Lenne Magnolia
Large, cup-shaped flowers, deep rose outside, white inside; just after Saucer Magnolia. Recurrent blooms in the Fall. Oriental.

1½-2 ft., B. & B. \$3.00 5-6 ft., B. & B. \$10.00
6-7 ft., B. & B. \$12.00-\$15.00

M. s. nigra, 10-12 ft. Purple Lily Magnolia
Late flowering, darkest purple blooms of all Magnolias and later blooming; May. Dwarf habit. Oriental.
2-3 ft., B. & B. \$4.00 3-4 ft., B. & B. \$7.00
4-5 ft., B. & B. \$12.00

M. s. norbertiana, 12-18 ft. Norbert Magnolia
Like Saucer Magnolia in growth but flowers are deeper pink, and about ten days later. Oriental.
6-8 ft., B. & B. \$12.00

M. stellata, 6-8 ft. Star Magnolia
Distinct and charming, slow growing, small tree. Flowers white, semi-double, profuse, fragrant. Late March; first Magnolia to bloom. Oriental.
2-3 ft., B. & B. \$5.00 3-4 ft., B. & B. \$8.00

M. s. rosea, 6-8 ft. Pink Star Magnolia
Like the preceding only the flowers are a beautiful rose-pink; gorgeous. Oriental.
2-3 ft., B. & B. \$5.00 3-4 ft., B. & B. \$8.00

FLOWERING CRABS

The Flowering Crab is a most charming tree and worthy of a place on every lawn. Good for massing or planting along drives. Most useful for small home grounds. Gorgeous profusion of blooms.

MALUS eleyi, 15-18 ft. Eley Crab
Profusion of rosy-carmine, single flowers with large, broad petals. Lustrous, purple leaves and purple fruit.
5-6 ft. \$ 2.75

M. floribunda, 10-15 ft. Rose Flowering Crab
Profuse rose-colored, single flowers, 1-1¼ in. across, appearing early with the foliage; fruit small, yellow.
4-5 ft. \$ 2.00 6-8 ft. \$ 3.00

M. f. atrosanguinea, 10-15 ft. Carmine Crab
Rich, fadeless deep carmine, single flowers in great profusion. Red fruit.
4-5 ft. \$ 2.00 6-8 ft. \$ 3.00

M. hoppi, 12-15 ft. Hopa Red Flowering Crab
Large, bright rose-red flowers in profusion. Fruit red; leaves purplish. Extremely attractive. Very hardy.
4-5 ft. \$ 2.00 5-6 ft. \$ 2.75

M. ioensis plena, 10-15 ft. Bechtel Crab
Large, double, fragrant flowers, delicate shell-pink, resemble small roses. Latest to bloom.
3-4 ft. \$ 2.00 4-5 ft. \$ 3.00
5-6 ft. \$ 4.00

M. neidzwetzkyana, 15-20 ft. Redvein Crab
Leaves, flowers, fruit, bark, all reddish-brown.
5-6 ft. \$ 2.75 6-8 ft. \$ 3.00

M. scheideckeri, 10-12 ft. Scheidecker Crab
Many large, semi-double, tinged-pink flowers in handsome clusters. Large, yellow fruits.
5-6 ft. \$ 2.75 6-8 ft. \$ 3.00

M. sieboldi, 15-20 ft. Toringo Crab
Flowers single, blush, ¾ inch across. Handsome in autumn for showy, cherry-like, small, red fruits in drooping clusters. Best fruited Crabapple.
3-4 ft. \$ 2.00

"Will Grow" Trees are Strongly-Rooted, Straight-Trunked and Nicely Branched

Save years of waiting for desired shade — plant Barr's large specimen trees for their immediate matured effects. These root-perfected trees have their own personality. Beauty and vigor have been grown into them. Furnished B. & B. they transplant very successfully.

When buying trees check on trunk diameter, known as caliper, (cal.) as this is better index to value than height alone.

SOURWOOD

OXYDENDRUM arboreum, 10-12 ft. Sourwood
Graceful clusters of white flowers in August. Foliage vivid scarlet in Autumn. Wants acid soil.
2-3 ft. -----\$ 1.25 3-4 ft., B. & B. --\$ 2.50
5-6 ft., B. & B. --\$ 5.00

PLANETREE

PLATANUS orientalis, 50-60 ft. Oriental Plane
(European Plane Tree.) Good for smoky atmospheres of cities. Large head of bright green, maple-shaped foliage. Rapid growing.
6-8 ft. -----\$ 2.50
8-10 ft., 1 1/4 in. cal. ----- 3.00
8-10 ft., 1 1/4-1 1/2 in. cal. ----- 4.00
10-12 ft., 2 -2 1/2 in. cal. ----- 8.50

POPLAR

POPULUS nigra italica, 50-60 ft. Lombardy Poplar
Narrow, pyramidal tree of quick growth; for landscape effects and screens.
6-8 ft. -----\$ 1.00 10-12 ft. -----\$ 3.00



BECHTEL CRAB

FLOWERING CHERRIES AND PLUMS

Picturesque trees of exquisite color and fragrance are the Flowering Cherries and Plums. When the Flowering Cherries in Washington, D. C., are in bloom, thousands of persons travel great distances to see the notable display. These prolific blooming trees are most effective planted in small groups or masses, but also make showy trees when planted as single specimens against a dark background.

Flowering Cherries

PRUNUS serrulata (Kwansan), 20-25 ft. Double Rose Flowering Cherry
Medium early bloom. Large, double rose-pink flowers, almost red in bud. Very popular.
4-5 ft. -----\$ 2.50 5-6 ft. -----\$ 4.00

P. s. (Kofugen), 20-25 ft. Double Pink Flowering Cherry
Deep pink, double flowers expanding with the coppery, young foliage making a nice harmony. Late.
4-5 ft. -----\$ 2.50

P. s. (Paul Wohlert), 20-25 ft. Paul Wohlert Flowering Cherry
A fragrant, early bloomer with semi-double, deep pink or red flowers.
4-5 ft. -----\$ 2.50

P. shirofugen, 25-30 ft. Double Blush Pink Cherry
Pink buds opening into large, double, white flowers, gradually becoming blush. Late.
5-6 ft., B. & B. -----\$ 2.50

P. subhirtella pendula, 15-20 ft. Single Weeping Flowering Cherry
Clothed in May with profusion of single, pink flowers in small clusters on drooping branches almost touching the ground.
5-6 ft. stem, 2 year head, B. & B. -----\$ 6.00

P. s. p., fl. pl., 15-20 ft. Double Weeping Flowering Cherry
Similar to former, except flowers are double.
5-6 ft. stem, 2 year head, B. & B. -----\$ 7.00

Flowering Plums

P. pissardi, 8-10 ft. Purpleleaf Plum
Bright purple leaves all Summer. Dark wine-red flowers in profusion.
4-5 ft. -----\$ 1.25 6-8 ft. -----\$ 1.50

P. triloba, fl. pl., 6-10 ft. Double Flowering Plum
(Rose Tree of China.) Upright in growth; slender branches completely covered with double, pink flowers before leaves.
2-3 ft. -----\$ 1.00 3-4 ft. -----\$ 1.25

Trucking of Heavy B.&B. Trees Three Inches in Caliper and Over Charged Extra at Cost

OAKS

Majestic trees, strongly formed and with beautiful foliage, particularly handsome in the autumn. Rank as outstanding trees for lawn and street planting. Beautiful grown as single trees or grouped together.

QUERCUS alba, 75-100 ft. **White Oak**
Light gray bark; broad, open head; foliage beautiful red-purple in the Fall. Prefers moist soil.
6-8 ft. ----- \$ 3.50

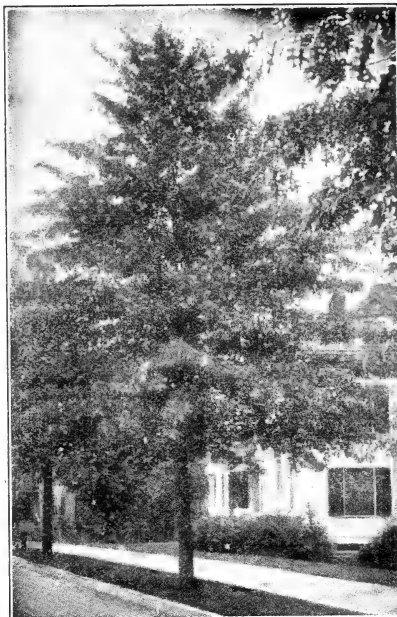
Q. bicolor, 50-60 ft. **Swamp White Oak**
Resembles Q. alba but less spreading in growth; bark shaggy. For moist situations.
10-12 ft., 1½-2 in. cal. ----- \$ 4.00
12-14 ft., 2-2½ in. cal. ----- 5.00

Q. coccinea, 70-90 ft. **Scarlet Oak**
Deeply cut, bright green, glossy leaves becoming brilliant scarlet in Autumn, persisting to Spring.
6-8 ft. ----- \$ 3.50
8-10 ft., 1-1¼ in. cal. ----- 5.00
8-10 ft., 1¼-1½ in. cal. ----- 7.00
10-12 ft., 1½-2 in. cal. ----- 9.00
12-14 ft., 2-2½ in. cal. ----- 13.00
14-16 ft., 2½-3 in. cal. ----- 18.00
16-18 ft., 4-5 in. cal., B. & B. ----- 35.00

Q. palustris, 40-60 ft. **Pin Oak**
Rapid growing; pyramidal head. Glossy, green leaves turning beautiful crimson in Autumn.
6-8 ft. ----- \$ 2.50
8-10 ft., 1-1¼ in. cal. ----- 3.50
8-10 ft., 1¼-1½ in. cal. ----- 4.50
10-12 ft., 1½-1¾ in. cal. ----- 5.50
10-12 ft., 1¾-2 in. cal. ----- 6.50
12-14 ft., 2-2½ in. cal. ----- 8.00
14-16 ft., 2½-3 in. cal. ----- 10.00
14-16 ft., 3½-4 in. cal., B. & B. ----- 22.00
16-18 ft., 5-6 in. cal., B. & B. ----- 44.00
18-20 ft., 6-7 in. cal., B. & B. ----- 58.50
20-24 ft., 7-8 in. cal., B. & B. ----- 66.50

Q. robur, 40-50 ft. **English Oak**
Leaves small, round lobed, dark green above, glaucous beneath; broad, round-headed tree with stout, spreading branches. A long-lived majestic tree.
14-16 ft., 2½-3 in. cal., B. & B. ----- \$ 8.00

Q. rubra, 50-75 ft. **Red Oak**
Large, open tree, attractive for its smooth bark, straight branches and the dark red Autumn coloring of its leaves.
6-8 ft. ----- \$ 3.00
8-10 ft., 1-1¼ in. cal. ----- 5.00
8-10 ft., 1¼-1½ in. cal. ----- 6.00
10-12 ft., 1½-1¾ in. cal. ----- 7.50
10-12 ft., 1¾-2 in. cal. ----- 8.50
12-14 ft., 2-2½ in. cal. ----- 11.00
16-18 ft., 4-5 in. cal., B. & B. ----- 33.00
18-20 ft., 5-6 in. cal., B. & B. ----- 46.50
20-25 ft., 6-7 in. cal., B. & B. ----- 63.00



PIN OAK

WILLOW

SALIX babylonica, 30-40 ft. **Weeping Willow**
Particularly attractive near water; branches olive-green, slender and drooping.
5-6 ft. ----- \$ 1.25 6-8 ft. ----- \$ 2.50
8-10 ft., 1¼-1½ in. cal. ----- \$ 3.00

S. vitellina pendula, 25-30 ft. **Golden Weeping Willow**
Branches bright yellow; attractive tree for specimen use.
4-6 ft. ----- \$ 1.25
8-10 ft., 1½-2 in. cal. ----- 2.50
10-12 ft., 2-2½ in. cal. ----- 5.00
11-16 ft., 5-6 in. cal., N. B. ----- 20.00

SCHOLAR TREE

SOPHORA japonica, 15-20 ft. **Chinese Scholar Tree**
(Pagoda). Foliage dark green, glossy; clusters of pea-like, creamy-white flowers in July. Does well under city conditions.
6-8 ft., 2½-3 in. cal., B. & B. ----- \$ 8.00
12-15 ft., 4-5 in. cal., B. & B. ----- 20.00

MOUNTAIN ASH

SORBUS aucuparia, 20-40 ft. **European Mountain Ash**
Attractive white flowers in May, followed by showy clusters of bright red berries.
4-5 ft. ----- \$ 1.50 6-8 ft. ----- \$ 2.00
8-10 ft. ----- \$ 3.50

Packing Charged Only on Large Trees

Catalog prices include packing, except on large trees. For schedule of packing charges see inside back cover page.

Schedule of charges for Baling and Burlapping (B. & B.) will be found on Page 23.

LINDEN

Fast growing shade trees for lawn, park or avenue planting; straight growth and symmetrical outline. The fragrance of the inconspicuous yellow flowers in early summer is agreeably noticeable to the passerby.

TILIA americana, 60-80 ft.

Basswood or American Linden

Conical, dense head. Large, smooth, glossy, rich green leaves with yellow twigs; fragrant, yellow flowers. Fall foliage yellow. Good for lawn planting.

5-6 ft. -----	\$ 1.50
12-14 ft., 2½-3 in. cal. -----	6.00

T. cordata, 50-60 ft.

Littleleaf European Linden

Fine, conical tree of dense and compact growth; red bark and deep green, small, exquisite leaves. Withstands city conditions.

4-5 ft. -----	\$ 1.50
10-12 ft., 2-2½ in. cal. -----	5.00

T. tomentosa (argentea), 40-50 ft.

Silver Linden

Compact, neat, pyramidal tree of somewhat upright branching habit; 5 inch leaves green above, silvery beneath. Withstands heat and drought. A favorite tree for formal planting, especially in suburban districts where there is a minimum of smoke and dust.

10-12 ft., 1½-2 in. cal. -----	\$ 4.00
12-14 ft., 2-2½ in. cal. -----	5.00

ELM

Graceful, majestic trees. Fine for avenues, parks and near homes. Prefer moist soil. Good for use as a background or frame for the house over which its protection and beauty tower.

ULMUS americana, 60-80 ft. American Elm

Long, ascending branches, gradually spreading; drooping, slender branchlets. One of the noblest and most beautiful of large growing trees.

5-6 ft. -----	\$ 1.25
10-12 ft., 1½-2 in. cal. -----	3.00
12-14 ft., 2-2½ in. cal. -----	5.00
14-16 ft., 2½-3 in. cal. -----	6.50
14-16 ft., 3-4 in. cal. -----	10.00
16-18 ft., 5-6 in. cal., B. & B. -----	35.00
18-20 ft., 6-8 in. cal., B. & B. -----	43.00

U. a. vaseii, 60-80 ft.

Vase Elm

Spreading type of Elm with large foliage and uniformity of shape; quick growing.

8-10 ft., 1-1¼ in. cal. -----	\$ 3.00
12-14 ft., 2-2½ in. cal. -----	5.50
12-14 ft., 2½-3 in. cal. -----	9.00
14-16 ft., 3-4 in. cal. -----	12.00

U. foliacea suberosa, 50-75 ft. Corkbark Elm

An unusual specimen tree for lawn planting. Very graceful, slightly drooping branchlets having cork-like wings and small leaves.

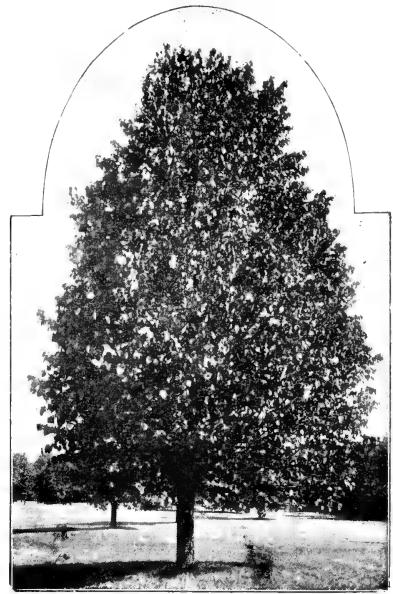
15-20 ft., 5-6 in. cal., B. & B. specimens -----	\$35.00
20-24 ft., 6-7 in. cal., B. & B. specimens -----	43.00

U. glabra, 50-75 ft.

Scotch Elm

Broad, round-topped head, spreading branches; leaves very short stemmed, 3-6 in. long.

8-10 ft., 1½-2 in. cal. -----	\$ 3.00
10-12 ft., 2-2½ in. cal. -----	5.00



AMERICAN LINDEN

U. molineii, 60-75 ft.

Moline Elm

Pyramidal in growth somewhat like a Lombardy Poplar but much better; older trees more spreading. Fast growing tree with large dark green foliage. Ideal for narrow streets and for tall screening purposes.

6-8 ft. -----	\$ 2.00
12-14 ft., 1½-2 in. cal. -----	5.00
12-14 ft., 2-2½ in. cal. -----	7.00
14-16 ft., 2½-3 in. cal. -----	10.00
16-18 ft., 3-3½ in. cal. -----	13.00
18-22 ft., 6-8 in. cal., B. & B. -----	43.00

U. pumila, 40-50 ft.

Asiatic, or Chinese Elm

Very rapid grower, yet hard wooded; graceful form; leaves very small; drought resistant.

4-5 ft. -----	\$ 1.25
8-10 ft., 1½-2 in. cal. -----	3.50
10-12 ft., 2-2½ in. cal. -----	4.50
16-18 ft., 4-5 in. cal. -----	10.00

Spiral Wrap For Trees

Pure vegetable, waterproof, kraft paper for wrapping trunks of newly planted trees. Adjusts itself automatically to contour of tree. Protection for shade and fruit trees against sun scald, loss of moisture, and attacks of insects, rabbits and field mice. Rolls of 155 lineal feet, 5 inches wide, 75c ea. By Parcel Post 15c additional.

Trees Around The Home Give Refreshing Shade In Summer, Reduce Heating Costs In Winter.

"Will Grow" Hardy Ornamental Shrubs

The hardy shrubs offer a constant change of scene that is always pleasing.

They may be used in many ways to beautify the lawn and garden where permanent plants are desired, producing very attractive, lasting effects for a little outlay of money.

With little attention they grow and flower in their new location for years. By planting assorted varieties an interesting succession of flowers may be had from frost to frost.

AMELANCHIER canadensis, 10-12 ft.

Downy Shadblow*

Its numerous white flowers make this a conspicuous plant among the leafless trees of early Spring. Maroon-purple berries, relished by birds.
1½-2 ft. ----- \$ 0.85

ARALIA pentaphyllum (acanthopanax)

6-8 ft. Five-Leaved Angelica*

Arching, spiny branches densely and brightly leaved to base; tolerates dust, smoke and shade.
3-4 ft. ----- \$ 1.00

CHOKEBERRIES

ARONIA brilliantissima, 6-8 ft.

Brilliant Red Chokeberry*

White flowers in May; very attractive in Fall for bright red berries and reddish, yellow foliage.
1½-2 ft. ----- \$ 0.60

A. melanocarpa, 6-8 ft.

Black Chokeberry*

Flowers, fruit and foliage all are attractive. The white flowers in small terminal corymbs appear in May followed by clusters of shining, black berries loved by the birds. The dense, clean foliage turns yellow or red in Autumn.
1½-2 ft. ----- \$ 0.60

* Denotes Varieties Thriving in Part Shade.
Figures following botanical names indicate heights at full maturity.

AZALEAS

(Also see Evergreen Azaleas listed under Broad-Leaved Evergreen Shrubs, Page 16).

AZALEA calendulacea, 4-5 ft.

Flame Azalea*

Brilliant flowers about two inches across in flaming colors ranging from salmon to golden orange, appearing early Spring. Most beautiful.

2½-3 ft. clumps, well-branched, B.&B. ---- \$ 5.00
3-4 ft. clumps, well-branched, B.&B. ---- 6.00

A. canadensis, 4-5 ft.

Piedmont Azalea*

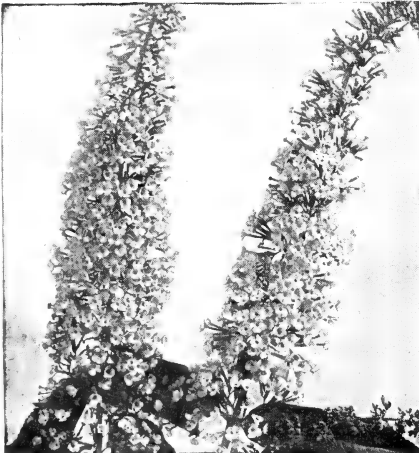
Rosy-pink, fragrant; early. Sometimes called "Fragrant Mountain Azalea."
3-4 ft. clumps, well-branched, B.&B. ----- \$ 6.00

CALLICARPA purpurea, 3-4 ft.

Chinese Beauty Fruit

Valued for lilac-violet berries which crowd branches after leaves have fallen when this is a very unusual and attractive shrub.
1½-2 ft. ----- \$ 0.50 3-4 ft. ----- \$ 0.75

The Popular Buddleias, or Butterfly Bushes



ILE DE FRANCE—BUDDLEIA

BUDDLEIA magnifica, 5-6 ft.

Butterfly Bush or Summer Lilac

Spikes of lavender flowers. July to Autumn.
2 yr. plants ----- \$ 0.50

B. "Charming", 5-6 ft.

Lovely long sprays of lavender-pink blooms, which compared with other Buddleias are distinctly pink.
2 yr. plants ----- \$ 0.50

B. hartwegi, 5-6 ft.

A Buddleia of superior hardiness. Large, bright, lavender flowers, opening from tip downwards.
2 yr. plants ----- \$ 0.50

B. Ile de France, 5-6 ft.

Rich claret-purple spikes lasting well when cut; fragrant; prolific.
2 yr. plants ----- \$ 0.50

(Any 3 of above Buddleias \$1.35)

Two Fine New Buddleias

B. "Dubonnet", 5-6 ft.

New, outstanding, reddish-purple variety.
2 yr. plants ----- \$ 0.60

B. "Royal Red", 4-6 ft.

(Pat. applied for)

First truly red Butterfly Bush. Unsurpassed in beauty and usefulness as summer cut flower or as ornamental lawn shrub. Its rich, dazzling-red panicles attract instant attention.
From pots ----- 75c each; 3 for \$2.00

SHRUBS BY PARCEL POST

Shrubs up to 3 ft. not B. & B. can be sent by parcel post, provided 20c is added for special packing and postage on first Shrub, 10c for each additional Shrub. 25c minimum charge.

For Privet add 20 per cent of value to cover packing and postage—25c minimum charge.

B. & B. FOR LATE PLANTING

After Shrubs have started growth in the Spring (about May 1st), planting can still be continued if plants are dug with ball of earth and burlapped. For this extra service there is an additional charge of 20c to 35c per plant, unless quoted B. & B.

CALYCANTHUS floridus, 4-5 ft.
Sweetshrub or Strawberry Shrub*
Reddish-brown, heavily scented flowers, spring and summer. Also known as Carolina alspice.
2-3 ft. ----- \$ 0.75

CARAGANA arborescens, 10-12 ft.
Siberian Pea tree
Numerous "pea-like," pale yellow flowers cover this plant in May. The small pea-shaped seed-pods 1½-2 inches long and fine textural bright green foliage effect are most distinctive.
1½-2 ft. ----- \$ 0.55

CARYOPTERIS incana, 2-3 ft. Blue Beard
Violet-blue flower clusters in September.
15-18 in., 2 yr. pot plants ----- \$ 0.65

CLETHRA alnifolia, 4-5 ft. Summersweet*
Fragrant, white flower spikes terminating upright branches. July. (Sweet Pepperbush).
1½-2 ft. ----- \$ 0.75

Barberry and Privet --- Leading Hedge Plants

BARBERRY

BERBERIS koreana, 5-6 ft. Korean Barberry*
Upright shrub with bright green, rounded leaves turning red in Autumn. Red fruits long persisting.
12-18 in. ----- \$ 0.60

B. thunbergi, 4-5 ft. Green Barberry*
The best "all purpose" plant. In Fall has brilliantly colored foliage and many scarlet berries.
Ea. 10 100
12-15 in., 2-yr. seedlings --- \$0.25 \$1.50 \$12.00
15-18 in., 3-yr. heavy
transplants ----- .30 2.00 16.00
1½-2 ft., 3-yr. heavy
transplants ----- .35 2.75 22.50
2-2½ ft., 3-yr. heavy
transplants ----- .50 3.50 30.00

B. t. atropurpurea, 4-5 ft.
Red-Leaved Barberry
Foliage rich bronze-red Spring to Autumn; should have sunny situation.
Ea. 10 100
15-18 in., bushy plants ----- \$0.35 \$3.00 \$25.00
1½-2 ft., bushy plants ----- .40 3.50 30.00

B. t. pluriflora erecta, 3-4 ft.
Truchedge Columberry
(Patented.) Dense, columnar habit. Has the beautiful Autumn coloring and bright red berries of Barberry with the rich beauty and erect full growth of Boxwood.
Ea. Per 5 Per 25 Per 100
15-18 in. ----- \$0.37 \$1.45 \$6.00 \$21.00
1½-2 ft. ----- .40 1.60 6.75 24.00

PRIVET

LIGUSTRUM amurense, 12-15 ft.
Amur Privet*
Hardy northern-grown type; dark foliage.
Ea. 10 100
1½-2 ft. ----- \$0.20 \$1.20 \$10.00
2 -3 ft. ----- .30 1.80 12.00



BARBERRY HEDGE

L. ibota, 8-10 ft. Ibota Privet*
Remarkably sturdy and cold resistant; lustrous foliage turning purplish in Fall.
Ea. 10 100
2-3 ft. ----- \$0.35 \$2.50 \$20.00
3-4 ft. ----- .55 4.50 35.00

L. i. regelianum, 5-6 ft. Regal Privet*
Dense shrub, with low, horizontal branches; fragrant white flowers in June; attractive black berries. Splendid in foundation plantings.
Ea. 10 100
12-18 in. ----- \$0.35 \$2.75 \$20.00
1½-2 ft. ----- .60 5.00 40.00
2 -3 ft. ----- .85 7.00 55.00

L. ovalifolium, 12-15 ft. California Privet*
The most generally used hedge plant. Space six inches apart for a dense, full-to-the-ground hedge.
Ea. 10 100
1½-2 ft. ----- \$0.75 \$6.00
2 -3 ft., 2-year ----- .85 8.00

25 or More Barberry or Privet Sold at 100 Rates; 250 or More at 1000 Rates

BUSH DOGWOODS

CORNUS alternifolia, 12-15 ft.

Pagoda Dogwood*

Creamy-white flowers in May, becoming quite attractive in Autumn for its bluish-black fruits on strikingly colored red stems. Branches in tiers. Good for naturalistic planting or in the shrubby border.

3-4 ft. ----- \$ 1.50

C. paniculata, 10-12 ft.

Gray Dogwood*

Large, spreading shrub with regular outline; long, narrow, tapering leaves; many creamy-white, flat flower clusters on red stems in May; fruits pale blue, liked by birds. Good for filler or massing.

2-3 ft. ----- \$ 0.70 3-4 ft. ----- \$ 0.90

C. stolonifera, 6-8 ft.

Red-Osier Dogwood

Valued for Winter effect of its blood-red branches. Very effective in planting banks. White flowers in May followed by white fruits in Autumn.

2-3 ft. ----- \$ 0.65 3-4 ft. ----- \$ 0.75

C. stolonifera lutea, 6-8 ft.

Goldentwig Dogwood*

Bright yellow bark, flowers creamy.

2-3 ft. ----- \$ 0.75 3-4 ft. ----- \$ 1.00

COTONEASTER divaricata, 5-6 ft.

Spreading Cotoneaster*

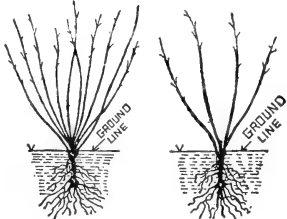
Arching branches loaded in September with bright red fruit; leaves brilliant in Autumn.

1½-2 ft., B. & B. ----- \$ 1.00

2-3 ft., B. & B. ----- 1.40

3-4 ft., B. & B. ----- 1.50

**How To Plant and Prune
Ornamental Shrubs**



Before Pruning

After Pruning

Remove about one-third of top growth of shrub at planting time if Spring planted, or following Spring, if Fall planted, to facilitate establishment of plant. Thereafter, pruning should be done to remove old wood and keep plant to size desired. Cut off damaged or frayed roots just above the point affected. Be careful not to have roots exposed to air or sun at any time.

The important point in planting is to have the hole large enough to accommodate the roots without crowding, and to get the soil well worked in among the roots. Space the larger growing Shrubs 4-5 ft. apart, medium growers 3-4 ft., low growers, 2-3 ft.

Always water abundantly and apply a mulch. A basin-shaped depression should remain around each plant to hold the water, at least the first summer.

C. francheti, 5-6 ft. Franchet Cotoneaster

Gracefully arching branches, bearing large clusters of brilliant, orange fruits, persisting the greater part of the Winter, makes this a highly decorative plant; valued in landscape planting.

1½-2 ft. (Potted) ----- \$ 1.20

CYDONIA japonica, 4-5 ft. Flowering Quince

Masses of scarlet flowers hug leafless branches in April. Sometimes called "Fire Bush."

1½-2 ft. ----- \$ 0.75 2-3 ft. ----- \$ 1.00

C. maulei, 3-4 ft. Dwarf Flowering Quince

Variety of dwarf habit. Flowers bright orange-apricot; a color usually found only in Roses.

1½-2 ft. ----- \$ 1.00

DEUTZIAS

DEUTZIA gracilis, 2-3 ft. Slender Deutzia*

White flowers in graceful, upright clusters in May. Graceful bushy form.

1½-2 ft. ----- \$ 0.75

D. g. rosea, 2-3 ft. Pink Slender Deutzia*

Pink form of preceding. Thrifty grower.

1½-2 ft. ----- \$ 0.75

D. lemoinei, 4-5 ft. Lemoine Deutzia*

Large, dazzling white flowers in great abundance; June. Very satisfactory for general planting.

12-18 in. ----- \$ 0.55 1½-2 ft. ----- \$ 0.60

D. scabra candidissima, 8-10 ft. Snowflake Deutzia*

Erect clusters of purest white, double flowers, borne in profusion in June.

1½-2 ft. ----- \$ 0.60 3-4 ft. ----- \$ 0.75

D. s. crenata, 6-8 ft. Double Pink Deutzia

Double, light pink flowers, June, in profusion.

3-4 ft. ----- \$ 0.75

ELAEAGNUS longipes, 6-8 ft. Cherry Eleagnus

Loves hot, sunny place. Fragrant, yellow flowers; decorative orange-red fruits attract birds.

2-3 ft. ----- \$ 1.00 3-4 ft. ----- \$ 1.50

ENKIANTHUS campanulatus, 8-10 ft. Redvein Enkianthus

Yellowish or pale orange, veined darker red, gracefully drooping flowers in racemes; brilliant red autumn foliage. Much used as accent in foundation plantings.

1½-2 ft., B.&B. ----- \$ 2.00 2-2½ ft., B.&B. ----- \$ 3.00

EUONYMUS alatus, 6-8 ft. (Burning Bush) Winged Euonymus*

In the Fall its foliage is a brilliant rose. Corky-winged branches; small, red fruits. A very striking plant, too little used.

1½-2 ft. ----- \$ 1.00 3-4 ft. ----- \$ 2.00

2-3 ft. ----- 1.20 4-5 ft. ----- 3.00

E. a. compactum, 4-5 ft. Dwarf Winged Euonymus*

Compact, symmetrical, slow growing form of the preceding. Very highly colored Autumn foliage. Splendid specimen plant, or useful as a hedge.

12-18 in. ----- \$ 0.75 2-3 ft. ----- \$ 1.50

E. americanus, 8-10 ft. Brook Euonymus*

Conspicuous in Fall for pink capsules which split open, revealing orange berries.

2-3 ft. ----- \$ 0.75

EXOCHORDA grandiflora, 6-8 ft. Pearlbush

Pearl-like, dazzling white, globular flowers in six to ten flowered racemes. April-May.

4-5 ft. ----- \$ 1.50

FORSYTHIA (Golden Bells)**FORSYTHIA intermedia spectabilis, 5-7 ft.****(Golden Bell) Showy Border Forsythia***

Showiest of Golden Bells; opens late enough to escape injury by frost. Most profuse blooming, large flowers. An indispensable plant.

2-3 ft. ----- \$ 0.60 3-4 ft. ----- \$ 0.75
4-5 ft. ----- \$ 0.90

F. ovata, 5-6 ft.**Korean Forsythia***

From Northern Korea, harder than other Golden Bells. Has ascending branches, arching gracefully, clothed with amber-yellow flowers, produced ten days earlier than other sorts.

2-3 ft. ----- \$ 0.75 3-4 ft. ----- \$ 1.25

F. suspensa, 4-6 ft.**Weeping Forsythia***

Long, drooping branches; bright yellow flowers, very early. Suitable for covering banks.

2-3 ft. ----- \$ 0.60 3-4 ft. ----- \$ 0.90

F. s. fortunei, 6-8 ft.**Fortune Forsythia***

Finely arching branches, covered with rich yellow flowers. Valued for foliage effect, too.

2-3 ft. ----- \$ 0.60 3-4 ft. ----- \$ 0.75

HAMAMELIS vernalis, 4-6 ft.**Vernal Witch-hazel***

As early as January the not showy, but sweetly fragrant, pale yellow flowers mature, to open and close with warm and cold periods into Spring. Stocky and upright growing. Good for massing.

1½-2 ft. ----- \$ 0.75

H. virginiana, 10-12 ft.**Witch Hazel***

Yellow flowers as late as October and November. Excellent as a background shrub.

3-4 ft. ----- \$ 1.50

HIBISCUS syriacus, 10-12 ft.**Shrub Althea or Rose of Sharon**

Hollyhock-like flowers in August-September. Red, lavender, white. State color desired.

2-3 ft. ----- \$ 0.60

HYDRANGEAS**HYDRANGEA arborescens grand., 4-5 ft.****Snowhill***

Upright branched shrub with pure white flowers like big snow-balls, June-September.

1½-2 ft. ----- \$ 0.60 2-3 ft. ----- \$ 0.75

H. opuloides acuminata, 2-3 ft.**French Hydrangea**

Blue or pink flowers in immense clusters. For blue flowers plant in acid soil. Strong pot grown plants, \$1.25.

H. paniculata grand., 8-10 ft.**Peegee Hydrangea**

Immense cone-shaped heads of white flowers turning pink and bronze, September-October.

1½-2 ft. ----- \$ 0.60 2-3 ft. ----- \$ 0.75

H. quercifolia, 3-4 ft.**Oakleaf Hydrangea***

Leaves oak-like, beautifully colored in the Fall. Flowers pinkish-white, turning purplish, borne in narrow, upright clusters in June.

15-18 in. ----- \$ 0.75

HYPERICUM aureum, 3-4 ft.**Golden St. Johnswort***

Brilliant yellow, double flowers July and August; blue-green foliage. Good for vacant corners.

1½-2 ft. ----- \$ 0.60



PEEGEE HYDRANGEA

ILEX verticillata, 6-8 ft.**Winterberry or Black Alder**

Bright red fruits conspicuous until mid-winter. Plant in groups for berries—it's a Holly. Much used in early Winter decoration.

15-18 in. ----- \$ 0.60 1½-2 ft. ----- \$ 1.00

JASMINUM nudiflorum, 2-3 ft.**Winter Jasmine**

Golden yellow flowers before the leaves. Very first shrub to bloom in the Spring. Very graceful and free flowering.

1½-2 ft. ----- \$ 0.75

KERRIA japonica (Corchorus), 4-5 ft.**(Globe Flower) Kerria***

June to September profusion of rich-yellow flowers with numerous stamens. Green branches make Winter show. A popular plant.

1½-2 ft. ----- \$ 1.00

KOLKWITZIA amabilis, 5-7 ft. Beauty Bush*

Fountain-like mass of pink bloom in May. A graceful, hardy shrub of deserved popularity.

2-3 ft. ----- \$ 1.00 3-4 ft. ----- \$ 1.40

LESPEDEZA formosa (penduliflorum) 6-8 ft.**(Desmodium) Purple Bushclover**

Attractive herbaceous shrub with graceful arching branches, and pretty, clover-like leaves. Profusion of rosy-purple, pea-shaped flowers in panicles, August-September. Prune to ground early each Spring.

4 yr. ----- \$ 0.75

LIGUSTRUM—See Page 29

HEAVY, BUSHY PLANTS

Bushiness is better indication of value than height alone. Barr's "Will Grow" Shrubs are especially well branched, heavy, bushy plants.

Barr's has priced its certified "Will Grow" plants so low that ordinary plants are dear in comparison. It pays to buy the immediate effect produced by Barr's "Will Grow" plants—you have no waiting for results.



VIRGINIAN MOCK ORANGE

HONEYSUCKLE BUSHES

- LONICERA bella albida, 6-8 ft.** **White Bell Honeysuckle**
 White flowers in May followed by red fruits.
 3-4 ft. ----- \$ 0.70
- L. fragrantissima, 6-8 ft.** **Winter Honeysuckle***
 Small, creamy-white, very fragrant flowers in March; red fruits. Semi-evergreen. Wide growing.
 1½-2 ft. ----- \$ 0.60 2-3 ft. ----- \$ 0.75
 3-4 ft. ----- \$ 0.80
- L. maackii podocarpa, 6-8 ft.** **Late Amur Honeysuckle**
 Vigorous habit. White flowers in May followed by brilliant red fruits in late Fall and Winter.
 4-5 ft. ----- \$ 1.40
- L. morrowii, 6-8 ft.** **Morrow Honeysuckle***
 White flowers May and June; translucent, blood-red berries, July-August. Wide growing.
 1½-2 ft. ----- \$ 0.60 2-3 ft. ----- \$ 0.70
- L. ruprechtiana, 8-10 ft.** **Manchurian Honeysuckle**
 Pinkish-white flowers, May and June; abundance of bright red fruit in Autumn.
 2-3 ft. ----- \$ 0.60 3-4 ft. ----- \$ 0.75
 4-5 ft. ----- \$ 0.85
- L. syringantha, 4-5 ft.** **Lilac Honeysuckle**
 Fragrant, lilac-rose flowers in May; scarlet fruits in August. Upright, irregular branches, with smooth, bluish-green leaves.
 1½-2 ft. ----- \$ 0.75
- L. tatarica rosea, 8-10 ft.** **Pink Tatarian Honeysuckle***
 Pink flowers, May-June; attractive red fruit.
 2-3 ft. ----- \$ 0.65 3-4 ft. ----- \$ 0.75

- L. t. rubra, 8-10 ft.** **Red Tatarian Honeysuckle***
 Bright red flowers May-June; attractive red fruit in early Fall.
 2-3 ft. ----- \$ 0.65 3-4 ft. ----- \$ 0.75
- L. zabelii, 6-8 ft.** **Zabel Honeysuckle**
 Saffron-pink flowers with abundance of orange-red fruits July and August which are cherished by birds. One of the best Bush Honeysuckles.
 1½-2 ft. ----- \$ 0.75 3-4 ft. ----- \$ 0.90

- MYRICA carolinensis (cerifera), 3-4 ft.** **Northern Bayberry**
 Winter-decorative, wax-coated, gray berries attractive amidst dark green, glossy, fragrant leaves, which turn purplish-bronze.
 2-2½ ft., B. & B. ----- \$ 1.50
 3-4 ft., B. & B. specimens ----- 3.00

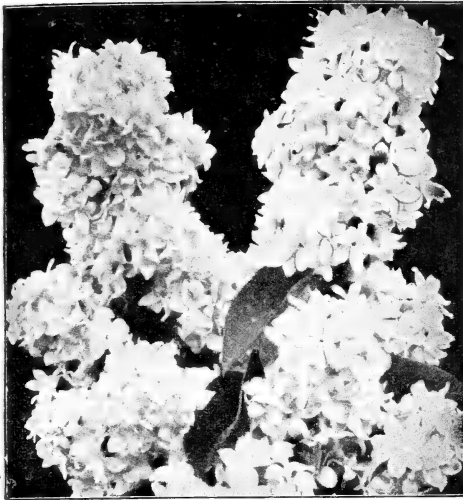
MOCK ORANGES

- PHILADELPHUS coronarius, 8-10 ft.** **Sweet Mock Orange***
 Pure white, delightfully fragrant flowers in abundance. May-June.
 2-3 ft. ----- \$ 0.60 3-4 ft. ----- \$ 0.75
- P. grandiflorus, 6-8 ft.** **Big Scentless Mock Orange***
 Flowers four-cornered, two inches across, June; scentless. Most vigorous of the species.
 2-3 ft. ----- \$ 0.60 4-5 ft. ----- \$ 0.75
- P. lemoinei, 5-7 ft.** **Lemoine Mock Orange***
 Flowers fragrant, in great profusion. Dwarf, graceful habit. Beautifully symmetrical plant.
 1½-2 ft. ----- \$ 0.60 3-4 ft. ----- \$ 0.80
- P. virginalis, 6-8 ft.** **Virginial Mock Orange**
 Large, sweet, double, pure white flowers in May and June and intervals throughout Summer. Very striking and best of the Mock Oranges.
 1½-2 ft. ----- \$ 0.75 2-3 ft. ----- \$ 0.80



FLOWERING ALMOND

"Will Grow" Shrubs Have That Dense Root System So Necessary For Success in Planting



THE EVER-POPULAR LILAC

(See page 34 for list of varieties and prices)

PHOTINIA villosa, 10-12 ft.

Chinese Christmas Berry

A plant with a three-fold value: White flowers in May; bold, brilliant red foliage in Autumn, and many small, red fruits, persisting until Winter.
3-4 ft. ----- \$ 1.20 4-5 ft. ----- \$ 1.50

PRUNUS (amygdalus) glandulosa alba, fl. pl., 5-7 ft. Double White Flowering Almond

White, fully double flowers crowd the bare branches in early Spring; very picturesque.
1½-2 ft. ----- \$ 0.75

P. rosea, fl. pl., 5-7 ft.

Double Pink Flowering Almond

Very attractive pink form of preceding.
1½-2 ft. ----- \$ 0.75

P. tomentosa, 6-7 ft.

Nanking Cherry

Abundant, pinkish-white flowers in April followed in June by showy, cherry-like fruits. Good foliage effect all season.
3-4 ft. ----- \$ 1.20

RHODOTYPOS herrioides, 4-5 ft. Jetbead*

White flowers in May followed by conspicuous, black bead-like fruits. Will grow satisfactorily in shady or sunny situations, or in poor soil.
15-18 in. ----- \$ 0.60 2-3 ft. ----- \$ 0.80

RHUS cotinus, 10-12 ft.

Smoke Tree (Purple Fringe)

Enveloped by large, plummy masses of green or purple flower stems in mid-summer, giving a smoky appearance. Makes effective display.
3-4 ft. ----- \$ 2.00

ROBINIA hispida, 6-8 ft.

Rose Acacia

Drooping clusters of rose-pink, pea-shaped flowers, May-June. Valuable for preventing washes on sandy banks. Excellent specimen plant, too.
3-4 ft. ----- \$ 0.85

ROSA hugonis, 5-6 ft.

Hugonis Rose (Golden Rose of China)

Long garlands of dainty, yellow flowers in May, followed by translucent red fruits.
2-3 ft. ----- \$ 1.00 3-4 ft. ----- \$ 1.25

R. rugosa, 4-5 ft.

Rugosa Rose

Large, white or red flowers, followed by handsome, scarlet-crimson fruits.
1½-2 ft. ----- \$ 0.75 2-3 ft. ----- \$ 0.85

SORBARIA sorbifolia, 3-4 ft.

Ural False-Spirea

White flowers in large, terminal spikes, July-August. A dwarf bushy shrub with long, compound leaves. Good for planting steep banks.
2-3 ft. ----- \$ 0.75

SPIREAS

SPIREA albiflora (callosa alba), 3-4 ft.

Showy Spirea

Dwarf, upright shrub bearing numerous flat clusters of white flowers, June-July; foliage bluish-green. Good in masses.
1½-2 ft. ----- \$ 0.75

S. arguta, 4-5 ft.

Garland Spirea*

Profusion of white flowers in April on slender, drooping branches; feathery foliage.
2-3 ft. ----- \$ 0.65 3-4 ft. ----- \$ 0.75

S. billardi, 5-6 ft.

Billiard Spirea*

Brilliant rose flowers in dense, plummy spikes. July-August. Good for naturalistic effects.
3-4 ft. ----- \$ 0.75

S. bumalda anthony waterer, 2-3 ft.

Anthony Waterer Spirea

Rosy-crimson flowers in flat-topped, terminal clusters, June to frost. Good plant for flowering hedge. Very dwarf.
12-15 in. ----- \$ 0.50 1½-2 ft. ----- \$ 0.75

S. froebeli, 3-4 ft.

Froebel Spirea

Like Anthony Waterer except earlier and taller. Excellent foreground shrub for Summer flowering effect on the home grounds.
1½-2 ft. ----- \$ 0.55 2-2½ ft. ----- \$ 0.65
2½-3 ft. ----- \$ 0.90

S. prunifolia, fl. pl., 6-8 ft.

Bridal Wreath

White, fully double, small button-like flowers, on slender, upright branches. April-May.
2-3 ft. ----- \$ 0.90

S. thunbergi, 4-5 ft.

Thunberg Spirea

Profusion of small, white flowers on arching branches; first of the Spireas to bloom. Foliage beautiful orange and scarlet in Fall.
3-4 ft. ----- \$ 0.75

S. trichocarpa, 5-6 ft.

Korean Spirea*

Graceful arching form like Van Houtte Spirea, but the profusely borne flowers are larger and two weeks later. Very good.
2-3 ft. ----- \$ 0.65 3-4 ft. ----- \$ 0.75

S. van houttei, 6-8 ft.

Van Houtte Spirea*

Graceful, arching branches wreathed in May-June with a profusion of pure white flowers.
2-3 ft. ----- \$ 0.50 3-4 ft. ----- \$ 0.65

STEPHANANDRA flexuosa, 5-6 ft.

Cutleaf Stephanandra*

Graceful, spreading shrub; small, white flowers in clusters, June-July; dainty leaves, brilliant red in Autumn. A useful filler.
2-3 ft. ----- \$ 0.65

PLANT SYMPHORICARPOS FOR ATTRACTIVE BERRIES

- SYMPHORICARPOS chenaulti*, 5-6 ft.**
Chenault Coralberry*
 Bunches of coral-red fruits remaining until mid-winter. An improved type of Coralberry.
 1½-2 ft. ----- \$ 0.50 2-3 ft. ----- \$ 0.60
- S. racemosus*, 5-6 ft.** **Snowberry***
 Showy, waxy, white berries weigh down the willow branches in Autumn.
 1½-2 ft. ----- \$ 0.50 2-3 ft. ----- \$ 0.60
- S. vulgaris*, 4-5 ft.** **Coralberry***
 Purplish-red berries in clusters lining long slender branches Autumn and Winter. Good on steep banks. ("Indian Currant").
 1½-2 ft. ----- \$ 0.50 2-3 ft. ----- \$ 0.60

YOU'LL WANT SOME LILACS FOR THEIR ENTICING FRAGRANCE

- SYRINGA chinensis (rothomagensis)*, 8-9 ft.**
Chinese Lilac
 Fragrant, reddish-purple flowers in large, open heads in May. Superior to the Common Lilac in gracefulness of branches, in the color, texture and density of its foliage, and just as free flowering.
 2-3 ft. ----- \$ 0.90 3-4 ft., B. & B. _ \$ 1.25
- S. persica*, 5-8 ft.** **Persian Lilac**
 Slender, arching branches, bearing fragrant pale-lilac flowers in loose, broad panicles, appearing after the Common Lilac. Use where a lower growing, finer textured Lilac is most suitable.
 2-3 ft. ----- \$ 0.90 3-4 ft. ----- \$ 1.50
- S. vulgaris*, 10-12 ft.** **Common Lilac**
 Fragrant, purplish flowers in May, in large, double clusters. Always greatly cherished.
 2-3 ft. ----- \$ 0.75 4-5 ft. ----- \$ 1.50
 5-6 ft. ----- \$ 2.00
- S. v. alba*, 10-12 ft.** **White Lilac**
 Pure white form of preceding. Very fragrant.
 3-4 ft. ----- \$ 1.50

NAMED VARIETIES OF FRENCH LILACS

Perfected flower types in color, form and size. Excellent for cut flowers. We can furnish the different varieties only in the sizes indicated.

- Alphonse Lavallee**, double, violet-blue, 2-3 ft.; 6-7 ft.
- Charles Joly**, semi-double, red mauve, 2-3 ft.; 3-4 ft.; 6-7 ft.
- Congo**, single, deep red-purple, 2-3 ft.
- Marie Legrave**, single, white, 2-3 ft.; 3-4 ft.
- Michael Buchner**, double, pinkish lilac, 2-3 ft.; 6-7 ft.
- Mme. Lemoine**, double, white, 2-3 ft.; 3-4 ft.; 5-6 ft.
- William Robinson**, double, pinkish violet, 2-3 ft.; 3-4 ft.; 6-7 ft.

Prices of Above Varieties Your Selection

	Each
2-3 ft., bushy plants -----	\$ 1.25
3-4 ft., bushy plants, B. & B. -----	2.00
4-5 ft., extra bushy specimens, B. & B. ----	2.50
5-6 ft., extra bushy specimens, B. & B. ----	3.50
6-7 ft., extra bushy specimens, B. & B. ----	5.00



COMMON SNOWBALL or GUELDER ROSE

- TAMARIX africana*, 12-15 ft.**
African Tamarix
 Mass of airy, pink flowers, April-May; fine, graceful foliage. Produces a dainty, attractive effect in masses, also very useful as a specimen plant on the lawn. A very interesting plant.
 4-5 ft. ----- \$ 0.75

VIBURNUMS

- VIBURNUM carlesi*, 3-4 ft.** **Fragrant Viburnum**
 Lovely pink, fragrant flowers in dense clusters 2-3 in. in diameter, early April; blue black berries.
 12-15 in. ----- \$ 1.00
 15-18 in. ----- 1.50
 1½-2 ft., B. & B. ----- 2.00
 2 -3 ft., B. & B. ----- 2.75
- V. dentatum*, 10-12 ft.** **Arrowwood***
 White flower heads, May-June; dark blue berries, bronze leaves in Autumn.
 3-4 ft. ----- \$ 0.90
- V. dilatatum*, 8-10 ft.** **Linden Viburnum**
 Attractive, spreading shrub, creamy-white flowers in six-inch clusters; abundant, glittering red fruits in September, long persisting.
 2-3 ft. ----- \$ 1.00 3-4 ft. ----- \$ 1.25
- V. lantana*, 15-18 ft.** **Wayfaring-tree**
 Flowers white in flat-topped clusters, June; fruit clusters bright red in Summer, turning black later.
 3-4 ft. ----- \$ 0.90 4-5 ft. ----- \$ 1.50

"Will Grow" Shrubs Are Worth More Than Ordinary Plants—You Get More For Your Money

- V. lentago, 16-20 ft.** Nannyberry*
Fragrant, white flowers, May-June in clusters 4-5 in. across; fruit blue-black, edible.
2-3 ft. ----- \$ 1.50
- V. opulus, 8-10 ft.** European Cranberry Bush
Showy white flower heads May-June; scarlet berries in the Fall. (High Bush Cranberry).
2-3 ft. ----- \$ 1.00 3-4 ft. ----- \$ 1.25
- V. o. sterile, 8-10 ft.** Snowball (Guelder Rose)
Large, snowball-like flowers May-June.
2-3 ft. ----- \$ 0.90
- V. tomentosum, 6-8 ft.** Doublefile Viburnum
Profuse, pure white flowers in large flat clusters, June. Red fruits changing to black.
1½-2 ft. ----- \$ 0.65 2-3 ft. ----- \$ 0.90
- V. t. plicatum, 6-8 ft.** Snowball Bush
Large, round heads, showy white flowers, in abundance in June; dark green, crimped foliage.
1½-2 ft. ----- \$ 0.75 2-3 ft. ----- \$ 1.00
3-4 ft. ----- \$ 1.50

- VITEX agnus-castus, 5-6 ft.**
(Monk's Pepper Tree) Lilac Chaste-tree
Dense clusters of fragrant, lilac flowers, in spikes 6 to 10 inches long, July-September. Strong growing; gray-green, star-shaped, aromatic foliage.
2-3 ft. ----- \$ 0.75
- V. macrophyllus, 4-5 ft.** Chaste-tree
Very graceful, attractive plant; pretty lavender-blue flower spikes 6 to 10 in. long, July to frost.
2-3 ft. ----- \$ 0.75

WEIGELAS

Weigelas are one of our most attractive and widely used shrubs. Given plenty of room they become covered with large, bell or trumpet-shaped flowers. Well adapted to use in groups on the open lawn or for filling a vacant corner where there is plenty of sunshine.

- WEIGELA abel carriere, 6-8 ft.**
Abel Carriere Weigela
Beautiful rose-carmine flowers on broad-growing bush, blooming all Summer.
1½-2 ft. ----- \$ 0.60
- W. Eva Rathke, 5-6 ft.**
Hybrid Carmine Weigela
Fragrant, carmine-red, tubular flowers, June-July; free bloomer and very popular.
1½-2 ft. ----- \$ 0.75 2-3 ft. ----- \$ 0.85
- W. floribunda, 6-7 ft.** Crimson Weigela
Tubular dark crimson, fragrant flowers in abundance, in June. Medium spreading habit.
2-3 ft. ----- \$ 0.60 3-4 ft. ----- \$ 0.75
- W. rosea, 6-8 ft.** Pink Weigela
Attractive flowers, deep rose outside, paler within; May and June. Very free flowering.
2-3 ft. ----- \$ 0.60

- ZANTHORHIZA apiifolia, 1-2 ft.** Yellowroot*
Thrives in dry, shaded situations under trees, making an excellent groundcover, especially on banks. Its interesting, compound leaves unfold with the opening of the inconspicuous, terminal, drooping, purplish flowers.
8-10 in. ----- \$ 0.40 10-12 in. ----- \$ 0.50

GARDEN FOR VICTORY

Hon. Claude R. Wickard, Secretary, U. S. Department of Agriculture, at the National Victory Garden Conference, said: "I know there is a tremendous psychological value in having things for people to do in war time. Gardening is one activity that has great possibilities as a useful outlet for that urge to do something. There's a spiritual uplift in seeing things grow."

Richard Wright, editor of House and Garden, on the same occasion expressed a great truth when he said: "It is as necessary for the maintenance of morale to grow flowers as it is necessary to supply the body with fresh vegetables—a rose, an iris, a pcony may do more for us in hours of stress, worry, and doubt than a bushel of parsnips or a ton of dehydrated carrots."

It would be well to devote our gardening enthusiasm and energies to the growing of Ornamental Shrubs, Trees and Flowers, thereby doing our bit for the morale of our civilian population, and rendering a valuable service in improving the appearance of our communities.



THE WEIGELA

Vines And Creepers Solve Varied Planting Problems



SWEET AUTUMN CLEMATIS

Vines For Special Purposes

For Clinging to Walls and Other Surfaces. Ampelopsis, Euonymus, Ivy, Trumpet creeper.

For Porches and Pergolas. Clematis, Dutchman's Pipe, Honeysuckle, Climbing Rose, Wisteria.

For Trellises or Lattices. Bittersweet, Clematis, Dutchman's Pipe, Honeysuckle, Matrimony Vine, Trumpet Vine, Wisteria.

For Solid Screen Effects. Ampelopsis, Dutchman's Pipe, Honeysuckle.

For Banks and Slopes. Bittersweet, Euonymus, Ivy, Lonicera, Matrimony Vine.

For Flowers. Trumpet Vine, Clematis, Honeysuckle, Climbing Rose, Wisteria.

* Indicates will thrive in shade.

BOSTON IVY

AMPELOPSIS tricuspidata (veitchii)

BOSTON IVY (*)
Rapid growing; clings firmly by disc attachments. For walls and screen effects. Strong 2 year plants, 50c ea.; \$4.50 per doz.

ARISTOLOCHIA siph DUTCHMAN'S-PIPE
Hardy, vigorous vine with curious, miniature, brownish pipe-like flowers May-June. Its large round leaves give a tropical effect. Good for screens. 2 yr. potted plants, \$1.00.

BIGNONIA radicans TRUMPET CREEPER
Large, brilliant orange-scarlet, trumpet-shaped flowers, July and August. For walls, trellises and arbors, banks and slopes. Strong 2 year plants, 50c ea.; \$5.00 per doz.

CELASTRUS orbiculatus
ORIENTAL BITTERSWEET (*)
Very ornamental with its branches hanging full of dark orange berries, which split open to show crimson, persistent fruits. Can be cut and dried for Winter decorations. 2-3 ft., 45c ea.

CLEMATIS

Plant crowns 4-5 inches below surface, roots straight down. Clematis requires a well-drained soil, partially shaded, or a mulch for the roots if planted in a sunny location. Provide support for the vine at once with a stake or other means of support. Because of difficulty of getting Clematis started free replacements cannot be allowed. We furnish potted plants, however, for greater assurance of growth.

CLEMATIS jackmani JACKMAN CLEMATIS
Rich, velvety purple flowers; large flowering.

C. henryi HENRY CLEMATIS
Creamy-white; large flowering.

C. Mme. Edouard Andre MADAME ANDRE CLEMATIS
Carmine-violet; large flowering.

C. ramona RAMONA CLEMATIS
Clear sky-blue; large flowering.

PRICE. Any of above Large-flowering Clematis, 2-yr. potted plants, \$1.00 ea.

SMALL FLOWERING CLEMATIS

C. paniculata SWEET AUTUMN CLEMATIS
Enormous masses of star-shaped, white flowers, deliciously fragrant, late Summer to frost. 2-yr. potted plants, 50c ea.; \$4.50 per doz.

EUONYMUS radicans

WINTERCREEPER (Evergreen Bittersweet)
Self-clinging, dense-growing; dull-green, roundish leaves with whitish veins. Excellent for low walls, banks and slopes. Heavy 2-yr. plants, 75c ea.; \$7.50 per doz.

E. r. vegetus BIG-LEAF WINTERCREEPER
Low, trailing evergreen vine with aerial rootlets for clinging. Showy red fruits in great profusion lasting long time. Heavy 2-yr. plants, 75c ea.; \$7.50 per doz.

ENGLISH IVY

Two plants to every pot gives double value to Barr's English Ivies, and assures quicker covering when used as a ground cover.

HEDERA helix ENGLISH IVY (*)
Leaves beautiful waxy, dark green, veined white. Most popular variety.

H. h. cuspidata minor (gracilis) SMALL-LEAF ENGLISH IVY (*)
Leaves rather small with broad short lobes. Ideal ground cover.

PRICE. Any of above English Ivy 2 1/4 in. pots, 18c ea.; \$1.75 per doz.; 4 in. pots 40c ea.; \$4.00 per doz.

LONICERA halliana

HALL CLIMBING HONEYSUCKLE (*)
Flowers open white changing to yellow continuing midsummer to frost; very fragrant. 4 in. pots, 40c ea.; \$4.00 per doz.

LYCIMUM chinense

MATRIMONY VINE (BOX THORN)
Purple star-shaped flowers June to September followed by brilliant orange-red berries. Strong 2-yr. plants, 45c ea.; \$4.50 per doz.

POLYGONUM anberti

CHINA FLEECYVINE (SILVER LACE VINE)
Becomes entirely covered with a great feathery spray of white flowers. August-September. Strong potted plants, 60c ea.; \$6.00 per doz.

WISTERIAS

WISTERIA sinensis CHINESE WISTERIA
Showy, large, blue-violet flowers in dense, pendulous clusters, sometimes a foot long. May.

W. s. alba WHITE WISTERIA
White form of preceding.

PRICE. Either blue or white, 2 yr., heavy field grown, grafted plants, 75c ea.
Since Wisteria grown from seed often will not bloom, ours are grafted to assure bloom.

Vines Have a Unique Way of Adding Beauty and Charm to the Home Grounds

Hardy Perennials are Useful For Many Purposes

From early Spring to late Autumn there are always flowers to enjoy where the hardy Perennials are planted—not only this year but in years to come. Once planted Perennials continue to bloom and increase in value each succeeding year. Avoid planting one of a kind owing to its bizarre effect—always plant 3 or more of a kind.

Key To Uses For Perennials

Most Perennials are adapted to planting in beds or in the shrubbery border, and there are many that are valuable for various purposes such as for Cut Flowers, Ground Covers, Rock Gardens, in the shade, etc. In the descriptions of each variety that follow the letters show their particular merits:

- (B) Bedding or Borders
- (C) Cut Flowers
- (E) Edging Plants
- (G) Ground Covers
- (M) Mass Effects
- (R) Rock Gardens
- (S) Shade Enduring
- (W) Wild Garden Plants

ALTHEA, 6-8 ft.

HOLLYHOCK

Long spikes of single flowers measuring 2 to 3 in. across, on stately, majestic towering plants, July-September. Red, Pink, Yellow. State color desired (B). 30c ea.; 3 for 75c.

ALYSSUM saxatile compactum, 9-12 in.

GOLDENTUFT

Dwarf, shrubby plant, grayish green leaves, mass of brilliant golden yellow flowers. April-May. (BR). 30c ea.; 3 for 75c.

ANCHUSA myosotidiflora, 12-15 in.

SIBERIAN BUGLOSS

Light blue. Tidy, compact habit, the dainty flowers resembling forget-me-nots. April-May. (BERS). 35c ea.; 3 for 85c.

Figures immediately following botanical names show the ultimate height attained by that variety, and is not size furnished. We always supply strong, vigorous plants of best planting size.

ANEMONE japonica alba, 2-3 ft.

WHIRLWIND ANEMONE

Many large, saucer-shaped, white flowers. August-October. (BC). 40c ea.; 3 for \$1.00.

A. Queen Charlotte, 2-3 ft.

Semi-double, silvery-pink. August-October. (BC) 40c ea.; 3 for \$1.00.

ANTHEMIS tinctoria, 1-1 1/4 ft.

YELLOW CAMOMILE (MARGUERITE.) Daisy-like, yellow flowers in great profusion. Sturdy, easily-grown plant; finely cut foliage. July-September. (BCM). 30c ea.; 3 for 75c.

AQUILEGIA caerulea hybrida, 2-3 ft.

LONG SPURRED COLUMBINE

Graceful spurred flowers of various colors; beautifully divided foliage. May-June (BCRS). 35c ea.; 3 for 85c.

ASTERS

ASTEER Beechwood Challenger, 4-5 ft.

Best clear red, with bright yellow center disc. September-October. (BCW). 40c ea.; 3 for \$1.00.

A. frikartii, 2-2 1/4 ft.

(WONDER OF STAEFA)

Sky-blue, single flowers 2 1/2-3 in. across, with 35 to 50 narrow petals; deliciously fragrant. August-October. (BCR). 50c ea.; 3 for \$1.25.

A. Lavender Climax, 4-5 ft.

Lavender-blue. September-October. (BCW). 25c ea.; 3 for 60c.

A. Red Rover, 3-4 ft.

Deep rosy-red with golden center; free blooming; compact habit. A real novelty. September-October. (BCW). 50c ea.; 3 for \$1.25.



ANEMONE JAPONICA



DELPHINIUM



KNIPHOFIA WARIA

Barr's Hardy Perennials Are Fully-Developed Plants—Not Mere, Cheap Seedlings

CAMPANULA medium, 2 ft.

CANTERBURY BELL, Large, lovely, bell-shaped flowers in mixed colors—white, pink, blue, purple. June-July. (BC). 30c ea.; 3 for 75c.

C. carpatica, 9 in.

BLUE CARPATHIAN BELLFLOWER Grows in dense tufts covered with clear blue flowers held erect on wiry stems. June-August. (BCW). 30c ea.; 3 for 75c.

CERATOSTIGMA plumbaginoides, 6-8 in.

LARPENTE PLUMBAGO (LEADWORT) Attractive, spreading plant with beautiful, deep violet-blue flowers borne in abundance. July-October. (BEGR). 35c ea.; 3 for 85c.

CHRYSANTHEMUMS

(For named varieties of Hardy Chrysanthemums see page 7.)

CHRYSANTHEMUM coccineum, 1½-2 ft.

PAINTED LADY (Pyrethrum) Bright colored flowers ranging from deep rich crimson to light pink, borne on long stems. "The Spring Chrysanthemum," June-July. (BC). Mixed colors only. 30c ea.; 3 for 75c.

C. maximum, 1½-2 ft.

SHASTA DAISY Long, snowy-white petals, yellow center. June-October. (BC). 30c ea.; 3 for 75c.

CIMICIFUGA racemosa, 4-5 ft.

SNAKEROOT (Bugbane) Showy, erect, long, white flower spikes with handsome foliage. Especially good for backgrounds. June-August. (BCMSW). 35c ea.; 3 for 85c.

COREOPSIS grandiflora, 2 ft.

BIG COREOPSIS Rich golden-yellow flowers. June-September. (BC). 25c ea.; 3 for 60c.

DELPHINIUM

DELPHINIUM belladonna, 3 ft.

BELLADONNA LARKSPUR Produces numerous spikes of large, single, sky-blue flowers. June-September. (BC). 30c ea.; 3 for 75c.

D. bellamosa, 4 ft.

BELLAMOSA LARKSPUR (Blue Grotto) Many heavy spikes of dark indigo-blue flowers. Continuous bloomer. Resistant to mildew. Better than ordinary Bellamosa. June-September. (BC). 30c ea.; 3 for 75c.

D. Pacific Hybrids, 5-6 ft.

Showy, enormous blooms on impressive tall spikes make these the most beautiful of all Delphiniums. Assorted colors only. June-September. (BC). 50c ea.; 3 for \$1.25.

D. Wrexham Hybrids, 5-6 ft.

HOLLYHOCK LARKSPUR Enormous individual flowers, 1½-2 in. across, in all shades of blue blended with mauve and violet. A tall spire-like plant which is a solid mass of bloom. June-September. (BC). 50c ea.; 3 for \$1.25.

DIANTHUS barbatus, 2 ft.

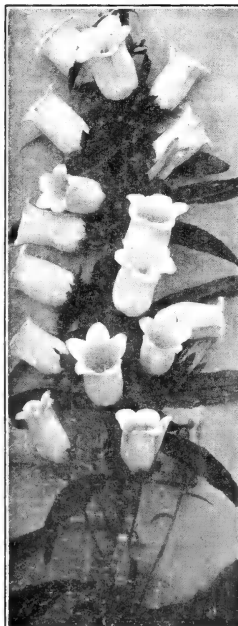
SWEET WILLIAM No garden is complete without this cheerful, sweet-smelling and showy flower with colors ranging from purest white to blackest red. May-July. (BCER). 30c ea.; 3 for 75c.

EUPATORIUM coelestinum, 1½-2 ft.

MIST FLOWER Large flat heads of small, fluffy, azure-blue flowers. Sometimes called Hardy Ageratum. Aug.-Oct. (BCS). 30c ea.; 3 for 75c.

EUPHORBIA corollata, 2-3 ft.

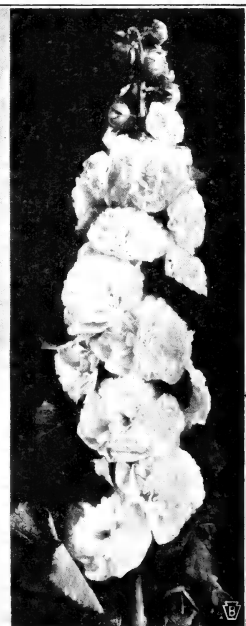
FLOWERING SPURGE White flowers with small green eye, in umbels. July-October. (BC). 35c ea.; 3 for 85c.



CAMPANULA



PAINTED LADY



HOLLYHOCK

Hardy Perennials Give Lots of Pleasure in the Garden Yet They Cost But Little

GAILLARDIA aristata compacta, 2 ft.

BUSH GAILLARDIA
Conspicuous for profusion and duration of bloom and striking color effect. The petals are broadly margined yellow, remainder of flower crimson. June-Oct. (BC). 30c ea.; 3 for 75c.

G. Golden Goddess, 2 ft.

(New). Prolific ever-blooming variety with strikingly effective, rich golden-yellow flowers, 4-4½ inches across. July-Oct. (BC). 40c ea.; 3 for \$1.00.

GEUM, Dolly North, 1½-2 ft.

AVENS
Rich orange flowers in great profusion with attractive foliage. An excellent novelty. June-July. (BCR) 40c each; 3 for \$1.00.

GYPSOPHILA paniculata, fl. pl., 2-3 ft.

BRISTOL FAIRY BABYSBREATH
Large panicles of double, white blooms, with a misty grace not found in other flowers. Can be cut and dried for use during the Winter months. July-Aug. (BC). 50c ea.; 3 for \$1.25.

G. repens, Rosy Veil, 1½-2 ft.

A real pink, double-flowering Gypsophila. Fine, blue-green foliage particularly graceful. July-Oct. (BC). 50c ea.; 3 for \$1.25.

HELIOPSIS zinniaeflora, 2-3 ft.

ZINNIA HELIOPSIS
Double, golden-yellow flowers, 2½-3 in. across, on long strong stems. June-Sept. (BC). 35c ea.; 3 for 85c.

Hemerocallis—DAY LILY

HEMEROCALLIS flava, 2½ ft. LEMON LILY
Clear full yellow; sweet scented. June. (BC). 30c ea.; 3 for 75c.

H. Gypsy, 3 ft. HYBRID DAYLILY
Brilliant deep orange showy flowers. July. (BC). 40c ea.; 3 for \$1.00.

H. kwanso, 4-5 ft. KWANSO DAYLILY
Orange, shaded crimson, semi-double. July-Aug. (BC) 30c ea.; 3 for 75c.

H. thunbergii, 3-4 ft. JAPANESE DAYLILY
Rich buttercup-yellow. July-Aug. (BC). 30c ea.; 3 for 75c.

HEUCHERA sanguinea, 1½-2 ft. CORALBELLS
From mass of ornamental foliage rise graceful spikes covered with pendant flowers, bright coral-crimson. June-Aug. (BCER). 45c ea.; 3 for \$1.20.

HIBISCUS (Marvels), 6-8 ft. ROSEMALLOW
Flowers resemble a single Hollyhock bloom only much larger and velvety. White, pink or scarlet (State color). July-Sept. (BN). 30c ea.; 3 for 75c.

How To Plant and Care For Perennials

Success with perennials requires a rich soil, good cultivation and careful watering.

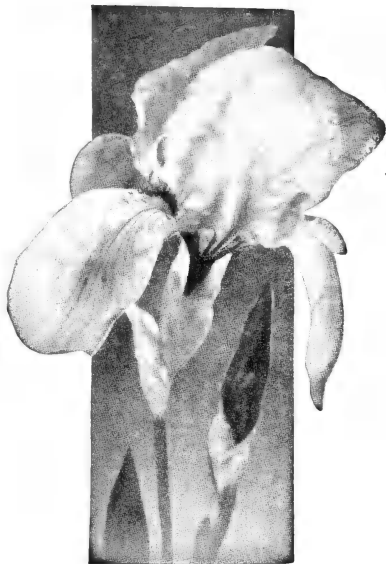
Groups of three or more of a variety produce the best effects. Use taller growing varieties as a background. Near Shrubs which rob Perennials of plant nourishment keep 3 ft. away.

Plant dwarf growing varieties 12 to 18 inches apart; tall or larger growing kinds, two to three feet apart.

Plant in Spring or early Fall, providing Winter protection for Fall plantings, especially Anemones, Campanula, Digitalis, Hollyhocks, Chrysanthemums, Stokesia and Tritoma. For best results transplant every few years to produce more abundant bloom.

The soil should be dug to a depth of at least 12 to 18 inches into which has been worked two inches of well-rotted stable manure. Some other good fertilizer can be used if stable manure is unobtainable but stable manure is to be preferred.

At the beginning of freezing weather apply a mulch of cut tobacco stems, straw manure, leaves or other light material to prevent alternate freezing and thawing of the soil, which may cause damage.



THE BEAUTIFUL BEARDED IRIS

Hosta (Funkia)—PLANTAIN LILY

HOSTA caerulea, 1-1½ ft. PLANTAINLILY
Spikes of nodding, light-blue lily-like blossoms; handsome, dark green, glossy foliage in clumps. July-Aug. (BERS).

H. grandiflora, 1½-2 ft. BIG PLANTAINLILY
Large, waxy-white flowers with an odor like orange blossoms. Aug.-Sept. (BERS).
PRICE: Any of above-Plantain Lilies. 35c ea.; 3 for 90c.

IBERIS sempervirens, 9-12 in. EVERGREEN CANDYTUFT
Low mats covered with innumerable, flat, dense clusters of pure white flowers. Mar.-June. (BCERG). 40c ea.; 3 for \$1.00.

IRIS

Gorgeously colored and beautifully formed, the Iris (sometimes called "Flag") has very appropriately been termed, "The Poor Man's Orchid." A collection of Irises is a veritable rainbow of soft colors.

Not partial as to soil or location and will flourish in semi-shade. Does well planted in groups or in borders. June. (BC).

Albert Victor. Soft blue and lavender.

Anna Farr. White with blue edge.

Demi-Denil. Veined mauve.

Goliath. Bronze yellow and deep purple.

Halfdan. Creamy-white.

Halo. Violet and bluish-violet.

Lohengrin. Soft cattleya-rose.

Quaker Lady. Lavender and old gold.

Stamboul. Rich violet-blue.

Any of above Iris 20c ea.; 3 for 50c.

Set of 9 Iris, (one each variety), \$1.25.

Set of 27 Iris (three each variety), \$2.75.

Varieties Designated With "R" in Descriptions Are Rock Garden Favorites

KNIPHOPIA varia, 2-3 ft. (Tritoma)

TORCHLILY or RED HOT POKER
A plant of striking appearance, bearing pyramidal spikes of blazing red flowers, one hundred on a spike. Aug.-Oct. (BCM). 35c ea.; 3 for 85c.

LOBELIA cardinalis, 2-4 ft.

CARDINAL FLOWER
Vivid, crimson flowers; often 10 or more spikes, 25 to 30 inches long, on a plant. Requires moist location. July-Oct. (BS). 40c ea.; 3 for \$1.00.

LYCHNIS chalcedonica, 2-3 ft.

MALTESE CROSS
Immense heads of vermilion-scarlet flowers. June-Aug. (BCR). 30c ea.; 3 for 75c.

LYTHRUM roseum, 3-4 ft.

ROSE LOOSESTRIFE
Tall, erect, graceful spikes of rose colored flowers. July-Aug. (BSW). 35c ea.; 3 for 85c.

Papaver—POPPY

(When planting Poppies allow for 3 inches of soil over the crown.)

PAPAVER orientale, 2-3 ft. ORIENTAL POPPY

Dazzling, silken, cup shaped blooms of brightest crimson-scarlet, with large purplish-black blotches at base of petals. May-June. (BCMS).

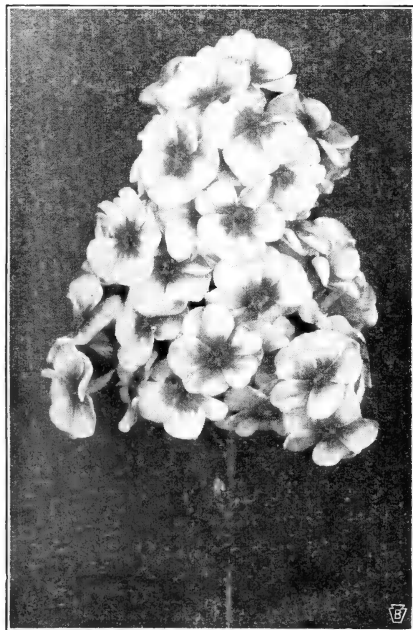
P. Mrs. Perry, 2-3 ft.

Lovely shade of apricot unique in Poppies. May-June. (BCMS).

P. wurtembergia, 2-3 ft.

WURTEMBERG POPPY
Large, dark scarlet flowers. Good stems and foliage. May-June. (BCMS).

PRICE. Any of above Poppies, 35c ea.; 3 for 85c.



PHLOX Display Superb Blooms

PEONIES—(Everybody's Flower)

Peonies are remarkably easy to grow, perfectly hardy, free from the many diseases and insects that attack so many plants and will bloom year after year. May-June. (BC).

Write us for list of Barr's "Will Grow" Peonies for planting in August and September which is the best time to plant Peonies.

PHLOX

Phlox embody all the qualities desirable in a plant—hardiness, upright carriage, pretty foliage, fragrance, beauty and variety of color. Besides, Phlox have the added merit of being in bloom during the summer when other plants are out of bloom. July-Sept. (BC).

We supply extra strong, field-grown plants that will bloom the first season.

B. Comte. Rich satiny amaranth; medium; late. 25c ea.; 3 for 70c.

Columbia. (Patented.) Exquisite cameo-pink with faint blue eye; lasting color and long blooming. Foliage free of mildew and black spot. 40c ea.; 3 for \$1.00.

Daily Sketch. Large trusses of enormous individual flowers; beautiful light salmon-pink with faint carmine eye. 35c ea.; 3 for 90c.

E. I. Farrington. Large heads of beautiful salmon-pink flowers. Grows to a height of 18 to 24 inches and carries its foliage clear to the ground. A much admired variety wherever grown. 25c ea.; 3 for 70c.

Enchantress. Bright salmon pink with darker eye. Resembles Elizabeth Campbell in color but of much stronger growth, and rich green, glossy foliage. 25c ea.; 3 for 70c.

Fuerbrand. Brilliant orange scarlet; medium; blooms very freely. 25c ea.; 3 for 70c.

George Stipp. Glowing salmon. New variety with large individual blooms and clusters. 25c ea.; 3 for 70c.

Harvest Fire. Brilliant salmon-orange. Heads are large as well as the individual flowers. Disease-resistant foliage. 40c ea.; 3 for \$1.00.

Hauptman Koehl. Rich deep blood-red, color retained a long time. Large, compact trusses on strong stems. 25c ea.; 3 for 70c.

Leo Schlageter. Large, scarlet trusses slightly darker in the center. Very good. 25c ea.; 3 for 70c.

Miss Lingard. Fine white, with pink eye; free bloomer; early; medium. 25c each; 3 for 70c.

Morgenrood. Large clusters of a bright rose shade with deeper colored eye. A very distinct variety; dwarf. 30c ea.; 3 for 85c.

Mrs. Jenkins (Independence). Immense, compact heads of pure white flowers; midseason; tall. 25c ea.; 3 for 70c.

Rheinlander. Beautiful apricot pink; immense trusses of large flowers; early; medium. 25c ea.; 3 for 70c.

Thor. Deep apricot-pink, suffused and overlaid with a scarlet glow; white halo surrounds the red eye; dwarf; early. 25c ea.; 3 for 70c.

DWARF PHLOX, Mountain Pinks

Flowers 1 inch in diameter completely covering the moss-like, evergreen foliage. Good in rockeries, in cemeteries, on terraces, between stepping stones and for edging. May-June. (BERS).

Phlox subulata alba, 4-6 in. WHITE MOSS
Pure white. 25c each; 3 for 70c.

P. s. Samson, 4-6 in.
Very large flowers of brilliant, deep rose-pink in early Spring. A striking novelty. 25c ea.; 3 for 70c.

P. s. vivid, 3-6 in.
Bright pink with fiery-red eye. Finest free flowering dwarf phlox. 30c ea.; 3 for 75c.

P. ovata, 4-8 in. CAROLINE MOUNTAIN PHLOX
Bright reddish-pink. May-June. (BERS). 30c ea.; 3 for 75c.

Phlox Is One of the Most Greatly Enjoyed and Easily Grown of Hardy Perennials

How to Build a Rock Garden

Select a gentle slope. Use the largest boulders possible, placing the bigger stones at the base, the strata all running the same. They should appear naturally placed. A few large rocks rather than many small ones are preferable.

In the pockets between boulders there should be a rich, porous, moisture-holding soil at least two feet deep. Provide moisture in abundance.

Most entrancing groups of plants for Rock Gardens are low growing, brilliantly flowering, rather heavily foliaged Perennials. For interesting results the year round, include some dwarf Evergreens like Abelias, Azaleas, Daphne, Junipers, Retinosporas, Yews, Pachysandra, and Cotoneasters for their touch of evergreen foliage, stability and the floral beauty of the blooming kind.

Low Annuals should always be added for continuous bloom through the Summer.

PLUMBAGO. See *Ceratostigma*.

PRIMULA veris, 6-9 in. COWSLIP PRIMROSE
Showy plants with clusters of small, yellow flowers that are graceful and dainty. April-May. (CERS). 35c ea.; 3 for 85c.

FYRETHRUM. See *Chrysanthemum coccineum*.

RUBBECKIA laciniata, 4-5 ft. GOLDEN GLOW
Golden-yellow flowers with high cone-like centers. July-Sept. (BCM). 30c ea.; 3 for 75c.

R. The King, 3-3½ ft.

An improved *Rudbeckia* with broad, deep crimson-red petals and rich coppery-bronze cones. Petals never fall back. July-Aug. (BCM). 45c ea.; 3 for \$1.15.

SALVIA farinacea, 2 ft. MEALY CUP SAGE
Beautiful pale blue flowers on neat plants. July-Sept. (BC). 35c ea.; 3 for 85c.

VERONICAS

VERONICA, Blue Spire, 2 ft.

Lovely deep blue spikes of flowers, thriving in almost any type of soil; lively green foliage. July-Sept. (BC).

V. incana, 1-1½ ft.

WOOLLY SPEEDWELL
Amethyst-blue flowers in long, narrow spikes. Gray woolly foliage. July-Sept. (BER).

V. repens, 3-4 in.

CREEPING SPEEDWELL
Prostrate, compact plant growing in dense masses with light blue flowers. May. (EGRS).

V. spicata, 1½-2 ft.

SPIKE SPEEDWELL
Long spikes of violet-blue flowers; upright form. June-July. (BEMR).
Price. Any of above Veronicas, 35c ea.; 3 for 85c.

Plant Annuals For Quick, Showy Effects

These are easily grown, give quick results and include some of the most showy garden flowers. They offer great variety of color, form and foliage, and are especially valued for flowering at a season of the year when blossoms on permanent plants are scarce. Frequently used to fill bare spots in the Hardy Border and to supplement the Rock Garden. Most of the bedding type will furnish an abundance of cut flowers for the house.

(Ready to plant out about May 10)

Varieties marked (b) are especially adapted to bedding purposes: (e) for edging; (p) for porch boxes; (r) for rock gardens.

Ageratum. (b) (e) (p) (r) Bright blue; dwarf, border variety. 3 in. pots. \$1.50 per doz.; \$10.00 per 100.

Begonias. (b) (p) Pink or deep rose. Fine for shady locations. 3 in. pots. \$1.50 per doz.

GERANIUMS (b) (p)

Poitevine. Salmon pink. **Radio Red.** Dark red. **Ricard.** Bright red.
4 in. pots. 30c ea.; 3 for 80c; \$3.00 per doz.

PETUNIAS (b) (p) (r)

Petunias are a real summer favorite, being unexcelled for profusion of bloom through a long season ending only with severe frost.

A bed of Petunias makes a gorgeous display of color. Good also as single plants in pots, for baskets or window boxes.

Barr's Petunias are well-grown, vigorous plants.

Celestial Rose. An improved, extra-dwarf Rose of Heaven. Sparkling, single, bright pink. Plants are compact, bushy and literally covered with flowers. Best bedding variety.

Snowstorm. A fine, dwarf uniform white for bedding. Well-formed, large flowers; single.

Price. Your choice of above varieties: From pots, \$1.50 per doz.; \$10.00 per 100. Transplants (not potted), 75c per doz.; \$5.00 per 100.

Lantana. (e) (p) (r) Rose, orange or yellow. Large plants from 4 in. pots, 3 for 85c; \$3.00 per doz.

MARIGOLDS (b) (e)

Harmony. Deep orange with maroon collar; very double and free flowering. Excellent for borders. 50c per doz.; \$3.00 per 100.

Pansies, Giant Mixed. (b) (e) (r) 60c per dozen; \$5.00 per 100.

Zinnias. (b) Scarlet, apricot or rose. Large-flowering. Transplants (not potted), 50c per doz.; \$3.00 per 100.



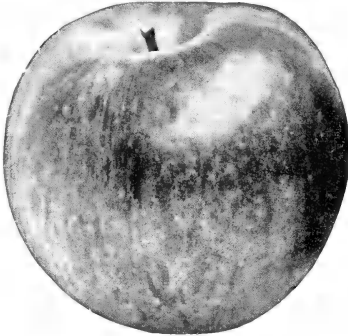
GERANIUMS, PETUNIAS, AGERATUM, BEGONIAS, ENGLISH IVY, etc., will make up an attractive Window Box.

"Will Grow" Summer Annuals Are Well-Established, Vigorous Plants For Quick Results

Plant Fruit Trees To Help In Food Production

Barr's "Will Grow" Fruit Trees are the largest sizes that can be planted to best advantage, are straight trunked, true to name. By reason of their being northern grown they have unusual vigor, will transplant successfully, make good growth, and give an early and abundant yield. Plant cherry tree tap-root straight down.

Heavy, No. 1 grade, selected trees, note large caliper (trunk diameter) supplied.



STAYMAN'S WINESAP APPLE

STANDARD APPLE

(D) Dessert variety; (C) Cooking variety.

Baldwin. Large; bright red; rich juicy. Winter. (DC).

Grimes' Golden Pippin. Medium. Sub-acid. Winter. (DC).

Jonathan. Brilliant red; highly flavored. Winter. (DC).

McIntosh. Medium to large; deep red. Winter. (DC).

Northern Spy. Medium to large; red striped. Sub-acid. Winter. (DC).

Rambo. Large; yellow; rich and of good flavor. Autumn. (DC).

Red Astrachan. Greenish-yellow with red stripes, often nearly all red. Autumn. (DC).

Red Delicious. Large; red striped. Winter. (D).

Rome Beauty. Large; juicy; mottled and striped different shades of red. Good baking apple. Winter. (C).

Smokehouse. Medium; red striped. Sub-acid. Winter. (DC).

Stayman's Winesap. Medium, bright red. Winter. (DC).

Wealthy. Red of good quality; good keeper. Acid. Autumn. (DC).

Yellow Delicious. Large; clear, bright yellow. Winter. (DC).

Yellow Transparent. Pale yellow. Sub-acid. Summer. (DC).

York Imperial. Medium yellow, shaded red. Acid. Winter. (C).

Extra large. 2 yr. 5 to 6 ft., $\frac{3}{4}$ -1 in. cal. 75c each; \$6.00 per 10; \$50.00 per 100 of your selection.

CRAB-APPLE

Transcendent. Medium, golden yellow, crimson cheek. September. Strong, stocky trees. 2 yr. $\frac{3}{4}$ -1 in. cal. 75c ea.; \$6.00 per 10.

APRICOT

Moorspark. Large, deep orange. Rich. August. 2 yr. 4-5 ft., $\frac{3}{4}$ -1 in. cal. \$1.00 ea.; \$9.00 per 10.

SOUR CHERRY

Early Richmond. Medium, deep red, rich, acid. Mid-June.

English Morello. Large, deep red, pleasant, acid. Late July.

Montmorency. Large, bright red; pleasing acid flavor. June.

2 yr. 3 to 5 ft., $\frac{3}{4}$ -1 in. cal. 90c ea.; \$8.00 per 10 of your selection.

SWEET CHERRY

Black Tartarian. Very large, purplish-black, rich. June.

Governor Wood. Large, yellow, shaded red. June.

Napoleon Bigarreau. Large, yellow-red, excellent. July.

Rockport. Large, red, pleasant and rich. June.

Schmidt's Bigarreau. Large, red, rich and pleasant. July.

Windsor. (Oxheart). Large, liver-color, rich. July.

Yellow Spanish. Very large, yellow, red cheek, sweet. Last of June.

2 yr. 5 to 6 ft., $\frac{3}{4}$ -1 in. cal. \$1.10 ea.; \$10.00 per 10 of your selection.

PEACH

Belle of Georgia. White with red cheek; excellent flavor. Early September.

Champion. Very large; white; red cheek, delicious. Late September.

Crawford's Early. Medium; yellow. July.

Crawford's Late. Very large; yellow; red cheek. Late September.

Elberta. Very large, yellow; red cheek, juicy, rich. Middle of August.

Golden Jubilee. Large; yellow; freestone. Middle of August.

J. H. Hale. Very large; yellow. Late August.

Yellow St. John. Large; yellow; sweet. July.

1 yr., 4 to 5 ft., $\frac{5}{8}$ - $\frac{7}{8}$ in. cal. 50c ea.; \$4.00 per 10; \$30.00 per 100 of your selection.

PEAR

Bartlett. Large, clear yellow; aromatic. Autumn.

Duchess d'Agnouleme. Large, greenish yellow, juicy. Autumn.

Kieffer. Large, golden yellow, sweet. Winter.

Seckel. Small, yellowish russet; spicy. Autumn.

2 yr. 5 to 6 ft., $\frac{3}{4}$ -1 in. cal. 90c ea.; \$8.00 per 10 of your selection.

PLUM

Burbank. Large; cherry-red; sweet. Last of August.

German Prune. Large; purple; sweet. September.

Reine Claude. Large, green gage; excellent. Late September.

Satsuma. (Blood Plum). Large; purplish-red; juicy. Mid-July.

Yellow Egg. Large, oval, yellow; juicy. September.

2 yr. 5 to 6 ft., $\frac{3}{4}$ -1 in. cal. \$1.00 ea.; \$8.00 per 10.

QUINCE

Orange. Large and prolific; orange-yellow; delightfully fragrant. Early.

1 yr., 4 to 5 ft., $\frac{5}{8}$ - $\frac{7}{8}$ in. cal. \$1.00 ea.; \$9.00 per 10.

Barr's Exceptionally Large "Will Grow" Fruit Trees Are Too Big to Mail

Fruit Producing Plants For Victory Gardens

ASPARAGUS

Mary Washington. 1 yr. Select No. 1 roots. 50c per doz.; \$1.75 per 100; \$15.00 per 1000.

BLACKBERRY

In planting Grapes dig the hole as big as large, black and sweet. Good strong canes.

CURRENT

Perfection. A large red variety. 2-yr. strong healthy plants. 25c ea.; 3 for 70c; \$2.00 per 10.

GRAPE VINES

In planting Grapes dig the hole as big as though planting an apple tree and prune severely.

Black

Campbell's Early. One of the largest fruiting Grapes and extremely satisfactory.

Concord. The well-known black Grape. Can always be depended on to fruit heavily. Strong 2 yr. plants, 25c ea.; \$1.50 per 10; \$12.00 per 100.

Worden. Bunch large and compact. Good, large berries and an early fruiting variety.

Red and Purple

Catawba. A very nice berry, having an unusually sweet and aromatic flesh.

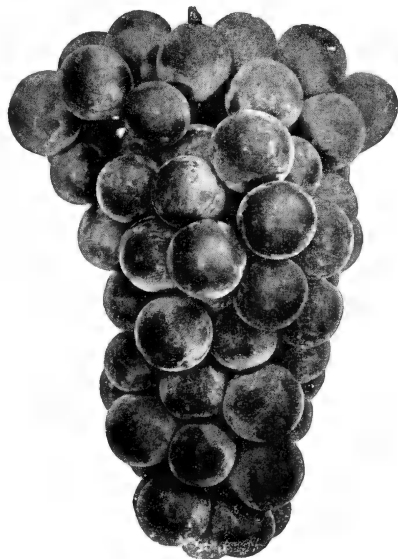
Delaware. The well-known small, very sweet red Grape. Comes in small bunches.

Salem. Berries larger than Catawba, flesh tender, juicy and sweet.

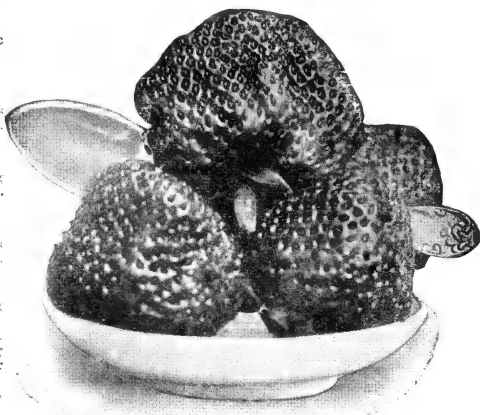
White

Niagara. Sweet and juicy, large, round berries; long, compact, heavy bunches; best white.

Selected, strong 2 yr. Grape Vines, except where noted. 30c ea.; \$2.00 per 10; \$17.50 per 100 of your selection.



PLANT GRAPES IN YOUR GARDEN



STRAWBERRIES Make A Tempting Dish

GOOSEBERRY

Downing. Light green. **Houghton.** Pale red. Strong 2 yr. plants, 35c ea.; 3 for 90c; \$2.50 per 10.

RASPBERRY

Raspberry plants, and Blackberries as well, should be planted 3 feet apart in rows that are 5 to 6 feet apart, and pruned back heavily.

Cumberland. Well-known black-cap. Fruit large.

Cuthbert. Hardy; sweet; productive. Deep crimson.

Latham. Large, round, brilliant red; heavy yielding. Mosaic free and hardy.

Strong plants, 25c ea.; 70c per 10; \$5.00 per 100 your selection.

RHUBARB

Strong, 2 yr. roots, 3 for 75c; \$1.50 per 10.

STRAWBERRIES

Strawberries will grow in any good garden soil. Plant 1 foot apart in rows 3 to 4 feet apart.

Big Joe (Perfect). Vigorous grower and very productive. Berries large, conical shape, rich red, excellent flavor. Best mid-season variety.

Chesapeake (Perfect). Large, firm, glossy berries of delicious flavor. Best late variety.

Dorsett (Perfect). New variety with heavy yielding qualities; light colored; delicious flavor. Early.

Fairfax (Perfect). Firm berry of wonderful flavor and high dessert qualities. Very early.

Premier (Perfect). Glossy rich red color extending clear through. Deliciously flavored. Immensely productive. Best very early.

Strong layer plants, 10 for 35c; 25 for 65c; \$2.00 per 100; \$15.00 per 1000 of your selection.

Everbearing Strawberries

Mastodon. Large fruiting and most prolific, bearing continuously June to frost; good flavor.

10 for 75c; 25 for \$1.25; \$3.50 per 100.

You Will Enjoy More The Fruit Grown in Your Own Garden and Save Money as Well

Your Plants And Lawns Respond Best If Fertilized

When small quantities of fertilizers are wanted by parcel post, please add postage as follows: 10c for 3 lbs.; 15c for 5 lbs.; 20c for 10 lbs. Larger quantities will be sent by express or freight.

Adco. Garden rubbish such as leaves, cuttings, straw, etc., is turned into a true manure (best of all fertilizers) when mixed with Adco. 25 lbs. Adco makes $\frac{3}{4}$ ton valuable manure. 7½ lb. carton, \$1.00; 25 lbs., \$2.00; 150 lbs., \$10.50.

Aluminum Sulphate. Useful in creating acid soil conditions. Broadcast 1 to 3 lb. to each square yard of surface. 5 lbs., 50c; 10 lbs., 85c; 25 lbs., \$1.50; 50 lbs., \$2.50; 100 lbs., \$4.00.

Bone Meal. (Raw) Safe and effective; especially good on lawns. One pound will sow 10 sq. ft. 3 lbs., 25c; 5 lbs., 45c; 10 lbs., 75c; 25 lbs., \$1.50; 50 lbs., \$2.50; 100 lbs., \$4.00.

Bovung. Natural cow manure, thoroughly dehydrated and pulverized. Free of weed seeds. An organic fertilizer of superior merit. One pound is sufficient for 25 sq. ft. of area. 5 lbs., 35c; 10 lbs., 60c; 25 lbs., \$1.25; 50 lbs., \$2.00; 100 lbs., \$3.50; 500 lbs., \$15.00; 1000 lbs., \$27.50; ton \$50.00.

Cotton Seed Meal. An excellent organic fertilizer for such acid loving plants as Rhododendrons, Azaleas, Laurel, etc. Rich in ammonia and potash. 1 lb., 15c; 5 lbs., 60c; 10 lbs., \$1.00; 25 lbs., \$1.75; 50 lbs., \$3.00; 100 lbs., \$5.00.

Lawn Fertilizer (Barr's). Special formula that makes grass develop stronger and deeper roots to better compete with Crab Grass and other weeds, which are surface rooting. Gives good color and vigor to the lawn. Apply 1 lb. to 40 sq. ft., and water heavily. 5 lbs., 60c; 10 lbs., \$1.00; 25 lbs., \$1.75; 50 lbs., \$3.00; 100 lbs., \$5.00.

Leaf Mold. Nature's plant food. Mix with soil in which Rhododendrons and Azaleas are to be planted, 3 parts Leaf Mold to 1 part soil. 25 lbs., 65c; 50 lbs., \$1.00; 100 lbs., \$1.50; 500 lbs., \$6.00; 1 ton (2000 lbs.) \$20.00.

Lime, Hydrated. For lawn and field use where the ground has become sour. One pound is sufficient for 25 sq. ft. of surface. 10 lbs., 35c; 50 lbs., 90c; 100 lbs., \$1.50; 500 lbs., \$6.50.

Peat Moss. (Ground) Applied as mulch, conserves moisture, keeps down weeds, mellowes and acidifies the soil and beautifies at same time. Water well before and immediately after applying as a mulch. 1 bale covers 125 sq. ft. to depth of 2 inches. 1 bu., 75c; 1 bale, \$5.50.

Rhododendron Food. (Barr's). Both acidifies the soil and provides plant food especially needed by Rhododendrons, Azaleas and other broad-leaved evergreens. Broadcast 1 lb. to each square yard two or three times a year. 1 lb., 15c; 5 lbs., 60c; 10 lbs., \$1.00; 25 lbs., \$2.00.

Rhodo-Azalea Food. (G & O) Has been responsible for many beautiful prize specimens. Acid where acid is needed. Broadcast 3 lbs. per 100 sq. ft. 10 lbs., \$1.25; 25 lbs., \$2.50; 100 lbs., \$3.75.

Sheep Manure Pulverized. A natural manure for lawns, potting soil, and flower gardens. 5 lbs., 40c; 10 lbs., 65c; 25 lbs., \$1.20; 50 lbs., \$2.00; 100 lbs., \$3.50.

Soil Potting. Mixture of soil, sand and fertilizer. Ideal for potting purposes, or any place where especially good soil is needed. $\frac{1}{2}$ bu., 50c; 1 bu., 75c; 2 bu., \$1.25; 3 bu., \$1.60; 5 bu., \$2.00; 1 ton, \$4.50.

Stim-U-Plant for more beautiful plants and flowers. The original plant food tablet; makes plants grow faster and bloom better. On market 24 years. Wonderful results. Odorless, clean and economical. Prices: 10 tablets, 10c; 30 tablets, 25c; 100 tablets, 75c; 500 tablets, \$2.50; 1000 tablets, \$3.50.

Tobacco Dust. Excellent dusting insecticide with fertilizing value; apply liberally to plants and on surface of soil as a mulch. 5 lbs., 25c; 25 lbs., 75c; 50 lbs., \$1.15; 100 lbs., \$2.00.

Tobacco Stems, Cut. A combined fertilizer, mulch and insecticide for lawns and shrubbery, trees and evergreens. Unlike stable manure does not introduce weed seeds. 100 lbs. will cover 250 sq. ft. thickly. \$1.50 per 100 lbs.; 500 lbs., \$6.00; \$20.00 per ton.

Tree Food (Barr's). Trees will make quick response to this special food and its action will also be long lasting. Especially valuable for Oak trees where leaves show tendency to turn yellow. Use 4 lbs. to each 1 in. caliper early spring, and again in July. Do not use as top dressing but insert in holes in ground as far as branches extend above. 5 lbs., 50c; 10 lbs., 85c; 25 lbs., \$1.50; 50 lbs., \$2.65; 100 lbs., \$5.00.

Vigoro. Special prepared plant food. Vigoro supplies all 11 of the vital food elements all growing plants need from the soil. It's clean, odorless, sanitary and easy to apply. Use 1 lb. to 20-25 sq. ft. area. 5 lbs., 45c; 10 lbs., 85c; 25 lbs., \$1.50; 50 lbs., \$2.50; 100 lbs., \$4.00.

Wood-Ashes. Good lawn grasses will not succeed in sour soil. Wood ashes correct that. If bone meal has been sown in the land do not use Wood-ashes for three or four weeks. One pound will sow 10 sq. ft. 25 lbs., \$1.25; 50 lbs., \$2.00; 100 lbs., \$3.50.

Garden Accessories

Bird Baths

Concrete, beautifully and substantially molded. Diameter of bowl 23 inches; pedestal 29½ inches; height over all 34 in.; weight 220 lbs. \$10.00 ea.

Japanese Beetle Traps

Most practical way to catch Japanese Beetles. Simple in operation; effective in action. Furnished with bait and strong hangers. 75c each. Extra bait 15c per charge; \$1.00 per large can.

Special Wrap for Trees

Pure vegetable waterproof, kraft paper for wrapping trunks of newly planted trees. Adjusts itself automatically to contour of tree. Protection for shade and fruit trees against sun scald, loss of moisture and attacks of insects, rabbits and field mice. Rolls of 155 lineal feet, 5 inches wide, 75c ea. By Parcel Post 15c additional.

Sprayers

All brass, continuous high pressure, reinforced full quart sprayer. Combination nozzle. Built like a fire extinguisher. Tested for 65 lbs. pressure. \$2.50 ea. Also heavy tin sprayers of 1 qt. capacity at 50c each.

For Growing Healthier Plants



Amazing new growth stimulant for garden and house plants, roses, shrubs and trees. Produces larger blooms, more luxuriant foliage; restores sick and straggly plants to health; decreases transplanting mortality; gives lawns increased vigor and improved color. A season's supply of the pure crystalline powder for the average garden with full directions. \$1.00 postpaid.

Please Include Sufficient Postage For Shipments Desired By Parcel Post Delivery

Insecticides And Fungicides To Keep Plants Healthy

Aphitrogen. Kills aphids (plant lice), also refreshes and invigorates the foliage. Invisible, non-poisonous, will not turn foliage yellow. 2 oz., 50c; ½ pt., \$1.25; 1 pt., \$2.25; 1 qt., \$3.50.

Arsenate of Lead. (Powdered) To combat leaf-eating insects. Use 1½ to 2 lbs. to 50 gals. of water. 1 lb., 40c; 4 lbs., \$1.00.

Black Leaf 40. For aphids and all sucking insects. 1 oz., 35c; 5 ozs., \$1.00; 1 lb., \$2.50.

Bordeaux Mixture. For mildew, blight, black rot and other fungus diseases of fruits and plants. 1 lb., 40c; 4 lbs., \$1.00; 10 lbs., \$2.25.

Borerkil is a scientifically prepared paste that kills boring insects when injected into their burrows. Safe, convenient and simple to use. Indispensable as a dog repellent and poultry fumigant. Packed in handy tubes with injectors included. Garden Size, 60c.

Clotracide. Complete spray for Roses. Controls fungus diseases, leaf eating worms and insects, also plant lice or aphids. Convenient, effective, economical, as no other spray is needed. 10 gal. size, 35c; 20 gal. size, \$1.50.

C. P. O. Liquid insecticidal soap spreader that increases the efficiency of contact spray solutions. Odorless; non-poisonous; does not discolor foliage. 3 ozs., 25c; 1 qt., \$1.00; 1 gal., \$2.50.

Cyanogas "A". Sure, quick, economical mole control. Also effective for ants, locusts, mice, snakes, rats and other rodents. Cyanogas "A" is a powder which upon exposure to the air gives off a poisonous gas. Since it is the gas that kills it is not necessary to bring the dust into actual contact with the pest being controlled. Complete instructions with every can. 1 lb., 75c; 5 lbs., \$3.00.

Dogzoff. Will keep dogs, cats or rabbits from any place where they are not wanted. Not poisonous to plants. Will not injure animals. 4 oz. bottle, 60c postpaid.

Fish Oil Soap. Excellent remedy for scale and aphids. 1 lb., 35c; 5 lbs., \$1.50; postage extra.

Fumogen. Repels dogs, chases ants off lawns, walks and flower beds; rids home of ants; controls many soil insects. 9 oz. can, 50c.

Fungtrogen. Effective preventive and remedy for mildew, black spot and other fungus diseases. ½ pt., 75c; 1 pt., \$1.25; 1 qt., \$2.00.

Insectrogen. Adheres to foliage long time, killing insects present, those hatching later or coming from unsprayed plants. 4 oz. can, 60c; ½ pint, \$1.00; 1 pint, \$1.75; 1 qt., \$2.75.

Japex. Kills and repels Japanese Beetles. Does not discolor foliage. Non-poisonous to man and animals. Very effective repellent against Beetles, and deadly to caterpillars, aphids, red spider, etc. 5 gal. size, 75c; 20 gal. size, \$2.00.

Jap-Ro-Cide. Improved repellent for protecting foliage plants against Japanese Beetles. Safe to humans, birds and animals, leaves no deposit, easy to use, odorless, yet strongly repellent to Japanese Beetles. 1 lb. canister (sufficient for 20 gal.), \$1.25; 5 lb. canister, \$5.50.

Killogen. Plant spray and ant killer. A contact spray to control insects in the garden, window boxes and on evergreens. Splendid for house plants. Non-poisonous to humans, harmless to foliage or blooms. Another "ogen" product, 2½ oz. bottle, 50c (makes 250 times its volume).

Lime Sulphur. In powder form for control of San Jose scale and fruit tree diseases. 1 lb., 40c; 5 lbs., \$1.75; 10 lbs., \$2.50.

Marvel Spray. Sure specific for mealy bugs. Kills by penetrating the waxy coat of the insect. Stimulates plant growth; does not burn or stain. 2 oz. bottle, 50c.

Molgen. An "ogen" product in semi-powder form. Eliminates moles from lawns, flower and bulb beds, etc. Will not harm soil or grass. ½ lb. can, 50c.

Red Arrow. Fatal to both chewing and sucking insects, yet harmless to human beings and pets, such as dogs, cats and birds. 1 oz. makes 4 to 8 gal. of spray. 1 oz., 35c; ¼ pt., \$1.00; 1 pint, \$2.85; 1 qt., \$5.40.

Sunoco. Most effective spray for scale insects. 1 gal. makes 30 to 75 gal. of spray. 1 gal., \$1.40; 5 gal., \$5.50.

T A T Ant Bait. Just squeeze bait on top of ant hill. Enables you to treat all colonies at once. Each tube sufficient for several hundred small size hills. 1 oz. tube, 25c each.

T A T Ant Trap. Recommended for the home due to exclusive safety feature. Destroys both sweet and grease eating ants. Worker ants enter traps and carry poison back to colony and soon the queen and every member is destroyed in their nests which usually are outside the house or in the foundations. 25c each.

Tree Tanglefoot. Easily applied, effective, economical and non-injurious protection for fruit, shade and ornamental trees against ants, caterpillars and all crawling insects. One pound is sufficient for 12 to 15 ft. of tree band. Also useful for waterproofing wounds in trees. 1 lb. can, 75c. Postage extra.



Complete all-purpose Rose Spray. Offers the first definite mildew and black spot control. Combining an insecticide it kills all insects, including sucking and leaf-eating types. Remains on foliage, repelling subsequent attacks. Stimulates plant growth, resulting in fine foliage and luxuriant blooms.

Kit "A" (Protects 12 to 20 roses a season) \$1.50
 Kit "B" (Protects 50 to 75 roses a season) 4.00
 Kit "C" (Protects 100 to 150 roses a season) 6.00
 Kit "D" (Estate Kit, makes 128 gals.) 20.00

"One of the inexpensive possessions that we can continue to enjoy, come war and taxes, is our Shade and Decorative Trees."—Pathfinder.

Above Insecticides and Fungicides Will Give Most Satisfactory Results. Please Include Postage

INDEX

<p>A</p> <p>Abelia 16</p> <p>Abies 8</p> <p>Acacia 33</p> <p>Acanthopanax 28</p> <p>Acer 20</p> <p>Aldo 44</p> <p>Ageratum 41</p> <p>Alder, Black 31</p> <p>Almond, Flowering 33</p> <p>Aspire, Carolina 29</p> <p>Althae 37</p> <p>Aluminum Sulphate 44</p> <p>Alvium 37</p> <p>Amelanchier 28</p> <p>Ampelopsis 36</p> <p>Amygdalis 33</p> <p>Anchusa 37</p> <p>Andromeda 18</p> <p>Anemone 37</p> <p>Angelica, Fiveleaved 28</p> <p>Annals, Summer 41</p> <p>Ant Bait 45</p> <p>Ant Trap 45</p> <p>Anthemis 37</p> <p>Aphistrogen 45</p> <p>Apple 42</p> <p>Apricot 42</p> <p>Aquilegia 37</p> <p>Aralia 28</p> <p>Arboretum 14</p> <p>Arbutus, Bush 16</p> <p>Aristolochia 28</p> <p>Aronia 28</p> <p>Arrow Wood 34</p> <p>Arsenate of Lead 45</p> <p>Ash, Mountain 26</p> <p>Ash, White 23</p> <p>Asparagus 47</p> <p>Aster, Hardy 47</p> <p>Avens 39</p> <p>Azalea 16, 28</p>	<p>B</p> <p>Baby's Breath 39</p> <p>Barberry 29</p> <p>Basewood 29</p> <p>Bayberry 32</p> <p>Beauty Bush 33</p> <p>Beauty Fruit 28</p> <p>Bedding Plants 41</p> <p>Beech 22</p> <p>Begonia 41</p> <p>Bellflower 38</p> <p>Berberis 29</p> <p>Betula 21</p> <p>Bignonia 36</p> <p>Biota 14</p> <p>Birch 21</p> <p>Bird Baths 44</p> <p>Bittersweet 36</p> <p>Black Alder 31</p> <p>Blackberry 43</p> <p>Blackleaf 40 45</p> <p>Bluebeard 29</p> <p>Bonemeal 44</p> <p>Bordeaux 45</p> <p>Borerkill 45</p> <p>Bowing 44</p> <p>Boxwood 16</p> <p>Box Thorn 36</p> <p>Bridalwreath 33</p> <p>Buddleia 28</p> <p>Bugbane 38</p> <p>Bugloss 37</p> <p>Burning Bush 30</p> <p>Bush Clover 28</p> <p>Butterfly Bush 28</p> <p>Buxus 16</p>	<p>C</p> <p>Calliopsis 28</p> <p>Calycanthus 29</p> <p>Camomile 37</p> <p>Campanula 38</p> <p>Cantebury Bell 38</p> <p>Caragana 29</p> <p>Cardinal Flower 40</p> <p>Carvopteris 29</p> <p>Cedar 10</p> <p>Celastrus 36</p> <p>Ceratostigma 36</p> <p>Cercis 21</p> <p>Chaenactis 37</p> <p>Chamaecyparis 9</p> <p>Chaste-tree 35</p> <p>Cherry 42</p> <p>Cherry, Flowering 25</p>	<p>C</p> <p>Chionanthus 21</p> <p>Chokeberry 28</p> <p>Christmas Berry 23</p> <p>Chrysanthemum 7, 38</p> <p>Cnicifraga 39</p> <p>Cnicus 21, 30</p> <p>Clematis 45</p> <p>Clostracide 36</p> <p>Clover, White 23</p> <p>Coffee Tree 23</p> <p>Colombine 37</p> <p>Columberry 29</p> <p>Coral Bells 39</p> <p>Cornwallis 34</p> <p>Cornus 38</p> <p>Cotoneaster 16, 30</p> <p>Cottonseed Meal 44</p> <p>C. P. O. 45</p> <p>Crab, Flowering 24</p> <p>Crab-Apple 42</p> <p>Crabtreebush 35</p> <p>Crataegus 22</p> <p>Creepers 37</p> <p>Cypressus 45</p> <p>Curran 43</p> <p>Cyanogas 43</p> <p>Cydonia 30</p> <p>Cypress 38</p>	<p>D</p> <p>Daisy 38</p> <p>Daphne 16</p> <p>Delphinium 38</p> <p>Desmodium 31</p> <p>Dianthus 30</p> <p>Dogwood 38</p> <p>Dogwood, Bush 30</p> <p>Dogwood, Tree 21</p> <p>Dogwood, Tree 21</p> <p>Dogwood, Tree 21</p> <p>Dutchman's Pipe 35</p>	<p>E</p> <p>Elaeagnus 38</p> <p>Enkianthus 27</p> <p>Eunymous 17, 30, 31</p> <p>Eupatorium 38</p> <p>Euphorbia 38</p> <p>Evergreens 38</p> <p>Evergreen Shrubs 16</p> <p>Exochorda 30</p>	<p>F</p> <p>Fagus 22</p> <p>Falsespirea 33</p> <p>Fertilizers 44</p> <p>Ferns 30</p> <p>Ferns 30</p> <p>Ferns 30</p> <p>Fish Oil Soap 45</p> <p>Fleecevine 36</p> <p>Flowering Almond 33</p> <p>Flowering Cherry 25</p> <p>Flowering Crab 24</p> <p>Flowering Plum 25</p> <p>Flowering Quince 30</p> <p>Flowering Spurge 38</p> <p>Forsythia 31</p> <p>Fraxinus 23</p> <p>Fringes, Purple 33</p> <p>Fringetree, White 21</p> <p>Fruit Trees 42</p> <p>Fumigens 45</p> <p>Fungicides 45</p> <p>Fungitrogen 45</p> <p>Funks 38</p> <p>(See Hosta) 39</p>	<p>G</p> <p>Gaillardia 39</p> <p>Geraniums 41</p> <p>Geum 39</p> <p>Goinko Tree 23</p> <p>Globe Flower 31</p> <p>Golden Bell 31</p> <p>Golden Chain 23</p> <p>Golden Glow 41</p> <p>Golden Tuft 37</p> <p>Gosberry 43</p> <p>Grapes 43</p> <p>Grass Seed 41</p> <p>Ground Cover Plants 18</p> <p>Guedler Rose 35</p> <p>Gymnocladus 23</p> <p>Gypsophila 39</p>	<p>H</p> <p>Halesia 23</p> <p>Hamamelis 31</p> <p>Hawthorn 22</p> <p>Hedera 36</p> <p>Hedge Plants 29</p> <p>Heliopsis 39</p> <p>Hemerocallis 39</p> <p>Hemlock 15</p> <p>Heuchera 39</p> <p>Hibiscus 31, 39</p> <p>Holly 17</p> <p>Hollygrape 18</p> <p>Hollyhock 37</p> <p>Honeysuckle, Bush 32</p> <p>Honeysuckle, Clb'g 36</p> <p>Hosta 39</p>	<p>I</p> <p>Iberis 39</p> <p>Ilex 17, 31</p> <p>Inkberry 17</p> <p>Insecticides 45</p> <p>Insectrogen 45</p> <p>Iris 39</p> <p>Ivy 18, 36</p>	<p>J</p> <p>Japex 45</p> <p>Jap-Ro-Cide 45</p> <p>Jasmine 31</p> <p>Jasminum 31</p> <p>Jetbed 33</p> <p>Judas Tree 21</p> <p>Juniper 10</p> <p>Juniperus 10</p>	<p>K</p> <p>Kalmia 17</p> <p>Kerria 31</p> <p>Kniphofia 45</p> <p>Kolkwitzia 31</p>	<p>L</p> <p>Laburnum 23</p> <p>Lace Vine 36</p> <p>Lady, Painted 38</p> <p>Lantana 23</p> <p>Larch 41</p> <p>Larix 23</p> <p>Larkspur 38</p> <p>Laurel, Mountain 17</p> <p>Lawn Grass, Mix. 2</p> <p>Lawn Fertilizers 44</p> <p>Leadwort 38</p> <p>Leafmold 44</p> <p>Lespedeza 31</p> <p>Leucanthemum 18</p> <p>Ligustrum 29</p> <p>Lilac 34</p> <p>Lilac, Summer 28</p> <p>Lily, Day 39</p> <p>Lime 44</p> <p>Lime Sulphur 45</p> <p>Linden 27</p> <p>Liquidambar 23</p> <p>Liriodendron 23</p> <p>Lobelia 43</p> <p>Lonicera 32, 36</p> <p>Loosestrife 40</p> <p>Lychnis 31</p> <p>Lycium 36</p> <p>Lytium 40</p>	<p>M</p> <p>Magnolias 24</p> <p>Mahonia 23</p> <p>Maidenhair Tree 23</p> <p>Miscanthus Cross 40</p> <p>Mahus 24</p> <p>Manure, Sheep 44</p> <p>Maple 20</p> <p>Maple, Dwarf Red 20</p> <p>Marguerite 37</p> <p>Marigold 41</p> <p>Marvel Spray 45</p> <p>Matrimony Vine 36</p> <p>Mistleflower 38</p> <p>Mock Orange 32</p>	<p>N</p> <p>Molgen 45</p> <p>Monk's Pepper Tree 35</p> <p>Mountain Pinks 40</p> <p>Myrica 32</p> <p>Nanking Cherry 33</p> <p>Nannyberry 35</p> <p>Nicotine Sulphate 45</p> <p>(Black Leaf 40)</p> <p>Oak 26</p> <p>Oregon Grape 18</p> <p>Oxydendrum 25</p>	<p>O</p> <p>Oachysandra 18</p> <p>Opagoda 26</p> <p>Painted Lady 38</p> <p>Pansies 41</p> <p>Papaver 40</p> <p>Peach 42</p> <p>Pines 39</p> <p>Pearlbush 30</p> <p>Peat Moss 42</p> <p>Pea-tree 29</p> <p>Peony 39</p> <p>Pepper Bush 29</p> <p>Pepper Tree, Monk's 35</p> <p>Perennials 37</p> <p>Herbaceous 37</p> <p>Periwinkle 18</p> <p>Petunias 35</p> <p>Philadelphus 32</p> <p>Phlox 40</p> <p>Photinia 33</p> <p>Picea 11</p> <p>Pieris 18</p> <p>Pinks, Mountain 40</p> <p>Pinus 12</p> <p>Plane 25</p> <p>Plantainily 39</p> <p>Platanus 29</p> <p>Plum 25</p> <p>Plum, Flowering 25</p> <p>Plumbago 38</p> <p>PolYGONUM 36</p> <p>Poplar 25</p> <p>Poppy 25</p> <p>Poppy, Oriental 40</p> <p>Primrose 41</p> <p>Primula 41</p> <p>Privet 29</p> <p>Prunus 25, 33</p> <p>Pseudotsuga 8</p> <p>Purple Fringe 33</p> <p>Pyraecantha 18</p> <p>Pyrethrum 30</p>	<p>Q</p> <p>Quercus 26</p> <p>Quince 42</p> <p>Quince, Flowering 30</p>	<p>R</p> <p>Raspberry 43</p> <p>Red Arrow 45</p> <p>Red-Bud 21</p> <p>Red Cedar 39</p> <p>Red Hot Poker 48</p> <p>Retinospora 9</p> <p>Rhododendrons 19</p> <p>Rhododendron Food 44</p> <p>Rhodotypos 33</p> <p>Rhubarb 43</p> <p>Rhus 33</p> <p>Romia 33</p>	<p>R</p> <p>Rose 33</p> <p>Rose Aracia 33</p> <p>Rose, Shrub 33</p> <p>Rose of China 33</p> <p>Rose of Sharon 31</p> <p>Roses, Hardy, Climb. 6</p> <p>Roses, Hybrid 6</p> <p>Tea 3, 4, 5</p> <p>Roses, Folyantha 6</p> <p>Roses, Shrub 33</p> <p>Rose Tree of China 25</p> <p>Rudbeckia 41</p>	<p>S</p> <p>Sage, Mealy Cup 41</p> <p>Saint John's Wort 31</p>	<p>S</p> <p>Salix 26</p> <p>Salvia 41</p> <p>Scholar Tree 26</p> <p>Seeds, Grass 2</p> <p>Shalblow 28</p> <p>Shasta Daisy 38</p> <p>Sheep Manure 44</p> <p>Shrubs, Deciduous 28</p> <p>Silver Bell 23</p> <p>Silver Lace Vine 36</p> <p>Smoke-tree 33</p> <p>Snakeroot 38</p> <p>Snowball 35</p> <p>Snowberry 34</p> <p>Snowhill 31</p> <p>Soap (Fish Oil) 45</p> <p>Soil Potting 44</p> <p>Sophora 26</p> <p>Sorbaria 38</p> <p>Sorbus 26</p> <p>Sourwood 25</p> <p>Speedwell 41</p> <p>Spiraea 33</p> <p>Sprayers 44</p> <p>Spruces 11</p> <p>Spurge, Flowering 38</p> <p>Spurge 18</p> <p>Stephanandra 35</p> <p>Stim-U-Plant 44</p> <p>Strawberries 43</p> <p>Strawberry Shrub 29</p> <p>Summer Lilac 28</p> <p>Summersweet 29</p> <p>Sunflower 25</p> <p>Sweet Gum 23</p> <p>Sweet Shrub 29</p> <p>Sweet William 38</p> <p>Symphoricarpos 34</p> <p>Syringa 34</p>	<p>T</p> <p>Tamarix 34</p> <p>Tanglefoot, Tree 45</p> <p>Taxus 13</p> <p>Thorn 22</p> <p>Thuja 14</p> <p>Filia 27</p> <p>Tobacco Stems 44</p> <p>Tobacco Dust 44</p> <p>Torchilly 40</p> <p>Traps, Ant 45</p> <p>Traps, Beetle 44</p> <p>Tree Food 44</p> <p>Tree of China 25</p> <p>Trees, Deciduous 20</p> <p>Tree Wrap 27</p> <p>Tritoma 45</p> <p>Trumpet Creeper 36</p> <p>Tsuga 15</p> <p>Tulip Tree 23</p>	<p>U</p> <p>Ulmus 27</p>	<p>V</p> <p>Veronica 41</p> <p>Viburnum 34, 35</p> <p>Vigoro 40</p> <p>Vinea (Periwinkle) 18</p> <p>Vines and Creepers 36</p> <p>Vitamin B-1 44</p> <p>Vitex 35</p>	<p>W</p> <p>Wayfaring-tree 34</p> <p>Wiegela 35</p> <p>WICKET PLANT 9</p> <p>Willow 26</p> <p>Winterberry 31</p> <p>Wintercreeper 17, 36</p> <p>Wintershrubs 7</p> <p>Wintergreen 36</p> <p>Witch-hazel 44</p> <p>Wood Ashes 44</p>	<p>Y</p> <p>Yew 13</p> <p>Yellowroot 35</p> <p>Youth and Old 33</p> <p>Age (Zinnias) 41</p>	<p>Z</p> <p>Zanthorhiza 35</p> <p>Zinnias 41</p>
--	--	--	---	--	--	---	--	---	--	--	--	---	--	--	--	--	--	---	---	--	--	---------------------------------------	--	--	--	---

From

Name

Town

State

B. F. BARR NURSERIES

Marietta Road, R. D. 1

LANCASTER, PA.



ORDER BLANK

It is mutually agreed between the customer, whose name appears below and ourselves, that no substitutes shall be made, unless by permission accompanying order, that shipments travel at the risk and cost (except prepaid offers) of the purchaser, and that this order is given and accepted under the conditions of sale in our current catalog.
B. F. BARR NURSERIES.

Name _____ Date _____

(Please prefix Mr., Mrs. or Miss and write plainly)

Street or R. D. _____

Town _____ County _____

Express or }
Frt. Office } _____ State _____

Forward by Mail.....(Customer to
Express... (check preference)
Freight... May we ship by mail,
express or freight as we
may deem best?

Encl.

O. K.'d.

Ackd.

Shipped

Via

Filled by

Please do not write in
above space

If out of variety ordered shall we substitute nearest variety of equal value? _____
or return money? _____

Please Write Botanical Names When Ordering.

Quantity	List of Plants, Bulbs, Etc.	Size	Each	Total

(Use other side if necessary)

Late in the season it is well to indicate second choice in the event first selection is sold out.

Amount of Order \$ _____ Cts. _____

Included for Parcel Post \$ _____ Cts. _____
(Minimum Charge 15c)

Total Amount Enclosed \$ _____ Cts. _____

\$

Cts.

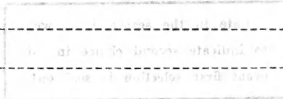
Balance over

Amount of Order

Included for Parcel Post . .
 (Minimum Charge 15c)

Total Amount Enclosed . . .

If this catalog interests you and you would like it sent to your friends who have gardens or home grounds and are interested in plants and planting please send us their names and addresses in the space below.



Special Care For Mail and Phone Orders

Will Help You Save Gasoline and Tires

GOVERNMENT CERTIFIED PLANTS FURNISHED

Barr's "Will Grow" Plants are shipped anywhere under certificates from the U. S. Government and Pennsylvania Department of Agriculture, showing them to have been thoroughly inspected and found free from insect pests and fungus diseases.

You are thus assured of receiving perfectly healthy, vigorous plants.

Parcel Post Charges

"Will Grow" Trees, Evergreens and most Shrubs are too large to mail. On other orders that can be mailed please add:

5% of the amount to cover postage (except post-paid offers), to points in Pennsylvania, New York, Connecticut, Rhode Island, New Jersey, Delaware, Maryland, Virginia and West Virginia.

10% elsewhere east of the Mississippi River.

20% to Gulf States and beyond the Mississippi.

Minimum charge where required to cover cost of mailing, 15c.

All Stock True to Name

We exercise the greatest care to have all stock genuine and true to label, holding ourselves ready to refund the purchase price or to replace any plant that proves untrue. We do not give any warranty, expressed or implied; and in case of error on our part, it is mutually agreed between the purchaser and ourselves that we shall not be held responsible at any time for a greater amount than the original price of the goods; that each plant is sold subject to prior sale, and that orders are not subject to cancellation after plants have been dug.

GUARANTEE

All plants are guaranteed to be freshly and carefully dug and to arrive in good growing condition. We insist on being notified within five days after receipt if any plant is not satisfactory, in case free replacement or other proper adjustment is expected.

It is not our guarantee on "Will Grow" plants that makes them grow, but rather we are able to make the claims we do knowing they had every cultural advantage to make them grow.

REPLACEMENTS

All stock accepted as satisfactory, properly planted and cared for, if failing to grow, dies from reasons beyond our or the customer's control. Such losses occurring the first season are shared fairly on a 50-50 basis. Hence we agree to replace once at one-half the original purchase price, where purchased at regular catalog prices and provided the customer has also shown good faith by having paid for the original plants in full. No replacements can be made where account is unpaid, nor can we replant replacements free. On the loss of a Tree 4 inches in caliper or over, dug with a ball of earth and burlapped, we go more than half way in replacement, furnishing another tree or stock of equal value free, customer only to pay delivery and planting costs. Customers should not expect Evergreens to be replaced on the one-half price basis that have been burned or otherwise injured by dogs, or suffered any accident or neglect.

B.F. Barr Nurseries

CUSTOMERS ordering by mail or telephone and allowing selection by us are assured their wants will be taken care of just as satisfactorily as if they had spent their time in making selections from the hundreds of thousands of plants in our nurseries.

We take pride in pleasing,—you always get full money's worth. Each order is individually treated. We do not carry any plants in storage. This insures freshly dug plants.

How To Remit When Ordering

Cash should accompany order. Remit by post office or express money order, registered letter or bank draft. Postage stamps accepted up to \$2.00 in small denominations only.

The right is reserved to advance prices without notice, depending on market conditions. All prices, unless otherwise stated, are F. O. B. Nurseries.

When super-specimen plants are personally selected in the nursery the price will be in accordance with the value of the specimen selected, rather than catalog list price.

Shipping Facilities and Charges

Our shipping facilities are ideal, the Lincoln Highway, the Pennsylvania Railroad and the Reading Railroad putting the nurseries in quick and easy communication with all points.

We make no charge for packing retail orders for Evergreens up to 4 feet or trees up to 1½ inches in caliper. For all sizes larger add 25c per foot for Evergreens, and 20% to catalog prices for Trees. This is to cover cost of materials and crates. Trees over 2 inches in caliper are too large to pack.

Deliveries By Truck

Free deliveries by truck within a radius of 35 miles can be arranged for when a full truck load of stock (approximately \$150 worth, large trees excepted; minimum order \$50.00) is purchased by one or more customers in a community. Beyond the free delivery zone truck deliveries may be arranged for at nominal cost.

This general catalog of Evergreens, Trees, Shrubs, etc., is issued each Spring followed in the Fall by a supplement in which we offer Bulbs and Plants for Fall planting. We would ask, therefore, that you retain this catalog for future reference, or as soon as you have finished with it that you give it to an interested friend whom it may possibly help.



NEW ADMINISTRATION BUILDING

We have removed our Office and Salesroom from their former location, 1000-1010 West Lincoln Highway, Lancaster, Pa., and established them on our 100 acre Nursery located on Marietta Pike, (State Highway Route No. 340) one mile west of Lancaster.

Here we have the entire personnel of our organization with modernly equipped Offices, Salesroom, Landscape Drafting Department, and Shipping Facilities under one roof. This will enable us to handle all orders with greater dispatch and at a saving to our customers.

We are now better equipped than ever to furnish the best in carefully grown Nursery Stock, Flowering and Foliage Plants, Dish Gardens for the home, Pottery, Garden Furniture, Insecticides, Plant Foods, Lawn Seed, etc.

May we extend to you a cordial invitation to visit us in our new quarters.

BUSINESS HOURS—Open every week-day from 8 A. M. to 5:30 P. M. While no business is transacted on Sunday, except by appointment, friends and patrons are welcome to drive or walk through the Nurseries and Gardens every day of the week. You will find excellent parking facilities.

THE CITY FLOWER SHOP—The B. F. Barr Flower Shop at 116 North Queen Street is located on the city's main street and is a department of the Nursery. The Flower Shop personnel is expert in supplying the latest styles in floral arrangements on short notice. The season's flowers are carried in stock at all times. Mail, telephone or telegraph orders will be carefully filled. Orders entrusted to us for delivery in practically any part of the United States and Canada are sure to have proper and satisfactory attention by 7920 bonded fellow-members of the F. T. D. (Florists' Telegraph Delivery Association) located at or nearest the place delivery is to be made. These florists, being bonded, guarantee co-operation and you are assured full value.

B. F. BARR NURSERIES

Leading Nursery and Florist in the Garden Spot of America

49TH YEAR

MARIETTA PIKE (R. D. 1) LANCASTER, PA.